

Introduction:

The **BW-MX1280 Portable Edge Router Grinding Machine** is designed for chamfering and profiling the edge of stone countertops.

Apply with max diameter 90mm profiling router bits. Mainly for wet use, Convenient and safe.

Features:

1. Pulley type and Water slide type are both available.
2. The speed can be adjusted according to your demands.
3. Using electricity as power, the rotation torque is stable and strong.
4. With appropriate weight, convenient to operate.

Specifications:

The followings are the normal specifications of our **Portable Edge Router Grinding Machine** :

Parameters	Numerical
Type	BW-MX1280
Size of grinding router bit	MAX : \varnothing 90 mm
Dimension	400mm * 300mm * 280mm
Rated speed	8500 R/Min
Process Thickness	1cm - 5cm
Thread type	M8, M10, M12
Rated power	2200 W
Weight	17 Kg

The above specifications are for reference, other or special specifications can be ordered by customer s.

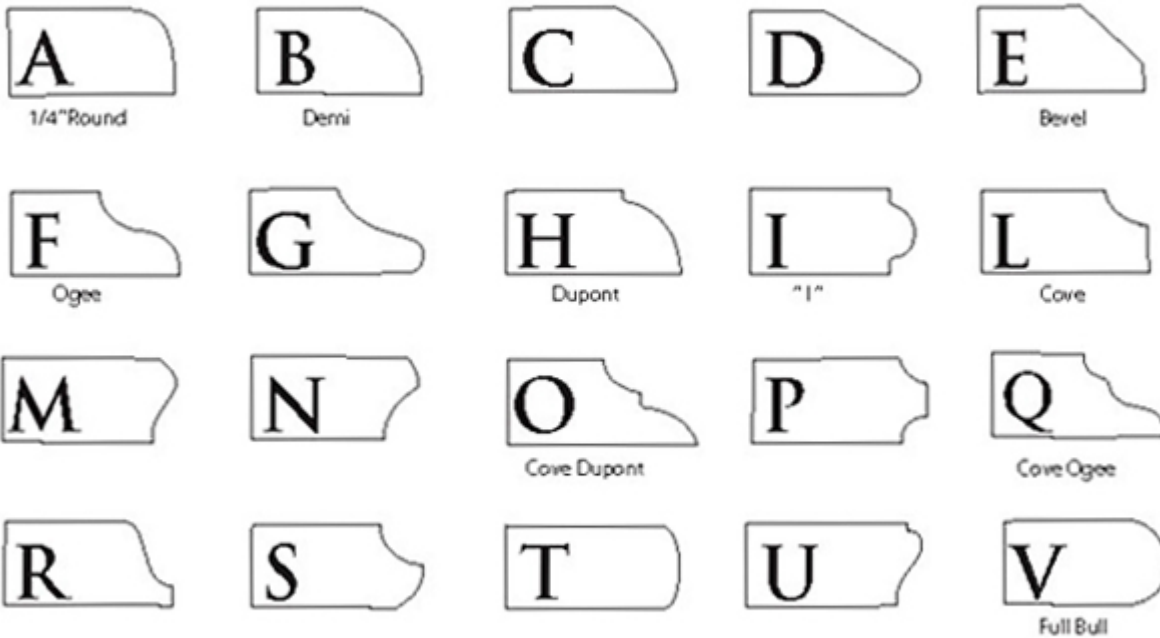
Picture:



Boreway Machinery Co., Ltd.
www.diamondtools.top
www.boreway.com

Boreway Machinery Co., Ltd.
www.diamondtools.top
www.boreway.com

Stone Shape:



Boreway Machinery Co., Ltd.
www.diamondtools.top
www.boreway.com

Note□

1. Please place the chamfering machine on a flat and stable base when profiling working .
2. For your safety, please use leakage protector.