

**Description:**

**180mm Double Segments Dimaond Cup Grinding Wheel For Hard Concrete** are mainly used for grinding surface of concrete an other materiasl.With the advantaqes of convenient use and high grinding efficiency,it is the most effective tool for fase grinding,trimming of stone and concrete.It is usually used on small handheld electric or pneumatic grinding machines,it can also be used on large grinding machines,like continuous grinding machines.

**Feature:**

- 1.High efficiency,long lifespan and good stable;
- 2.Grinding the material from coarse to fine.
- 3.Easily use.

**Specification:**

The normal specification of **180mm Double Segments Dimaond Cup Grinding Wheel For Hard Concrete** :

Diameter	Thickness	Connection	Grit	Application materials	Application machines
50mm	5mm	M10 M12 M14 20mm 22.23mm 5/8"-11 Snail lock	30# 60# 120#	Granite Marble concrete Quartz Other stone	Electric grinding machines Pneumatic grinding machines Continuous grinding machines
80mm	5mm				
100mm	5mm				
125mm	5mm				
150mm	5mm				
180mm	5mm				

The above specification just a reference for customers.Other specification can be ordered by customers.

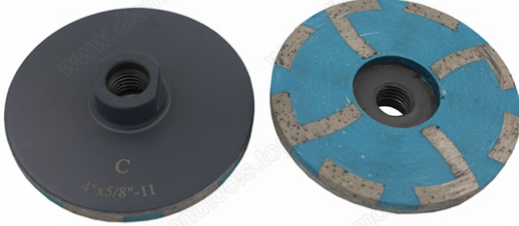
**Picture:**

**180mm Double Segments Dimaond Cup Grinding Wheel For Hard Concrete**



**Related product:**

**Coarse Resin Filled Diamond Cup Grinding Wheel D100\*5/8"-11**



Boreway Machinery Co., Ltd.  
[www.diamondtools.top](http://www.diamondtools.top)  
[www.boreway.com](http://www.boreway.com)

**Contact us:**

**Fujian Nanan Boreway Machinery CO.,Ltd.**

ADD:Shuitou Town,Quanzhou,Fujian,China

Post Code:362342

TEL:(+86)595-86990206

FAX:(+86)595-86990220

Skype:boreway02

Whatsapp:(+86)18359335376

Wechat:Sherry\_154

Email:boreway02@boreway.net