

Single Rhombus Segment Husqvarna Bar Grinding Pads Metal Bond Redi Lock Diamond Tooling Grinding For Supplies

Description:



Single Rhombus Segment Husqvarna Bar has developed a very broad range of metal-bond diamond tools to achieve maximum capacity at minimum cost and to suit most types of floor. The matching of various floors and bond is as follows.

Single Rhombus Segment Husqvarna Bar, suitable for general (concrete, stone) grinding use while mostly they are used for paint, glue, epoxy removal and floor coating, high quality and high efficiency, long lifespan.

Single Rhombus Segment Husqvarna Bar, Metal bond diamonds high grinding efficiency and low grinding force generates less heat in the grinding process. Metal bond diamonds have high strength, excellent wear resistance, and a low friction coefficient.

Single Rhombus Segment Husqvarna Bar, suitable for general (concrete, stone) grinding use while mostly they are used for paint, glue, epoxy removal and floor coating, high quality and high efficiency, long lifespan.

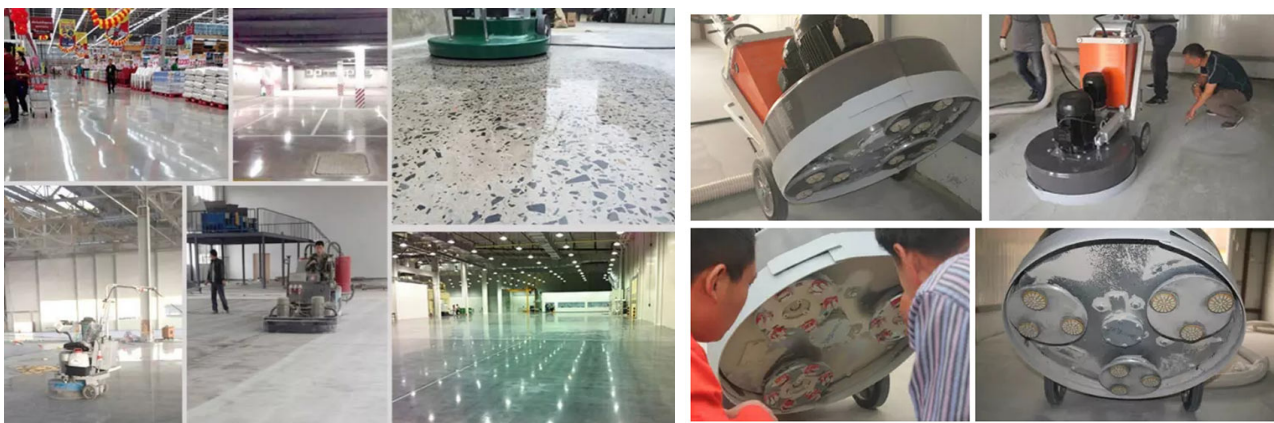
Application:

Single Rhombus Segment Husqvarna Bar is use for Husqvarna Grinder.

Connection: Redi-lock style

Grit No.: 6#, 16#, 20/25#, 30/40#, 50/60#, 70/80#, 80/100#,120/150#, 200/220#,325/400#

Metal bond diamonds high grinding efficiency and low grinding force generates less heat in the grinding process.



Single Rhombus

Segment Husqvarna Bar For Husqvarna Grinder,Other Pads Use For Husqvarna,W erkmaster, Lavina, Sti,Htc,Blastrac,Scanmaskin ,Klindex,Edco Grinders Etc.

Single Rhombus Segment Husqvarna Bar have high strength, excellent wear resistance, and a low friction coefficient.

Specification:

The normal size of **Single Rhombus Segment Husqvarna Bar**:

Product Name	Single Rhombus Segment Husqvarna Bar Grinding Pads Metal Bond Redi Lock Diamond Tooling Grinding For Supplies		
Segment Shape	Rhombus Shape	Segment Size	44*19*13mm
Place of Origin	Fujian, China	Brand	Boreway
Item No.	BW-HU-RS-01	Machine	Husqvarna Grinder
Application	Concrete Terrazzo Epoxy floors	Material	Diamond + Metal Powder Combination

Other connection and specification can be customized according to need

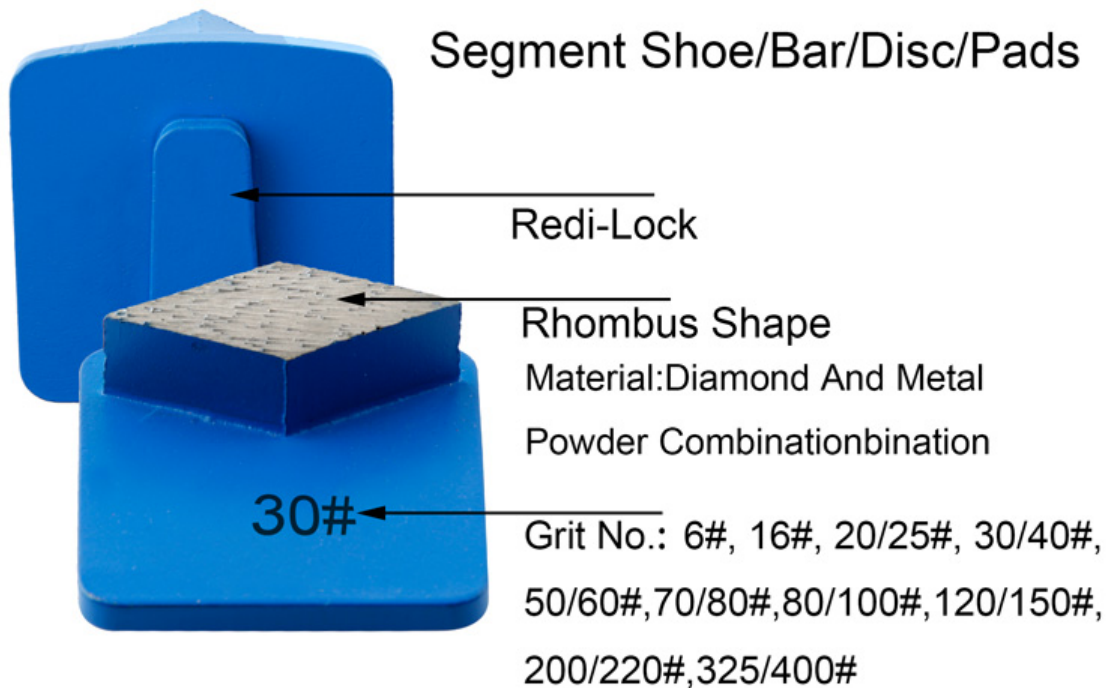
[If you need it, please continue contact with us, you can click here](#)

Feature:

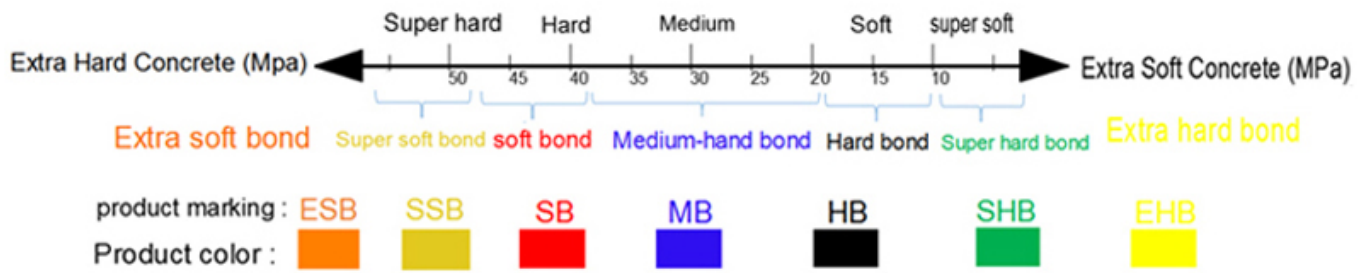
Single Rhombus Segment Husqvarna Bar

1. Can be designed into a variety of different shapes of single segment or double segments, also can be customized according to the customer's special shape and specific numbers of segments.
2. For example below can be made into a three inch and ten segments grinding disc , providing an ultra-long service life , this model is recommended for large horsepower or large grinding machine.

Metal Bond Rhombus



Bond:



Soft Bond - The metallic powder in the sintered segment wears away quickly releasing dull diamond crystals exposing new abrasive crystals to cut efficiently. Best used on hard surfaces.

Medium Bond - A metal bond strength right between that of soft and hard bonds.

Hard Bond - The bond of the metallic powder in the segment wears away slowly and prevents premature wear against soft, abrasive surfaces.

About Us:



Packing & Delivery:

PS:

- 1.Tools packing in carton cases
- 2.By Air/Sea for batch goods, Airport/Port receiving
- 3.Less than 45kg, generally delivery by express(Door to Door)
- 4.When tools are in large quantities, they are packing in wooden cases



- For sample or small orders, products could be sent by express, TNT, DHL, UPS, FedEx, EMS etc.
- For large orders, shipping by sea or air is recommended. By our long-term cooperate agent or your appointed forward.
- By sea, port of loading: Shanghai, Ningbo, Xiamen, Qingdao etc.



Our Service:

- 1.Low MOQ: It can meet your trial order need well.
- 2.OEM Accepted: We can produce according to your sample or drawings.
- 3.Good Service: We treat our clients as God with high professionalism and passion.
- 4.Good Quality: We have strict quality control system. Good reputation in the market.
- 5.Fast Delivery: We have big discount from forwarder.

Contact Us:

Fujian Nanan **boreway** Machinery Co.,Ltd.



No.605 Huahui Center, Shuitou Town 362342 Quanzhou, Fujian, China



TEL: (+86)595-86990206 /  **Fax:** (+86)595-86990220



Mobile/WhatsApp/Wechat: (+ 86) 18650679939



E-mail: boreway@boreway.com



Lyon Chang