

## Introduction:

### Diamond Tool Factory supply Diamond Bush Hammer Plate Diamond Bush Hammer Roller Tools

The bush hammer tools are used on manual grinding machines or auto/semi-auto bush hammered machines to process bush hammered litchi surface on concrete granite, marble and other stone surface. The processing surface can be very uniform and seems real and natural. The rollers can be changed conveniently, greatly reduced the production costs. Boreway bush hammer plates adopted the sophisticated welding technology and selecting high quality aluminum alloy to casting, bush hammerer's grit can be changed through the adjustment of spring elasticity on bush hammer, manual grinding machine press. Both enlarging spring's interval to reduce spring elasticity and reducing machine's press can enhance bush hammer vibration to make bush hammered face rough. Widely used on granite, marble sandstone to make rough surface.

#### Features:

1. Diameter: 125MM, 150MM, 200MM, 250MM, 300MM, 350MM, 400M, 450MM;
2. Roller quantity in per bush hammer: 3PCS, 4PCS, 5PCS, 6PCS, 9PCS and 12PCS;
3. Segment quantity in per roller: 15PCS 30PCS and 45PCS;
4. Mainly used for the stone finishing way of bush hammer finish;
5. Five to six times faster than manual times;
6. The grit of bush hammer face can be adjusted and the size of adaptor decide to its machine.

All of our products have been strictly tested before access to market.

## Specification:

The normal size of **diamond bush hammer wheel**:

| Product name      | Outer Diameter |     | Roller quantity | Segment quantity | Connection                            |
|-------------------|----------------|-----|-----------------|------------------|---------------------------------------|
|                   | Inch           | mm  |                 |                  |                                       |
| Bush hammer tools | 5              | 125 | 3               | 30               | M14<br>M16<br>5/8"-11<br>42mm<br>50mm |
|                   | 6              | 150 | 4               | 45               |                                       |
|                   |                |     | 3               | 30               |                                       |
|                   | 8              | 200 | 6               | 45               |                                       |
|                   |                |     | 4               | 30               |                                       |
|                   | 10             | 250 | 8               | 45               |                                       |
|                   |                |     | 5               | 30               |                                       |
|                   | 12             | 300 | 10              | 45               |                                       |
|                   |                |     | 6               | 30               |                                       |

**Other connection and specification can be customized according to need.**

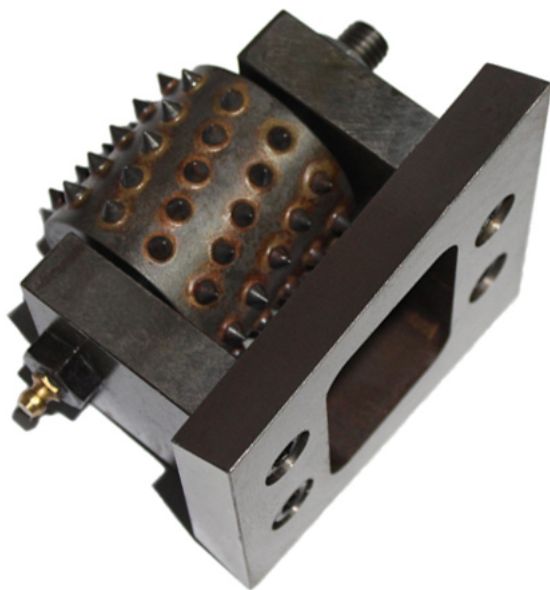
[Click Here To Browse More Items And Sizes!](#)

## Pictures:

Only parts of **Diamond bush hammer tools**,  
If you want more details of bush hammer, please contact us.

## **boneway®** Multi size bush hammer tools



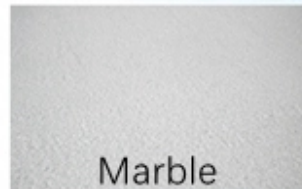




# Introduction



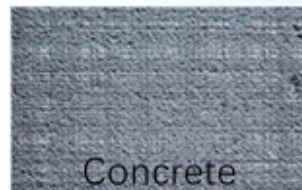
Bush hammer roller and plates are widely used on many kinds grinding machines for grinding bush hammered, such as granite, marble, concrete, limestone. We offer a wide different sizes to satisfy your exact profiling needs. We offer many different kinds of bush hammer rollers and plates for your use.



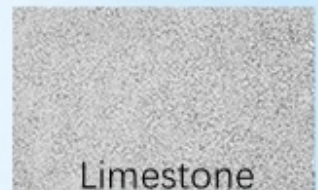
Marble



Granite



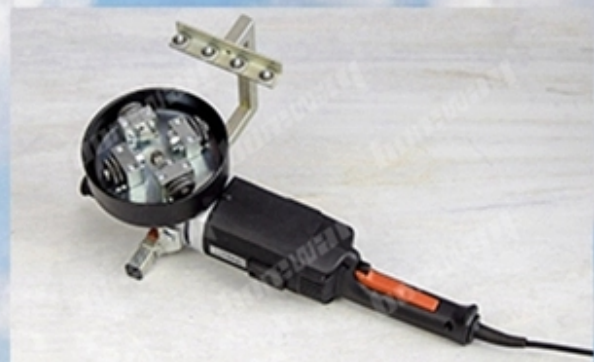
Concrete



Limestone

**boneway®**

## Applicable machines



Notice:

1. Before purchase, please provide the model of the machine.
2. Please provide the material before purchase.
3. Other specifications can be customized according to requirements.

### Packing & Delivery:

1. Tools packing in carton cases;

2.Large machines packing in wooden cases;

3.When tools are in large quantities, they are packing in wooden cases.



### Contact Us:

**Fujian Nan'an Boreway Machinery Co.,Ltd.**

**Address: Huahui Center 605, Shuitou Town, Quanzhou, Fujian, China.**

**Post Code: 362342**

**Tel.: 0086-595-86990206**

**Fax: 0086-595-86990220**

**Contact: Ally Huang**

**Mobile/WhatsApp: 0086-18650679939**

**Wechat: 0086-18650679939**

**Skype: boreway01**

**E-mail: boreway01@boreway.net**