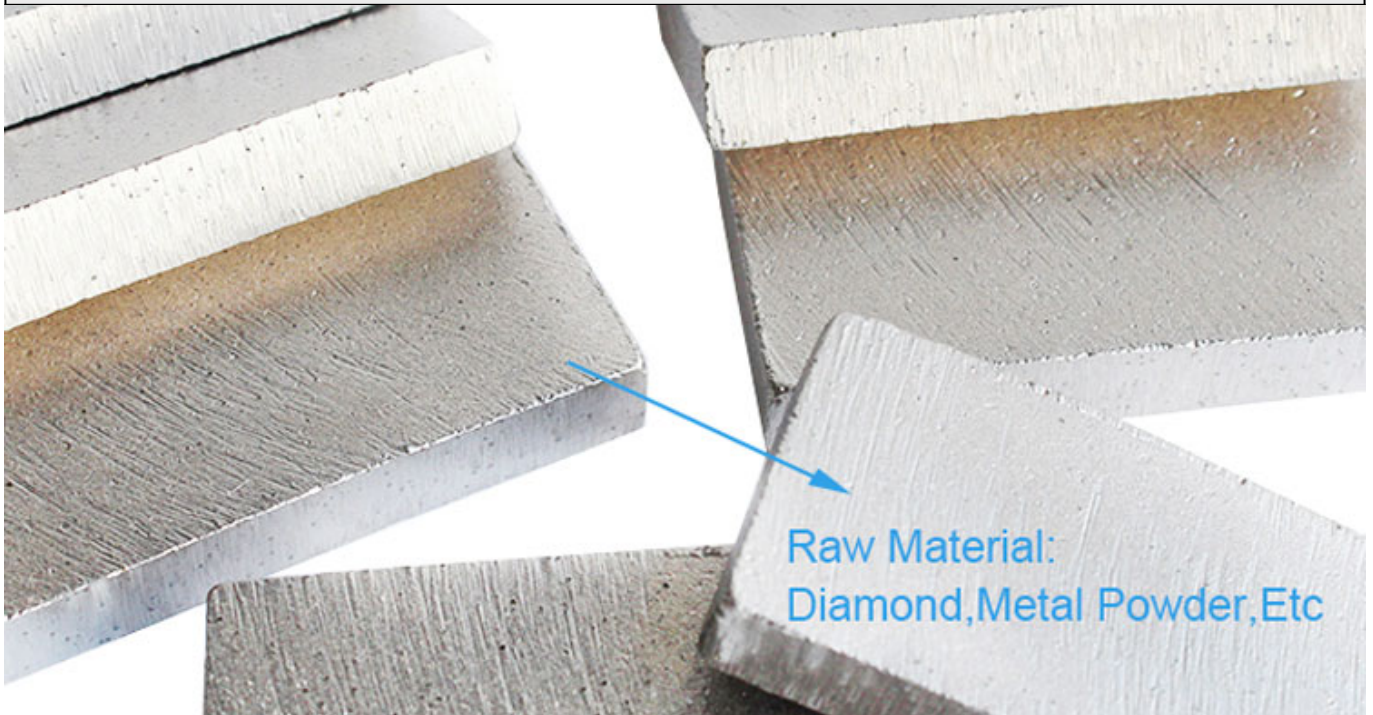


Hot Pressed Diamond Tips Cutting Segment For Marble Granite Reinforce Concrete Boreway Manufacturer

Introduction:



Hot Pressed Diamond Tips Cutting Segment, circular multi-blades cutter, Diamond gang saw, circular saw blades, Circular Turbo Blade, Dry/Wet Cutting Blade. These products are used for cutting granite, marble, asphalt, tile, concrete, fire-proof materials or for continuous polishing machine. Various specifications can be ordered by customers.

Advantage:

1. Sharp diamond tip flat granite in diamond saw blade has good sharpness, fast cutting speed and high cutting efficiency.
2. Good wear resistance, long service life and high comprehensive cost performance.
3. **Hot Pressed Diamond Tips Cutting Segment** are Fast cutting, small cutting seam, the cut stone surface is flat and even in size.
4. By changing single grinding into the combination of grinding and cutting, the sawing performance is optimized.

Specification:

The following are normal specifications **Hot Pressed Diamond Tips Cutting Segment**:

| Diameter | | Thickness | Teeth | Segment Size | | | Hole | Max. RPM | Cutting Stone |
|----------|------|-----------|---------|--------------|----------|-------|---------|----------|---------------|
| Inch | mm | mm | pcs/set | L | W | H | mm | RPM | # |
| 10" | 250 | 18(2.2) | 18 | 40 | 3.2 | 8/10 | 50/60 | 3850 | Marble |
| 12" | 300 | 1.8(2.2) | 22 | 40 | 3.2 | 10/12 | 50/60 | 3150 | Marble |
| 14" | 350 | 2.2(2.4) | 25 | 40 | 3.2 | 10/12 | 50/60 | 2750 | Marble |
| 16" | 400 | 2.6(2.8) | 29 | 40 | 3.6 | 10/12 | 50/60 | 2400 | Marble |
| 18" | 450 | 2.8(3.0) | 32 | 40 | 4.0(4.2) | 10/12 | 50/60 | 2150 | Marble |
| 20" | 500 | 2.8(3.0) | 36 | 40 | 4.0(4.2) | 10/12 | 50/60 | 1900 | Marble |
| 24" | 600 | 3.6(3.2) | 42 | 40 | 4.6(4.8) | 10/12 | 50/60 | 1600 | Marble |
| 32" | 800 | 4.2(4.5) | 57 | 40 | 5.5(6.0) | 10/12 | 50/60 | 1200 | Marble |
| 36" | 900 | 5.0(5.5) | 64 | 40 | 7.5(8.0) | 10/12 | 60/80 | 1050 | Marble |
| 36" | 900 | 5.0(5.5) | 64 | 24 | 7.5(8.0) | 10/13 | 60/80 | 1050 | Marble |
| 40" | 1000 | 5.0(5.5) | 70 | 24 | 7.5(8.0) | 10/13 | 80/100 | 950 | Marble |
| 48" | 1200 | 5.5(6.0) | 80 | 24 | 7.5(8.0) | 10/13 | 80/100 | 950 | Marble |
| 56" | 1400 | 6.0(6.5) | 92 | 24 | 8.5(9.2) | 10/13 | 80/100 | 700 | Marble |
| 64" | 1600 | 6.5(7.2) | 108 | 24 | 9.2(9.5) | 10/13 | 80/100 | 600 | Marble |
| 72" | 1800 | 7.2(8.0) | 120 | 24 | 10.0 | 10/13 | 80/100 | 550 | Marble |
| 80" | 2000 | 8.0(9.0) | 128 | 24 | 11.0 | 10/13 | 100/120 | 500 | Marble |
| 86" | 2200 | 8.0(9.0) | 132 | 24 | 11.0 | 10/13 | 100/120 | 450 | Marble |
| 100" | 2500 | 9.0(10.0) | 140 | 24 | 12.5 | 13/15 | 100/120 | 400 | Marble |
| 120" | 3000 | 9.0(10.0) | 160 | 24 | 12.5 | 13/15 | 100/120 | 350 | Marble |
| 140" | 3500 | 9.0(10.0) | 180 | 24 | 13.0 | 13/15 | 100/120 | 300 | Marble |

Factory=Quality Control=Competitive Price=Own technology=OEM

PS:A certain amount of cooling water should be added when cutting the cutter head, and the spray water flow should be large, so that it has a better cooling effect!

Multi-blade and single-disc saw blade specifications:

| Blade Set | Blade Diameter | Thickness | Segment Size | Cutting Stone |
|-------------|----------------|-----------|---------------------|---------------|
| # | # | mm | LxWxH | # |
| Multi Size | 2200-600 Multi | 4.5 | 24x6.4/5.6x13H(15H) | Granite |
| Multi Size | 2200-600 Multi | 5.0 | 24x7.0/6.2x13H(15H) | Granite |
| Multi Size | 2200-600 Multi | 5.5 | 24x7.4/6.6x13H(15H) | Granite |
| Multi Size | 2200-600 Multi | 6.5 | 24x8.4/7.6x13H(15H) | Granite |
| Multi Size | 2500-800 Multi | 5.5 | 24x7.4/6.6x13H(15H) | Granite |
| Multi Size | 2500-800 Multi | 6.5 | 24x8.4/7.6x13H(15H) | Granite |
| Multi Size | 2500-800 Multi | 7.2 | 24x9.2/8.4x13H(15H) | Granite |
| Multi Size | 1600-960 Multi | 6.5 | 24x8.4/7.6x13H(15H) | Granite |
| Multi Size | 1600-960 Multi | 7.2 | 24x9.2/8.4x13H(15H) | Granite |
| Single Size | 40"/1000mm | 4.5-5.0 | 24x7.0/6.2x13H(15H) | Granite |
| Single Size | 48"/1200mm | 5.0-5.5 | 24x7.5/6.5x13H(15H) | Granite |
| Single Size | 64"/1600mm | 6.5-7.2 | 24x9.2/8.4x13H(15H) | Granite |
| Single Size | 48"/1200mm | 4.0 | 24x5.5x8H(10H) | Marble |
| Single Size | 48"/1200mm | 4.5 | 24x6.0x8H(10H) | Marble |
| Single Size | 48"/1200mm | 5.0 | 24x7.5x8H(10H) | Marble |
| Single Size | 48"/1200mm | 5.5 | 24x8.0x8H(10H) | Marble |
| Single Size | 64"/1600mm | 6.5-7.2 | 24x9.2x10H(8H) | Marble |
| Single Size | 64"/1600mm | 6.5-7.2 | 24x9.5x13H(10H) | Marble |

Support Sample Processing Customization

Style and Specifications



Contact Salesman

Due to the large number of product specifications and styles, in order to avoid conflicts, please contact the salesman before placing the order.

1

Provide Samples

The manufacturer supports the sample processing and customization, and the buyer provides the sample first to communicate the production requirements.



2



Mail Samples

According to the buyer's demand for proofing, the manufacturer needs the buyer to pay the proofing fee first, and the sample fee will be returned after the order is concluded.

3

Generate Order

The buyer receives the sample. If satisfied, place an order for batch production. After confirming the receipt, contact the salesman to return the proofing cost.

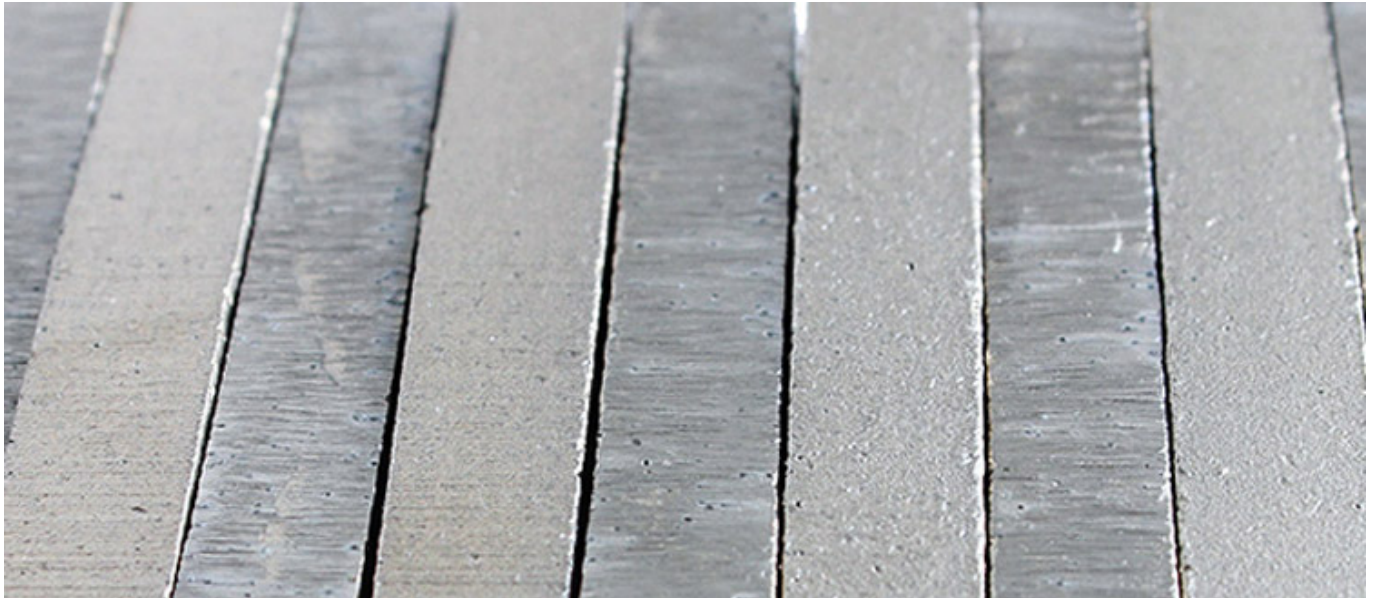


4

In addition, the speed of the combined saw blade is required to be 280-320 rpm, and the trolley can not be transported too fast!

Product Details:

Hot Pressed Diamond Tips Cutting Segment



Our factory use original high grade diamond



pk

Other factory mix second diamond selected from waste segment

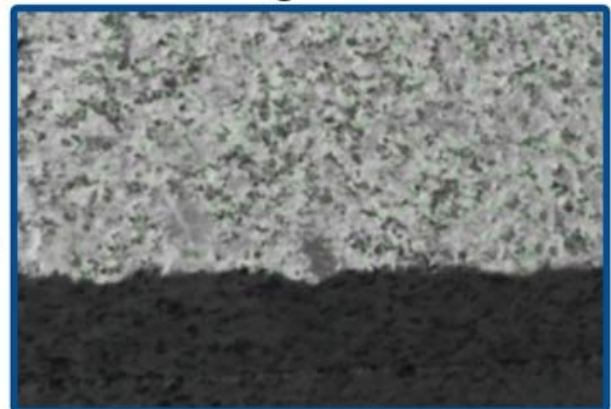


Our blade cutting effect



pk

Other supplier blade cutting effect



Example :

Stone is soft and abrasive therefore we would use a hard bonded blade. Reinforced concrete with river pebble aggregate is hard therefore we would use a soft bonded blade.

Hard Bond

Means that the compilation of metals when sintered together forms a segment of approximately 105 to 120 HRB (hardness) and is very resistant to the soft abrasive materials being sawn, thus releasing diamond at the appropriate rate.

Hard bonds typically consist of the following metal powders – cobalt, iron, tungsten carbide and are grey to dark grey in colour.

Soft Bond

Means that the compilation of metals when sintered together forms a segment of approximately 90 to 105 HRB (hardness) and allows the segment to wear quicker thus retaining diamond on the cutting surface.

Soft bonds typically consist of the following metal powders - copper, bronze and cobalt, and are generally bronze to light silver in colour.

Applications:

Hot Pressed Diamond Tips Cutting Segment using in block cutting for 900-3500mm circular saw blades for block cutting

Diamond segment cutting granite, sandstone, various hard stone with quartz.



diamond saw blade only wet use

Applications machine:

Hot Pressed Diamond Tips Cutting Segment used for single or multi circular saw blade from 900mm to 3500mm, cutting of granite, sandstone.



Cutting effect:



Applications machine:

Welding method:

Hot Pressed Diamond Tips Cutting Segment silver welding by high frequency welding machine



Brazing Machine Welding Rack

+



Three Phase 380V 30kW High Frequency Induction Welding Machine

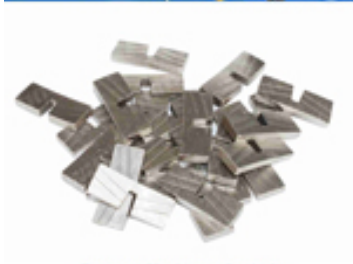


Welding segment effect

High frequency silver welded machine is recommended instead of welding by fire.

Don't weld diamond segment for a long time, just a few minutes, otherwise the diamond inside might be damaged because of the high temperature, which will affect the cutting performance of the granite segment greatly.

Related Products:



Boreway Machinery Co., Ltd
www.diamondtools.top
www.boreway.net

[300 to 800mm U Groove Shape Segments](#)



Boreway Machinery Co., Ltd
www.diamondtools.top
www.boreway.net

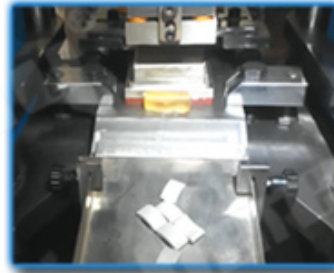
[Multiple Purposes Diamond Tools](#)

About us:

Hot Pressed Diamond Tips Cutting Segment



● Cold Press Mschine



● Fill The Mold



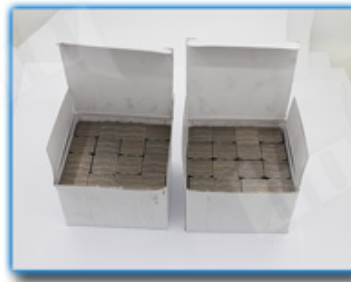
● The Product Polishing



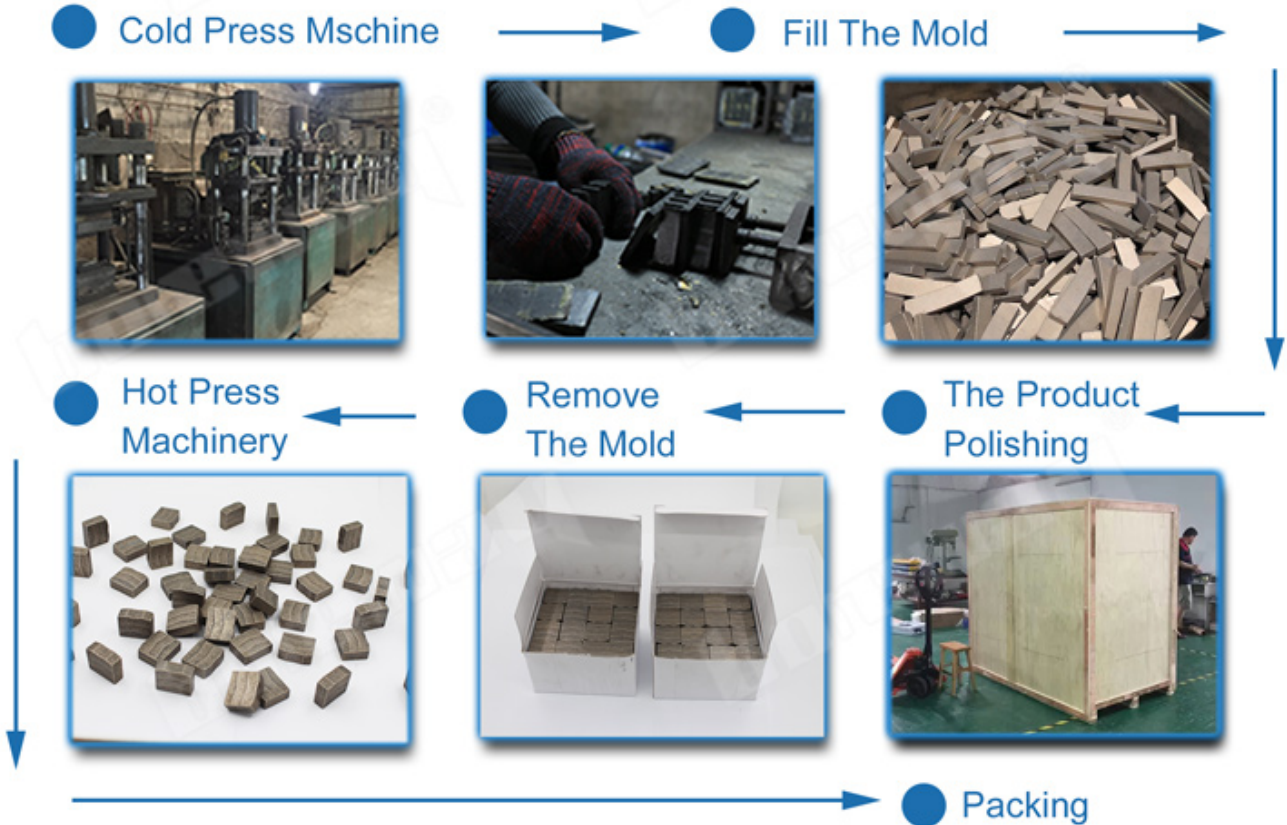
● Remove The Mold

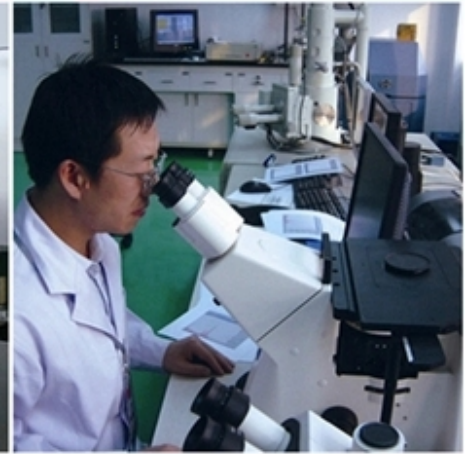


● Hot Press Machinery



● Packing







Packing □ Delivery:

PS:

- 1.Tools packing in carton cases
- 2.By Air/Sea for batch goods, Airport/Port receiving
- 3.Less than 45kg, generally delivery by express(Door to Door)□
- 4.When tools are in large quantities, they are packing in wooden cases



Our service:

1. Low order quantity: It can meet the test order you need.
2. Fast delivery: We get great discounts from freight forwarders.
3. OEM Acceptable: We can produce according to your samples or drawings.
4. Good quality: We have a strict quality control system. Has a good reputation in the market.
5. Good service: We regard our customers as God with a high degree of professionalism and enthusiasm.

FAQ:

1. If we want to order your product, how do we know your quality?

You can test with a small order, and then you will know the quality. Nowadays, many people in the world use Chinese products because of their high quality and high cost performance. We are a professional diamond tool manufacturer with more than 8 years of manufacturing experience.

2. Can you provide samples for free?

We do not provide free samples. Based on years of experience, we believe that customers will want them because of their reliable quality. By purchasing samples, we will cherish and appreciate them and make them get more. We are ready to offer our potential customers a special discount on samples. It's very important that you give us feedback, and we will

appreciate it.

3. Does your company accept customization?

Of course, we accept customization. Including different colors, cutting objects, etc. We can also tag your own label and company brand. If you want us to make any new products for you, just send your products to us. Whether it's drawings or samples, we have the ability to produce the same products. We will not sell these products to others, only customers can get permission.

Please note:

Please use high frequency Silver Welded machine instead of Fire to make the brazing, the welding time is only a few seconds, otherwise the diamond inside the segments will probably be damaged by the high temperature, then the cutting performance will be Reduced!

Contact us:

Fujian Nanan **boreway** Machinery Co.,Ltd.



No.605 Huahui Center, Shuitou Town 362342 Quanzhou, Fujian, China



TEL: (+86)595-86990206 /  **Fax:** (+86)595-86990220



Mobile/WhatsApp/Wechat: (+ 86) 18650679939



E-mail: boreway@boreway.com



Lyon Chang