

## 1200mm Diamond Saw Blade Segment For Cutting Marble Block

### Product Description

**Diamond saw blade segment for marble**,are the most important part of circular saw blades.

This 24X6x8mm blade is suitable for 1200mm circular saw blades. It is very suitable for cutting marble and other soft stones.

The saw blade segment length is 24mm, the width is 6mm, and the height is 8mm. it can also be 10mm.

The exposed diamond particles of the cutter head are the most important part of the cutter head. The main cutting stone is determined by the diamond particles.

Diamond saw blade for marble slab block cutting.The diamond particles are very sharp and can cut flat stone slabs quickly, extending the service life of the cutter head and reducing the replacement cost.

900-3500mm Diameter stone cutting segment wholesale is suitable for cutting stone blocks, and 250-900mm diameter diamond saw blade is suitable for cutting large stone plates.

### Feature:

- 1.Type: Marble Segment.
2. Segment Size: 24X6x8mm.
3. High sharpness and long lifespan.
4. Sharp cut and smooth for cutting marble and other soft stones.
5. [\*\*Diamond Segments For Cutting Marble\*\*](#),is made of high-grade diamond particles and metal powder.

### Product Specification:

The Following Are Normal Specifications **Diamond Saw Blade Segment For Marble** :

Blade Diameter	Segment Size (LxWxH)	Steel Saw Blade Thickness	Cutting Material	Machine
----------------	----------------------	---------------------------	------------------	---------

1200mm (48 Inch)	24X6X8mm	4.5mm	Marble,limestone, and other soft stone	Single Arm Machine, Bridge Cutting Machine
---------------------	----------	-------	---	---

The above specifications is only for reference, other specifications may be available as per customer's demand.

#### Other Specifications Of Cutter Segment:

Diameter		Thickness	Teeth	Segment Size			Hole	Max. RPM	Cutting Stone
Inch	mm	mm	pcs/set	L	W	H	mm	RPM	#
10"	250	1.8(2.2)	17	40	3.2	8/10/12	50/60	3450	Granite
12"	300	1.8(2.2)	21	40	3.2	12/15/20	50/60	2850	Granite
14"	350	2.2(2.4)	24	40	3.2	12/15/20	50/60	2450	Granite
16"	400	2.6(2.8)	28	40	3.6	12/15/20	50/60	2150	Granite
18"	450	2.8(3.0)	32	40	4.2	12/15/20	50/60	1900	Granite
20"	500	2.8(3.0)	36	40	4.2	12/15/20	50/60	1750	Granite
24"	600	3.6(3.2)	42	40	4.6	12/15/20	50/60	1450	Granite
32"	800	4.2(4.5)	57	40	5.5	12/15/20	50/60	1150	Granite
36"	900	5.0(5.5)	64	40	6.5	12/15/20	60/80	950	Granite
36"	900	5.0(5.5)	64	24	7.0/6.2	13/15/20	60/80	950	Granite
40"	1000	5.0(5.5)	70	24	7.0/6.2	13/15/20	80/100	850	Granite
48"	1200	5.5(6.0)	80	24	7.4/6.6	13/15/20	80/100	750	Granite
56"	1400	6.0(6.5)	92	24	8.4/7.6	13/15/20	80/100	600	Granite
64"	1600	6.5(7.2)	108	24	9.2/8.4	13/15/20	80/100	550	Granite
72"	1800	7.2(8.0)	120	24	10.0/9.2	13/15/20	80/100	500	Granite
80"	2000	8.0(9.0)	128	24	11.0/10.0	15/20	100/120	450	Granite
86"	2200	8.0(9.0)	132	24	11.0/10.0	15/20	100/120	400	Granite
100"	2500	9.0(10.0)	140	24	12.0/11.0	15/20	100/120	350	Granite
120"	3000	9.0(10.0)	160	24	12.5/11.5	20/30	100/120	300	Granite
140"	3500	9.0(10.0)	180	24	13.0/12.0	20/30	100/120	250	Granite

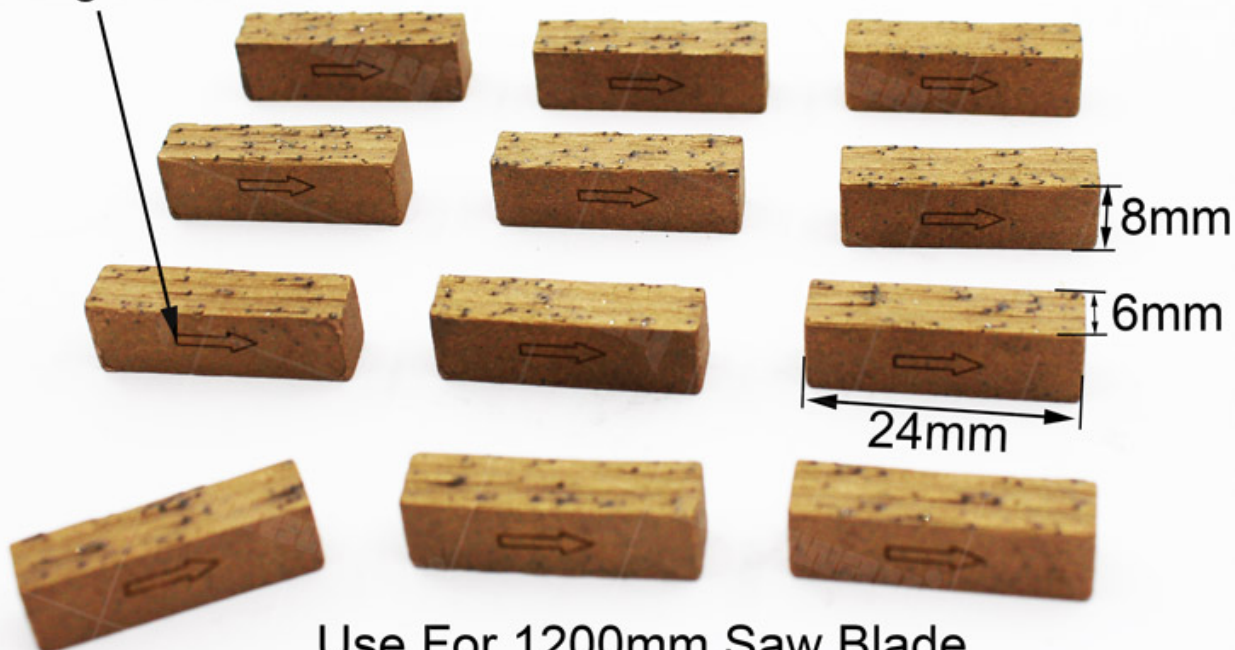
#### Multi-Blade And Single-Disc Saw Blade Specifications:

Blade Set	Blade Diameter	Thickness	Segment Size	Cutting Stone
#	#	mm	LxWxH	#
Single Size	48"/1200mm	4.0	24x5.5x8H(10H)	Marble
Single Size	48"/1200mm	4.5	24x6.0x8H(10H)	Marble
Single Size	48"/1200mm	5.0	24x7.5x8H(10H)	Marble
Single Size	48"/1200mm	5.5	24x8.0x8H(10H)	Marble
Single Size	64"/1600mm	6.5-7.2	24x9.2x10H(8H)	Marble
Single Size	64"/1600mm	6.5-7.2	24x9.5x13H(10H)	Marble
Single Size	40"/1000mm	4.5-5.0	24x7.0/6.2x13H(15H)	Granite
Single Size	48"/1200mm	5.0-5.5	24x7.5/6.5x13H(15H)	Granite
Single Size	64"/1600mm	6.5-7.2	24x9.2/8.4x13H(15H)	Granite
Multi Size	2200-600 Multi	4.5	24x6.4/5.6x13H(15H)	Granite
Multi Size	2200-600 Multi	5.0	24x7.0/6.2x13H(15H)	Granite
Multi Size	2200-600 Multi	5.5	24x7.4/6.6x13H(15H)	Granite
Multi Size	2200-600 Multi	6.5	24x8.4/7.6x13H(15H)	Granite
Multi Size	2500-800 Multi	5.5	24x7.4/6.6x13H(15H)	Granite
Multi Size	2500-800 Multi	6.5	24x8.4/7.6x13H(15H)	Granite
Multi Size	2500-800 Multi	7.2	24x9.2/8.4x13H(15H)	Granite
Multi Size	1600-960 Multi	6.5	24x8.4/7.6x13H(15H)	Granite
Multi Size	1600-960 Multi	7.2	24x9.2/8.4x13H(15H)	Granite

[Product show](#)

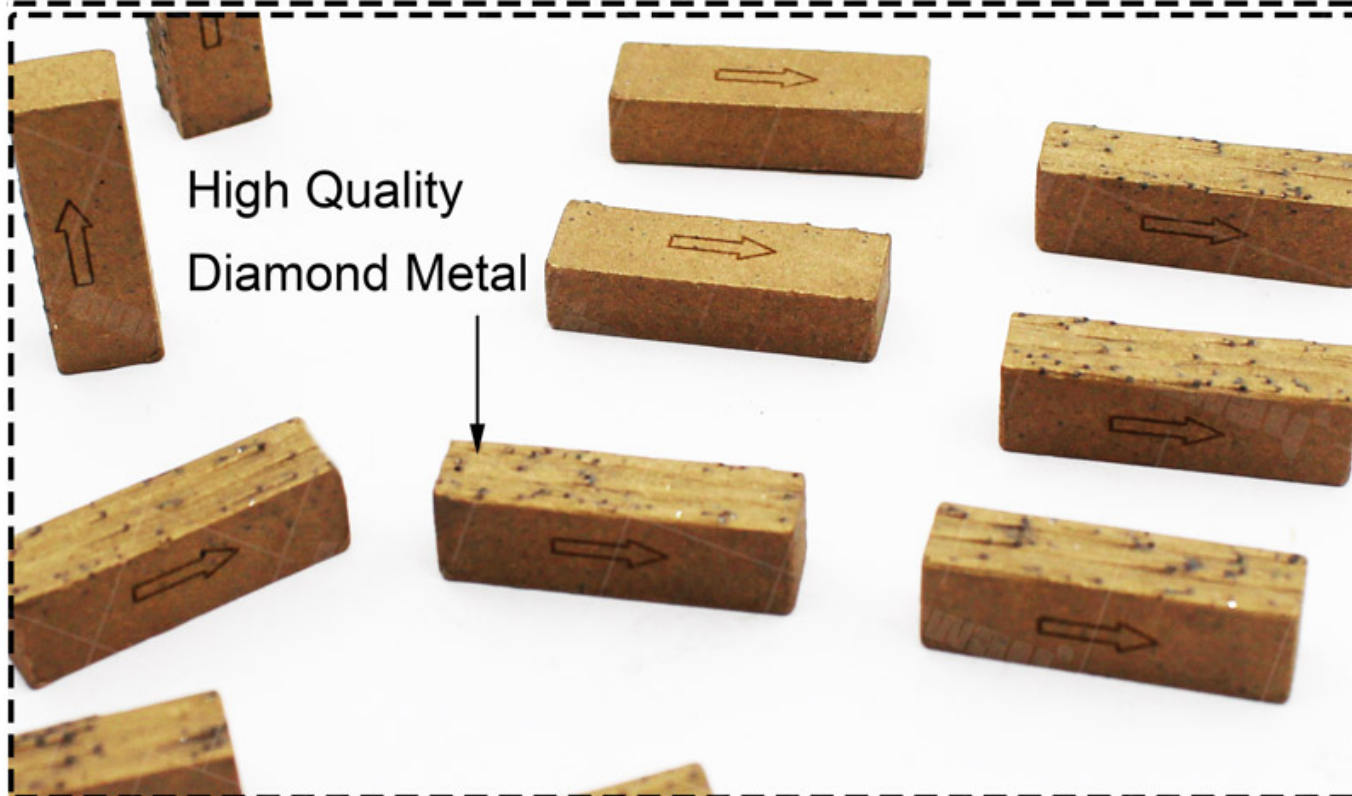
## 1200mm Diamond Saw Blade Segment For Cutting Marble Block

Cutting Direction

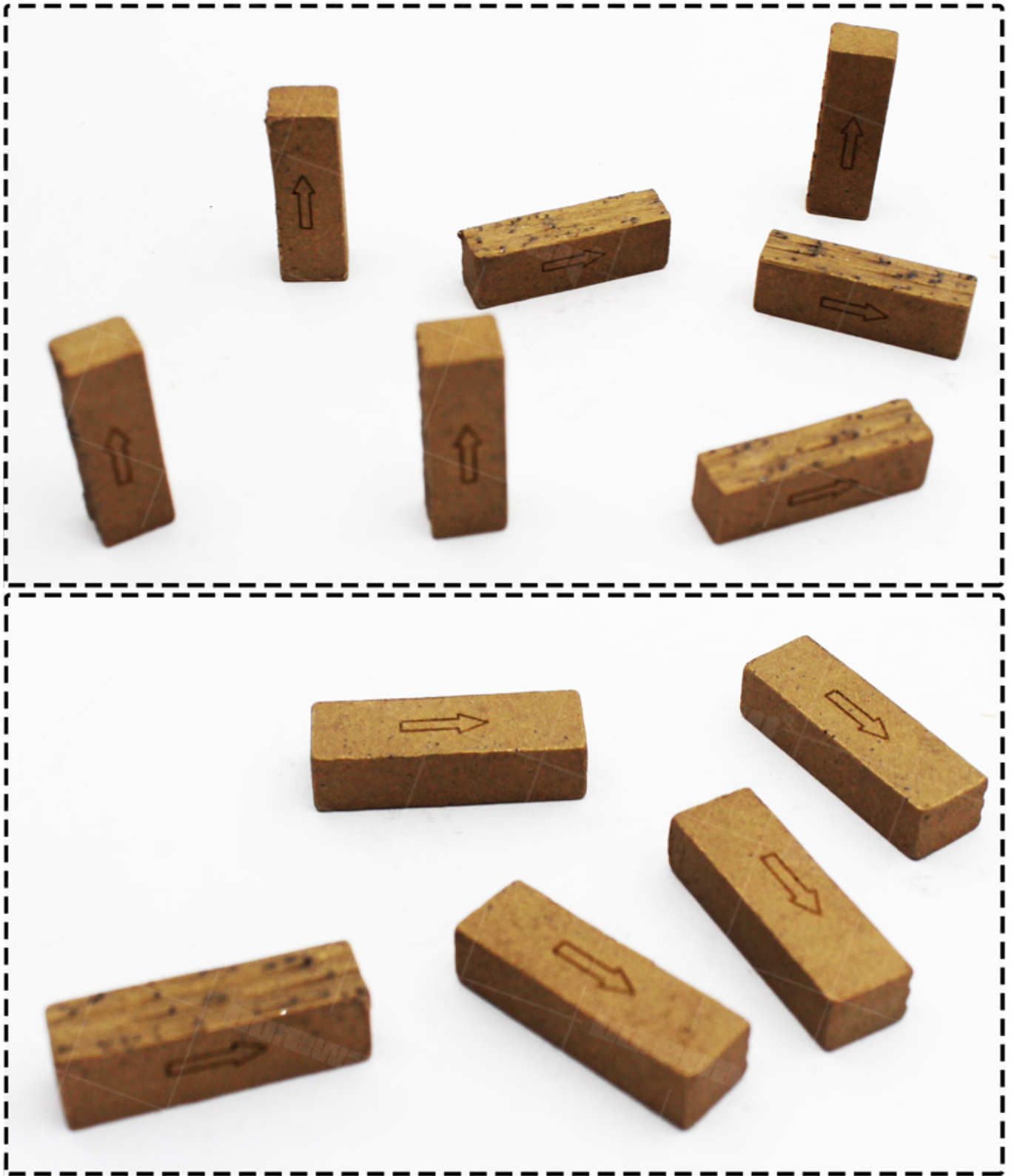


Use For 1200mm Saw Blade

High Quality  
Diamond Metal







#### **Application:**

Diamond segment cutting supplier china for marble, limestone and other soft stone

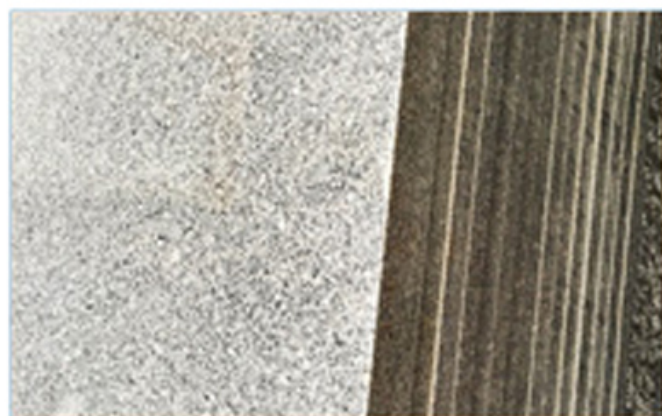
[\*\*Diamond Segment Cutting Supplier China\*\*](#), for single arm machine, bridge cutting machine.

Segments Type: grooved type, K type, V type, taper type, sandwich..Our diamond segments

for large circular saw blades are always manufactured in sandwich design.

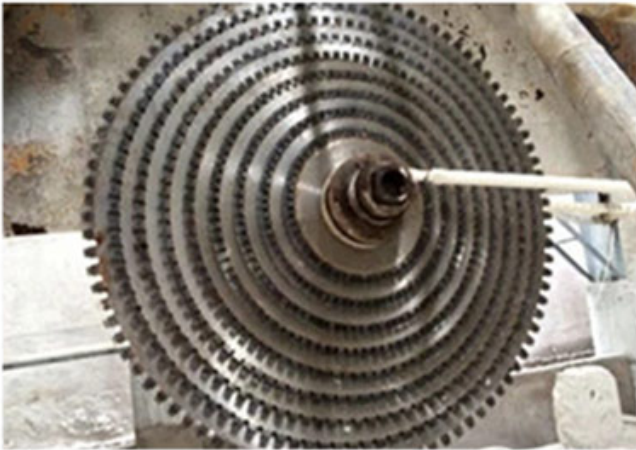
Diamond distribution in the outer and inner layers is carefully designed to ensure a wear shape which helps to stabilize the cut, comparable with the effect of skating.



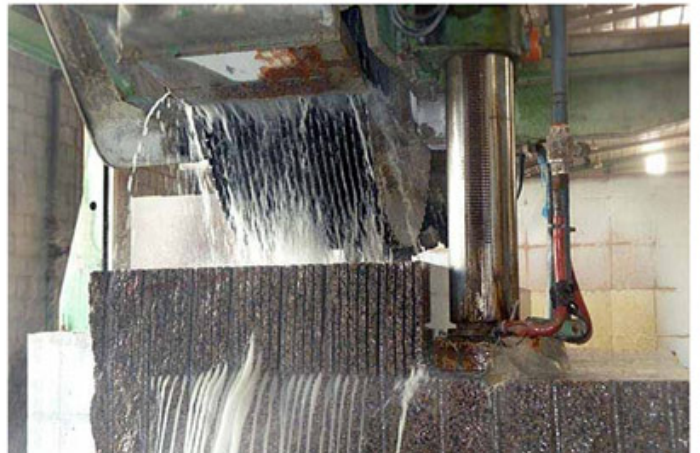




Tower Saw Blade



Multi Saw Blade



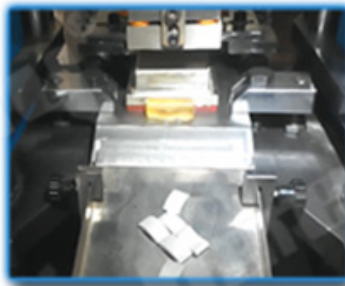
Single Saw Blade







● Cold Press Mschine



● Fill The Mold



● The Product Polishing



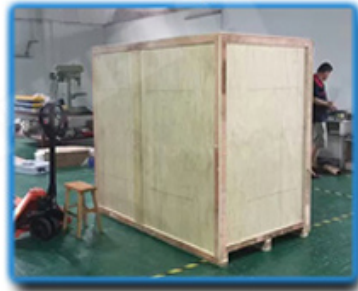
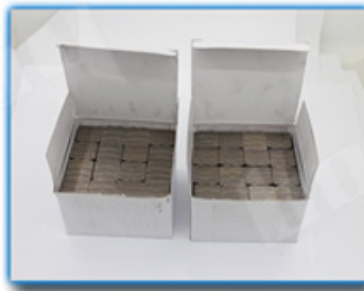
● Hot Press Machinery



● Remove The Mold



● Packing



## FAQ

### 1. Do you offer free samples?

Normally we do not offer free samples, but we guaranty our product's quality.

### 2. How can we be your agent in our country?

Please inform us your detailed company, we will discuss and propose helpful suggestion for you, and to find the best solution for you.

### 3. Is there cheap shipping cost to import to our country?

For small order, Express will be the best, And for bulk order, sea ship way is best but take longer time. For urgent orders, we suggest via air to airport or by Express send to your door.



## Contact Us:

Fujian Nanan **boreway** Machinery Co.,Ltd.



No.605 Huahui Center, Shuitou Town 362342 Quanzhou, Fujian, China



**TEL:** (+86)595-86990206 /



**Fax:** (+86)595-86990220



**Mobile/WhatsApp/Wechat:** (+ 86) 18650679939



**E-mail:** [boreway@boreway.com](mailto:boreway@boreway.com)



**Lyon Chang**