

Introduction:

1. Diamond CNC finger bit for edge grinding are designed for rough grinding and shaping ,for granite marble stone tile;
2. The size of CNC Finger Bit is D20X30, includes 4 piece, the grit are Pos.1, Pos.2, Pos.3, Pos.4;
3. Usually mounted on CNC or Radial Arm machines, for hole grinding, anchor and blind hole;
4. The shaft size is 1/2" gas;
5. Milling tool for wet cutting.

Feature:

1. Faster Speed and Lasting longer
2. Less Noise and Low Ampere
3. Designed for rough grinding and shaping
4. For granite marble stone tile and more
5. Milling tool for wet cutting

Specification:

The following are the normal specification of Diamond CNC Finger Bit D20x30x1/2 Gas Thread:

Diameter	Segment Length	Bore(mm)	Segment No.	Machine
20mm	41mm	1/2" gas	6	CNC or Radial Arm machines

The above specifications are for reference, other specifications can be ordered by customers.

Images:

Diamond CNC Finger Bit D20x30x1/2 Gas Thread For Edge Grinding Granite Marble

boreway®

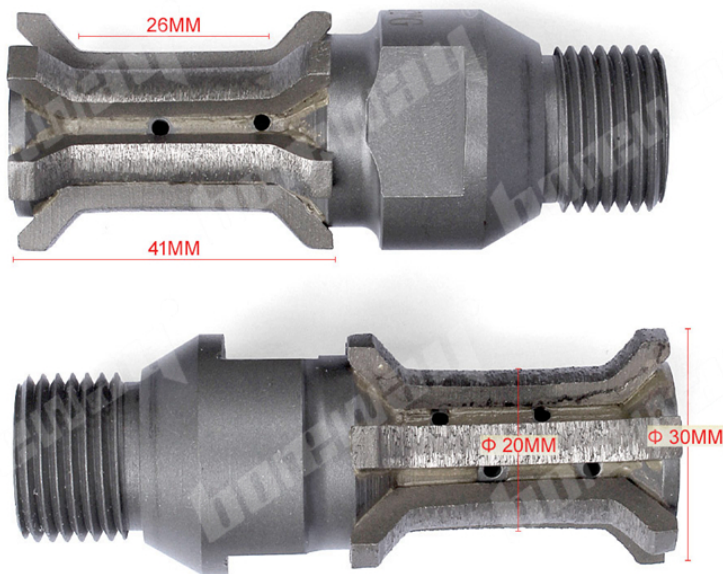


Boreway Machinery Co., Ltd.
www.diamondtools.top
www.boreway.com

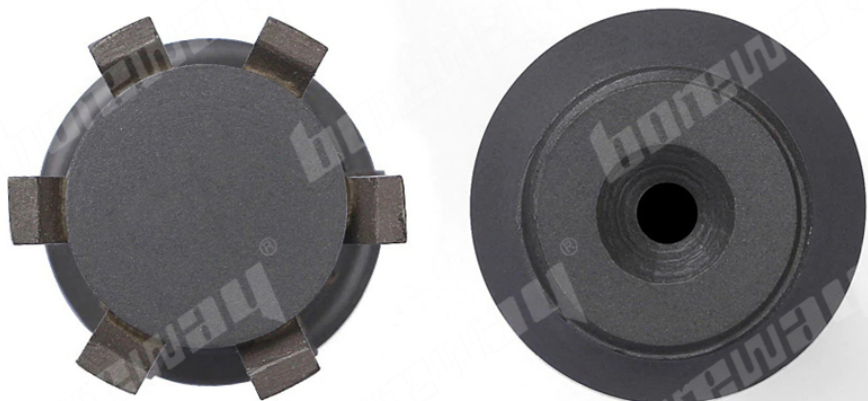
boreway®



Boreway Machinery Co., Ltd.
www.diamondtools.top
www.boreway.com



Boreway Machinery Co., Ltd.
www.diamondtools.top
www.boreway.com



Boreway Machinery Co., Ltd.
www.diamondtools.top
www.boreway.com

If you are want to know more about the finger bit,please click here [DIAMOND FINGER BIT](#) to visit.

Contact us:

Fujian Nanan Boreway Machinery Co.,Ltd.

Address: Shuitou Town,Quanzhou, Fujian, China

Post Code: 362342

TEL: (+86)595-86990206

FAX: (+86)595-86990220

WhatsApp:+86-18650679939

Email:borewa01@boreway.net