

Introduction:**D50*35T*5/8"-11 Diamond Coarse Zero Tolerance**

Wheel are for grinding and polishing sink holes on the slab,

Kitchens etc., which is the most effective way to grind and polish the tight radius.

Be designed for stock removal on granite marble by grinding away excess stone.

It is the fastest way to remove material after cutting out sink holes.

They are used for very aggressive grinding applications and removal of stock on variety materials including granite, concrete, limestone, marble, block, terazzo and more.

Features:

1. High efficiency, long lifespan and fast milling speed.
2. Perfect balance with zero vibration and stable performance.
3. Smoother milling without stone edge damage.

Specifications:

The followings are the normal specifications of our **D50*35T*5/8"-11 Diamond Coarse Zero Tolerance**

Wheel :

Code No.	Diameter	Grit No.	Working Method	Segment Length	Connection
BW-ZTW-M01-01	25mm(1")	Rough	Wet or Dry		M14
BW-ZTW-M01-02	50mm(2")	Medium		35mm	5/8"-11
BW-ZTW-M01-03	75mm(3")	Hard		45mm	1/2"G
BW-ZTW-M01-04	100mm(4")				

The above specifications are for reference, other specifications can be ordered by customers.

Picture:**D50*35T*5/8"-11 Diamond Coarse Zero Tolerance Wheel**

boreway®

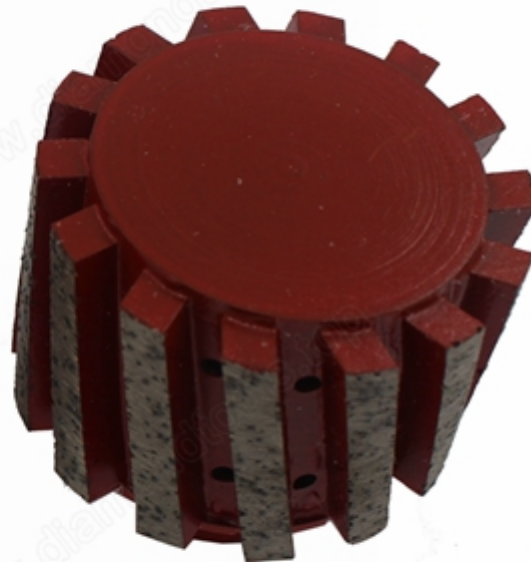


Boreway Machinery Co., Ltd.
www.diamondtools.top
www.boreway.com

Related product:

D50*35T*M14 Segmented Diamond Abrasive Grinding Wheel For Sink

boreway®



Boreway Machinery Co., Ltd.
www.diamondtools.top
www.boreway.com

boreway®



Boreway Machinery Co., Ltd.
www.diamondtools.top
www.boreway.com

Contact us:

Fujian Nanan Boreway Machinery CO.,Ltd.

ADD:Shuitou Town,Quanzhou,Fujian,China

Post Code:362342

TEL:(+86)595-86990206

FAX:(+86)595-86990220

Skype:boreway02

Whatsapp:(+86)18359335376

Wechat:Sherry_154

Email:boreway02@boreway.net