

Boreway 1800mm M shape Diamond Segment for Cutting Stone

Advantage:

- 1) **1800mm m shape diamond segment** change the single grinding for cutting grinding and the blade, the combination of optimization of the cutting performance.
- 2) Good sharp degree of the cutting tools, cutting speed, cutting efficiency is high.
- 3) Good wear-resisting coefficient, long service life, high performance/price ratio, and integrated.
- 4) Fast cutting, cutting, stitching cut out of stone material surface smooth, uniform size.

Feature:

- 1) **1800mm m shape diamond segment** diamond sheet feed and (Ti + Cr + Ni + Co, etc.) to form chemical bonds, can reduce the threshing, improve the edge, extend the service life.
- 2) A large number of exported to eastern Europe, North America, South America, Middle East, Australia and other overseas markets; Product quality is unanimously recognized the overseas customers.

Specification:

The following are normal specifications **1800mm m shape diamond segment**:

Diameter(mm)	Thickness(mm)	Teeth(pcs)	L	W	H	Hole(mm)	Max. RPM
1800mm,27inch	7.2(8.0)	120	24	10.0/9.2	13/15/20	80/100	500

Blade Set 锯片组合	Blade Diameter 锯片直径	Thickness 基体厚度	Segment Size 刀头尺寸	Cutting Stone 切割石材
#	#	mm	LxWxH	#
Multi Size	2200-600 Multi	4.5	24x6.4/5.6x13H(15H)	Granite 花岗岩
Multi Size	2200-600 Multi	5.0	24x7.0/6.2x13H(15H)	Granite 花岗岩
Multi Size	2200-600 Multi	5.5	24x7.4/6.6x13H(15H)	Granite 花岗岩
Multi Size	2200-600 Multi	6.5	24x8.4/7.6x13H(15H)	Granite 花岗岩
Multi Size	2500-800 Multi	5.5	24x7.4/6.6x13H(15H)	Granite 花岗岩
Multi Size	2500-800 Multi	6.5	24x8.4/7.6x13H(15H)	Granite 花岗岩
Multi Size	2500-800 Multi	7.2	24x9.2/8.4x13H(15H)	Granite 花岗岩
Multi Size	1600-960 Multi	6.5	24x8.4/7.6x13H(15H)	Granite 花岗岩
Multi Size	1600-960 Multi	7.2	24x9.2/8.4x13H(15H)	Granite 花岗岩
Single Size	40"/1000mm	4.5-5.0	24x7.0/6.2x13H(15H)	Granite 花岗岩
Single Size	48"/1200mm	5.0-5.5	24x7.5/6.5x13H(15H)	Granite 花岗岩
Single Size	64"/1600mm	6.5-7.2	24x9.2/8.4x13H(15H)	Granite 花岗岩
Single Size	48"/1200mm	4.0	24x5.5x8H(10H)	Marble 大理石
Single Size	48"/1200mm	4.5	24x6.0x8H(10H)	Marble 大理石
Single Size	48"/1200mm	5.0	24x7.5x8H(10H)	Marble 大理石
Single Size	48"/1200mm	5.5	24x8.0x8H(10H)	Marble 大理石
Single Size	64"/1600mm	6.5-7.2	24x9.2x10H(8H)	Marble 大理石
Single Size	64"/1600mm	6.5-7.2	24x9.5x13H(10H)	Marble 大理石

The above specifications is only for reference, other specifications may be available as per

customer's demand.

Factory=Quality Control=Competitive Price=Own technology=OEM

Note:

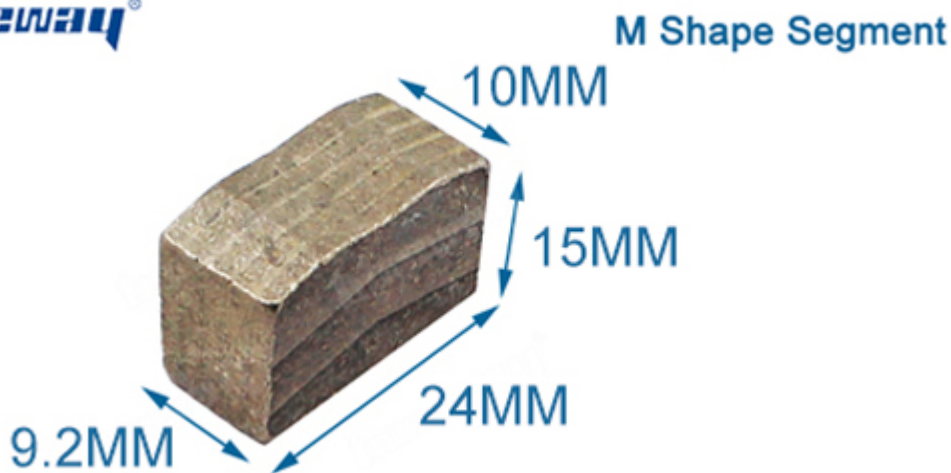
Cutting of the cutting tools to add some water, and water flow, make it a better cooling effect.

Otherwise required for composite saw blade speed in 280-320 revolutions per minute, car speed away too fast!

Product Details:

1800mm m shape diamond segment

boreway®



Example :

Stone is soft and abrasive therefore we would use a hard bonded blade. Reinforced concrete with river pebble aggregate is hard therefore we would use a soft bonded blade.

Hard Bond

Means that the compilation of metals when sintered together forms a segment of approximately 105 to 120 HRB (hardness) and is very resistant to the soft abrasive materials being sawn, thus releasing diamond at the appropriate rate.

Hard bonds typically consist of the following metal powders – cobalt, iron, tungsten carbide and are grey to dark grey in colour.

Soft Bond

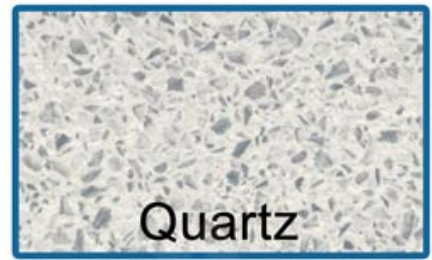
Means that the compilation of metals when sintered together forms a segment of approximately 90 to 105 HRB (hardness) and allows the segment to wear quicker thus retaining diamond on the cutting surface.

Soft bonds typically consist of the following metal powders - copper, bronze and cobalt, and are generally bronze to light silver in colour.

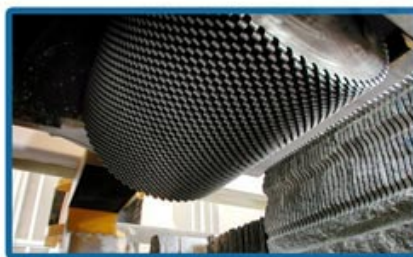
Applications:

1800mm m shape diamond segment using in block cutting for 900-3500mm circular saw blades for block cutting

Diamond segment cutting granite, sandstone, various hard stone with quartz.
Hot press v shape diamond segment only wet use



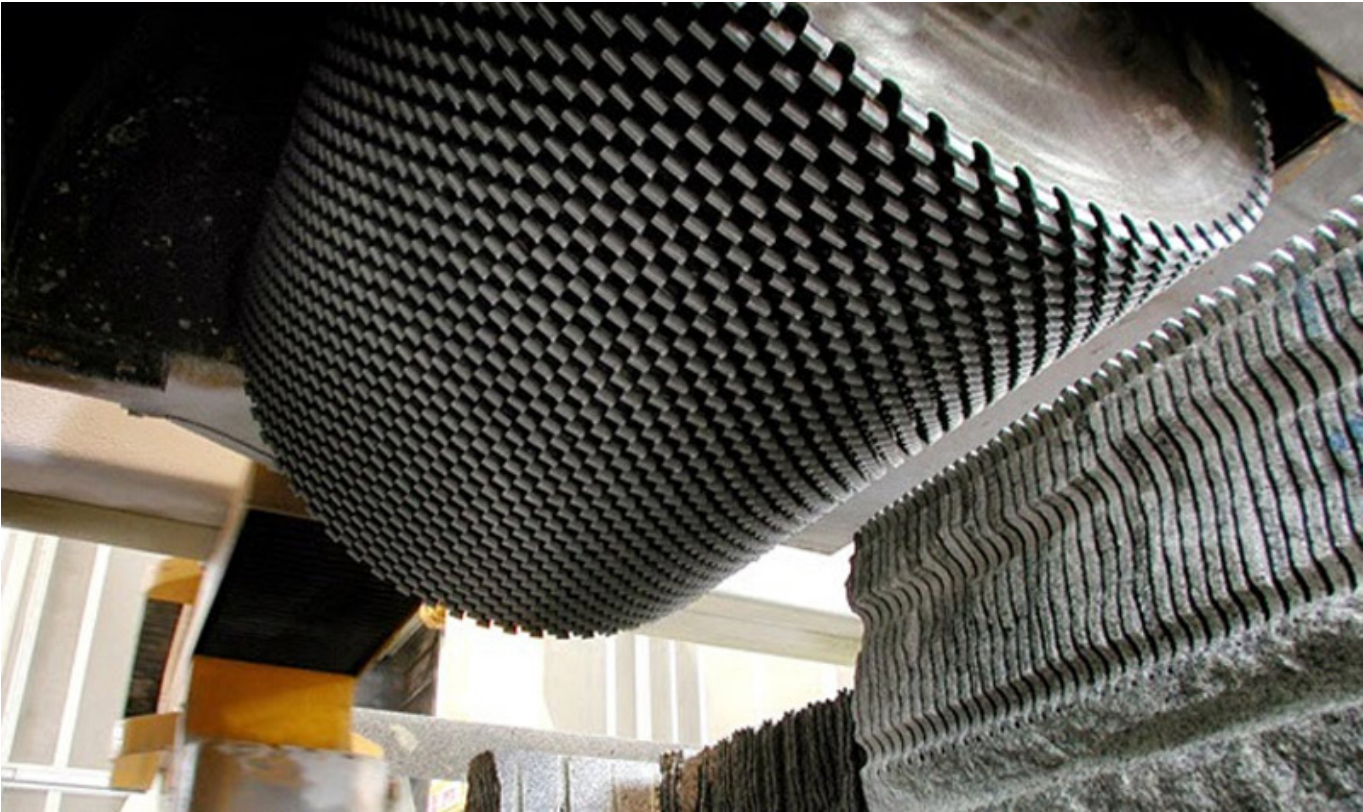
For Block Cutting of Granite, Sandstone, Slate, Kinds of Hard Stone with quartz



One is single size multi cutter, which all blade sizes in same thickness and diameter while the other is multi size multi cutter, two sizes or more different size diameter blades used together in one stone machine.

Applications machine:

1800mm m shape diamond segment used for single or multi circular saw blade from 900mm to 3500mm, cutting of granite, sandstone, various hard stone with quartz.



Our factory use original high grade diamond



Other factory mix second diamond selected from waste segment

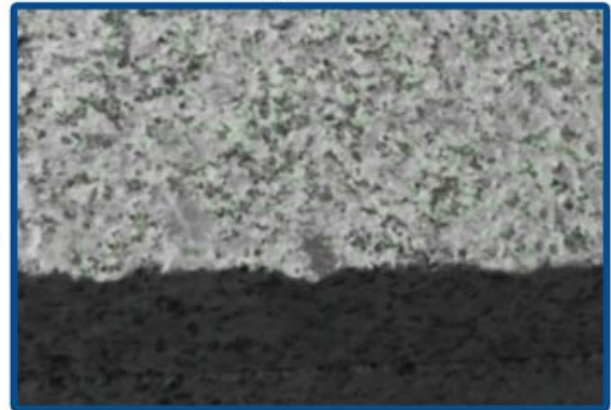


pk

Our blade cutting effect



Other supplier blade cutting effect



pk

1. If the material is hard, the bond of the diamond segments should be softer.
Because diamonds will become blunt when cutting hard material. Softer bond can be worn down with the blunt diamonds faster, then make new diamonds beneath be more easily exposed to participate in cutting
2. If the material is relatively softer, the bond should be harder.
The diamonds can last longer in this case. The harder bond wears slower, so that it can hold the diamonds also longer. This can make better use of the diamonds and prolong the diamond tool's service life.

Applications machine:

Welding method: **1800mm m shape** diamond **segment** silver welding by high frequency welding machine

High frequency silver welded machine is recommended instead of welding by fire.

Don't weld diamond segment for a long time, just a few minutes, otherwise the diamond inside might be damaged because of the high temperature, which will affect the cutting performance of the granite segment greatly.



Brazing Machine Welding Rack



Three Phase 380V 30kW High
Frequency Induction Welding Machine



Welding segment effect

Related Products:



Boreway Machinery Co.,Ltd
www.diamondtools.top
www.boreway.net

[1800mm Multi-Layer Segment](#)



Boreway Machinery Co.,Ltd
www.diamondtools.top
www.boreway.net

[L Shape Diamond Blade Segments](#)

About us:





Packing & Delivery:

1. Tools packing in carton cases;
2. When tools are in large quantities, they are packing in wooden cases.

-DELIVERY-

Less than 45kg, generally delivery by express (Door to Door).



By Air / Sea for batch goods, Airport / Port receiving.

BY AIR



BY SEA



Our service:

1. Low order quantity: It can meet the test order you need.
2. Fast delivery: We get great discounts from freight forwarders.

3. OEM Acceptable: We can produce according to your samples or drawings.
4. Good quality: We have a strict quality control system. Has a good reputation in the market.
5. Good service: We regard our customers as God with a high degree of professionalism and enthusiasm.

FAQ:

1. If we want to order your product, how do we know your quality?

You can test with a small order, and then you will know the quality. Nowadays, many people in the world use Chinese products because of their high quality and high cost performance. We are a professional diamond tool manufacturer with more than 8 years of manufacturing experience.

2. Can you provide samples for free?

We do not provide free samples. Based on years of experience, we believe that customers will want them because of their reliable quality. By purchasing samples, we will cherish and appreciate them and make them get more. We are ready to offer our potential customers a special discount on samples. It's very important that you give us feedback, and we will appreciate it.

3. Does your company accept customization?

Of course, we accept customization. Including different colors, cutting objects, etc. We can also tag your own label and company brand. If you want us to make any new products for you, just send your products to us. Whether it's drawings or samples, we have the ability to produce the same products. We will not sell these products to others, only customers can get permission.

Please note:

Please use high frequency Silver Welded machine instead of Fire to make the brazing, the welding time is only a few seconds, otherwise the diamond inside the segments will probably be damaged by the high temperature, then the cutting performance will be Reduced!

Contact us:

Fujian Nanan **boreway** Machinery Co.,Ltd.



No.605 Huahui Center, Shuitou Town 362342 Quanzhou, Fujian, China



TEL: (+86)595-86990206 /



Fax: (+86)595-86990220



Mobile/WhatsApp/Wechat: (+ 86) 18650679939



E-mail: boreway@boreway.com



Lyon Chang