

**Introduction:**

Diamond segment router bit is widely used on doing bullnoses on 20mm granite and other natural stones.

These are fitting master, sector and other profiling machines.

**Features:**

1. Good balance and stable performance.
2. Sintered segment is easily stock removal.

**Parameters:**

Diamond Profile Router Wheel

<b>Diameter</b>	<b>Shape of Stone</b>	<b>Thickness</b>	<b>Grit No.</b>
50~125mm	A, B, D, E, F, G, H, I, L, M,N, O,P,Q,S,T,U, V,WF,DD,DC	20mm 30mm 40mm 50mm	Coarse Medium Fine

The specifications only for reference, other specifications can be customized.

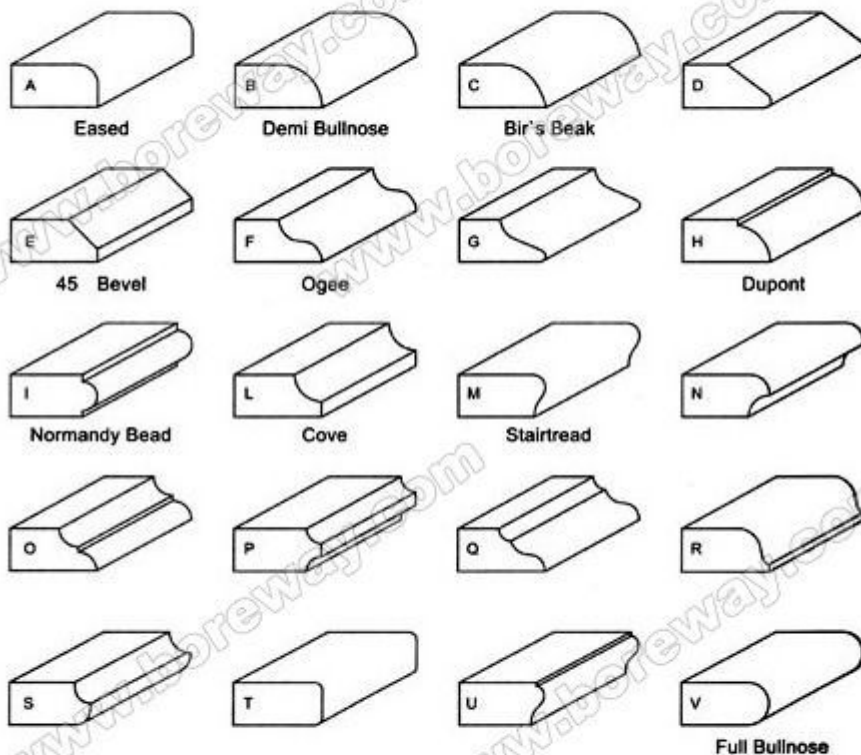
**Pictures of Product:**

Diamond Profile Router Wheel

**boreway**®



**Boreway Machinery Co., Ltd.**  
[www.diamondtools.top](http://www.diamondtools.top)  
[www.boreway.com](http://www.boreway.com)



Boreway Machinery Co., Ltd  
[www.boreway.com](http://www.boreway.com)

**Contact Us:**

Fujian Nanan **boreway** Machinery Co.,Ltd.

 No.605 Huahui Center, Shuitou Town 362342 Quanzhou, Fujian, China

 **TEL:** (+86)595-86990206 /  **Fax:** (+86)595-86990220

 **Mobile/WhatsApp/Wechat:** (+ 86) 18650679939

 **E-mail:** [boreway@boreway.com](mailto:boreway@boreway.com)

 **Lyon Chang**