

Introduction:

100mm aluminum snail lock back polishing backer pad, Can be widely used in grinding, polishing artificial stone, furniture and wood product, metal etc.The adapter has M14,5/8"-11.

The "twist and lock" design saves time and increases productivity.

Feature:

1. For high speed polishing grinders.
2. For dry or wet polishing pads.
- 3.For connecting with polishing pads.
- 4.We can offer our clients good after-sale service and professional technical assistance.

Specification:

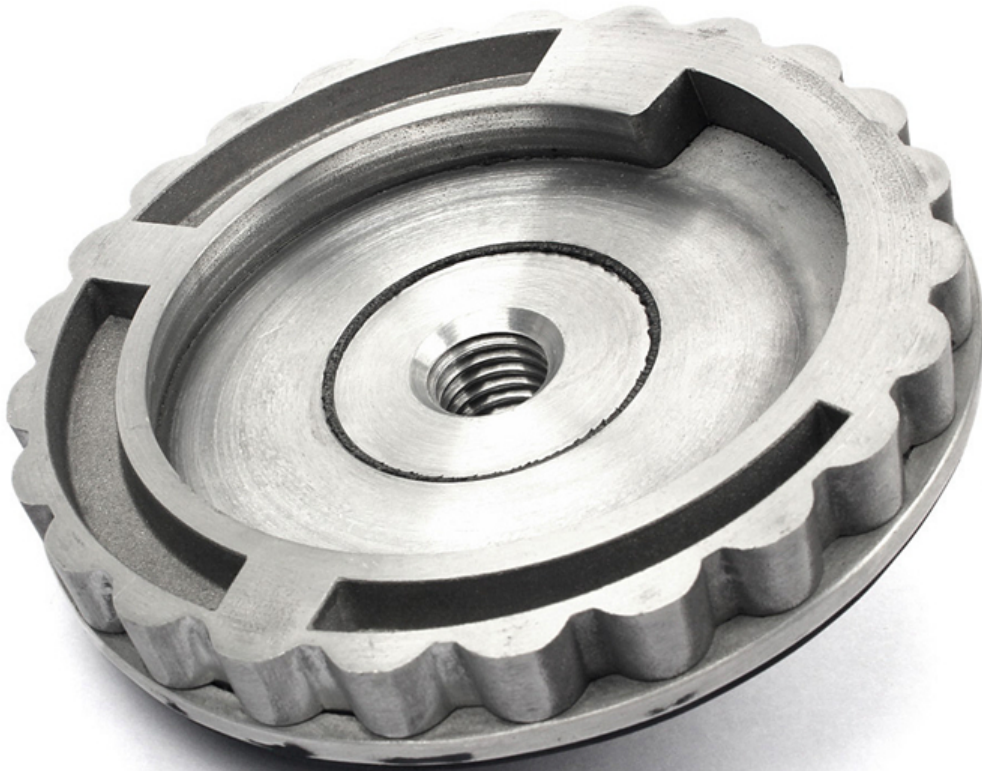
P
r
o
f
e
s
s
i
o
n
a
l
a
n
d
m
a
n
u
f
a
c
t
u
r
e
r
s

S
N
A
U
D
O
D
A
E
F
M
D
S
S
S
D
R
C
K
O
B
E
R
T
E
B
a
d

Picture:

4inch 100mm Aluminum Snail Lock Backer Pad For Diamond Edge Polishing

boreway®



Boreway Machinery Co., Ltd.
www.diamondtools.top
www.boreway.com

boreway®



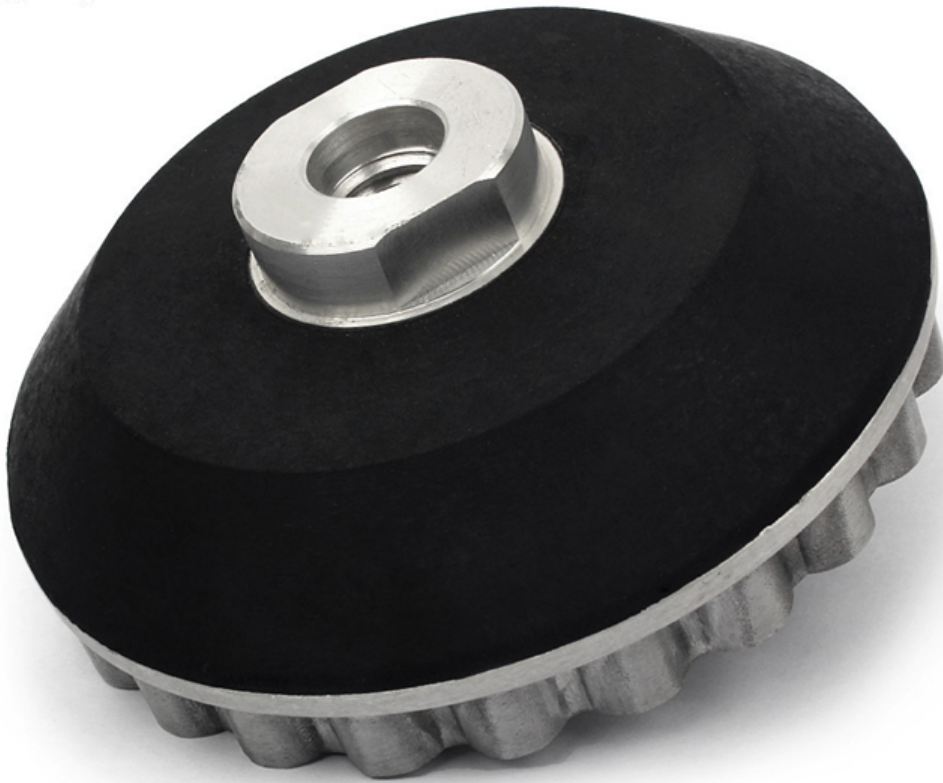
Boreway Machinery Co., Ltd.
www.diamondtools.top
www.boreway.com

boreway®



Boreway Machinery Co., Ltd.
www.diamondtools.top
www.boreway.com

boreway®



Boreway Machinery Co., Ltd.
www.diamondtools.top
www.boreway.com



Boreway Machinery Co., Ltd.
www.diamondtools.top
www.boreway.com

Contact us:

Fujian Nanan Boreway Machinery Co.,Ltd.
Address: Shuitou Town,Quanzhou, Fujian, China
Post Code: 362342
TEL: (+86)595-86990206
FAX: (+86)595-86990220
WhatsApp: +86-15659082992
Email: boreway02@boreway.net