

Specifications:

17" Surface Fabricating Tool Bush Hammered Plate With 6 Rollers 45 Tip Carbide Alloy Segments

17" Surface Fabricating Tool Bush Hammered Plate is suitable for surface fabricating, making bush hammered effects for stone products. It's scrollable and highly efficient, for example, a roller of 200mm's diameter can fabricating more than 100m2 Stone products per day. We can sell the roller separately, and we have plenty of styles and specifications for the roller starts form 125mm to 700mm. And the pins of roller can be customized as well.

The normal size of **17" Surface Fabricating Tool Bush Hammered Plate:**

Size	Roller No.	Layer No.	Grains No.	Material
430MM	6 Rollers	Double Layer	45 Grains	Tungsten Carbide+Alloy

Specially designed tools are available for any standard application.
We can customize tools as per your exact needs.

Introduction:



17" Surface Fabricating Tool Bush Hammered Plate is suitable for surface fabricating, making bush hammered effects for stone products. It's scrollable and highly efficient, for example, a roller of 200mm's diameter can fabricating more than 100m² Stone products per day. We can sell the roller separately, and we have plenty of styles and specifications for the roller starts form 125mm to 700mm. And the pings of roller can be customized as well.

Our bush hammer tools adopted the sophisticated welding technology and selecting high quality aluminum alloy to casting, bush hammerer's grit can be changed through the adjustment of spring elasticity on bush hammer, manual grinding machine press. Both enlarging spring's interval to reduce spring elasticity and reducing machine's press can enhance bush hammer vibration to make bush hammered face rough. Widely used on granite, marble sandstone to make rough surface.

Feature:

- 1) Grain:45S.
- 2) Durable metal and diamond compound.
- 3) Different granularities and sizes as requested for the diamond roller.
- 4) Bush hammer roller is suitable for surface fabricating, making bush hammered effects for

stone products.

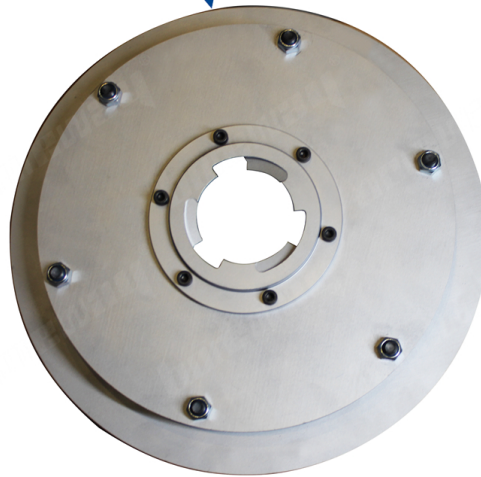
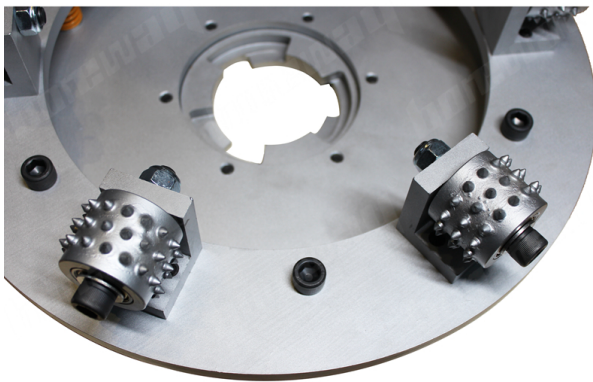
5) It's scrollable and rotary and highly efficient, for example, a roller of 200mm's diameter can fabricate more than 100M2 stone products per day.

Product Details:

17" Surface Fabricating Tool Bush Hammered Plate

boreway®

boreway®



boreway®

boreway®



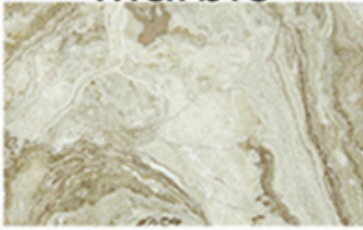
Grinding Effect



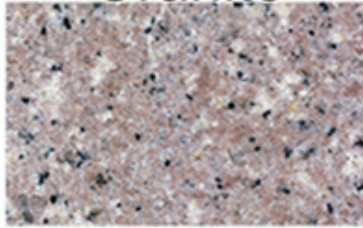
Applicable Machines:

17" Surface Fabricating Tool Bush Hammered Plate is used sophisticated welding technology and selecting high quality aluminum alloy to casting, bush hammered's grit can be changed through the adjustment of spring elasticity on bush hammer, manual grinding machine press. Both enlarging spring's interval to reduce spring elasticity and reducing machine's press can enhance bush hammer vibration to make bush hammered face rough. Widely used on granite, marble sandstone to make rough surface.

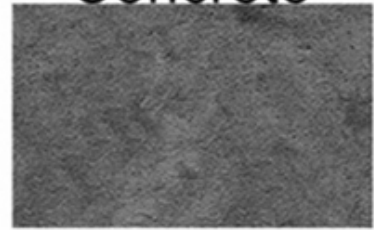
Marble



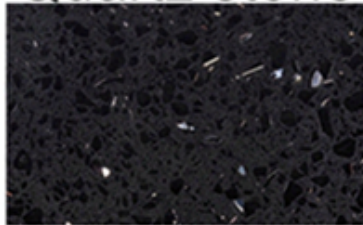
Granite



Concrete



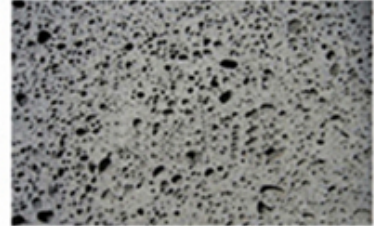
Quartz stone



Sandstone



Volcanic rocks



About Us:



Our Service:

- 1.Low MOQ: It can meet your trial order need well.
- 2.OEM Accepted: We can produce according to your sample or drawings.
- 3.Good Service: We treat our clients as God with high professionalism and passion.
- 4.Good Quality: We have strict quality control system. Good reputation in the market.
- 5.Fast Delivery: We have big discount from forwarder.

FAQ:

1.How could we know the quality, if we want to order your products?

Please just test them with a very small order, then you will know the quality. At present,so m any people in the world to use Chinese products, because of the high quality and most compe titive prices. We are professional manufacturer in supplying diamond tools for more than 8 ye ars. Anyway, confirming our products quality, a small trial order for testing will be necessary.

2.Can you offer free samples?

We don't offer free samples, according to our many years experience, we think people get the samples by paying, they will cherish and appreciate more what they get. But we are willing to give our potential customers a special discount which they are used to do a testing. It is very important to give us feedback, we appreciate it.

3.Does your company accept custom-made?

Surely, we accept it. Including different color, grit etc. We also can mark your own logo and brand on the pad. Any new products you want us to produce for you, just send us your drawing or sample, we will produce the same one. We will not sell this kind of products to other customers only if we get your permission.

Contact Us:

Fujian Nan'an **boreway**® Machinery Co.,Ltd.



No.605 Huahui Center, Shuitou Town 362342 Quanzhou, Fujian, China



TEL: (+86)595-86990206 /



Fax: (+86)595-86990220



Mobile/WhatsApp/Wechat: (+ 86) 18650679939



E-mail: boreway@boreway.com



Lyon Chang