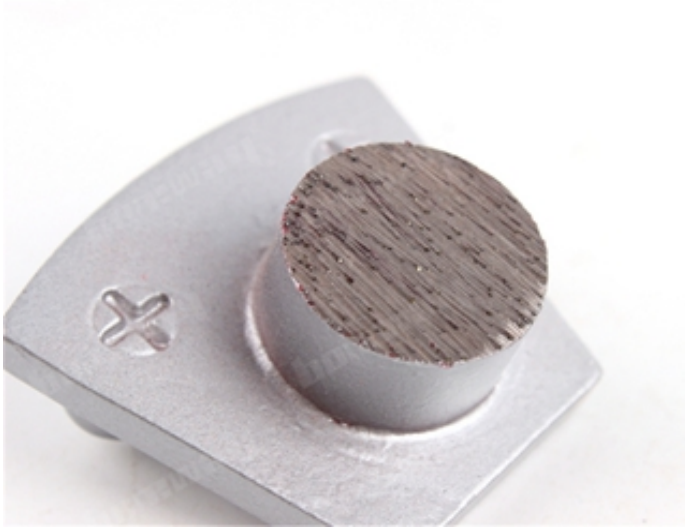


□□ :



□□□□ □□ □□□□□ □ □□ □□ □□□□ 2 □ □□ □□ □□□□□□ □□

2 □ □□□□□ □□□□ □□ □□ □□ □□□□□ □□□ □□ □□□□□ □□□ □□ □□□□.

2 □ □□□□□ □□□□ □□ □□ □□ □□□□□ □□ □□ □□ □□ □□□ □□ □□□ □□ □□ □□□□□□.

□□□ :

□□□ □□□□ □□ 2 □ □□□□□ □□□□ □□□□□:

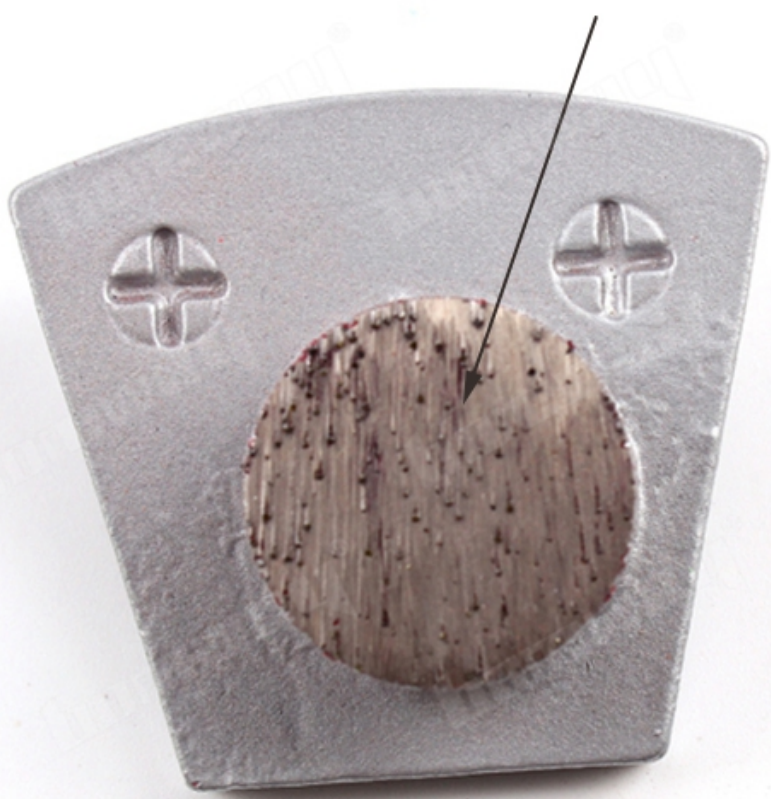
□□:	2 □ □□□□□ □□□□ □□
□□□□ □□:	16-270 # □
□□ □□:	□□ □□□ □□□□
□□:	D25mm * H12.5mm * 1T
□□:	□□□□□□ □□ □□
□□:	□□□□ □ □□ □ □□
□□:	2 □□ □ Redi Lock □□
□□:	□ □□ □ □□ □□ □□
□□:	□□ □□□□ □□, □□□□ □□, □□ □□, □□ □□□ □□, □□ □□□ □□

00 00 00 000 00 0000 0000 0000 0 00000. 0000 0 0 00000  
00 0000 00 0000 00000000.

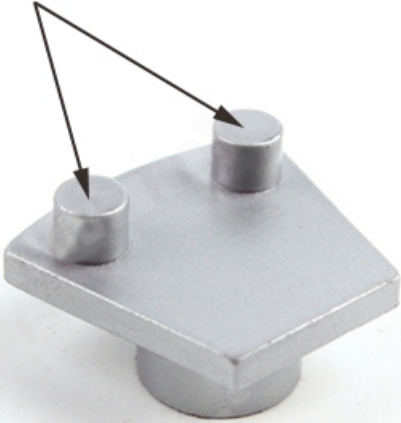
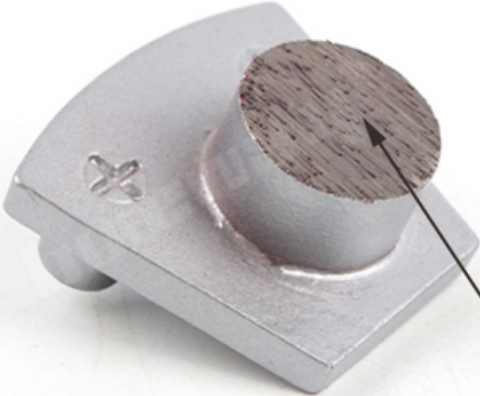
00 00 00 :

2 0 000000 00000 00:

Single Round Segment  
D25mm\*H12.5mm\*1T

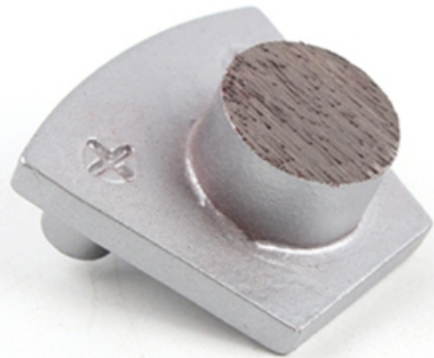


Double Pins Blank



Grit: 16-270# etc.

Diamond And Metal Powder





[\[Link\]](#)

**[Link] :**

**2** 个 磨盘 磨盘 个 个, 个, 个 个 个 个 个, 个 个 个, 个 个 个 个 个 (个, 个) 个 个 个。

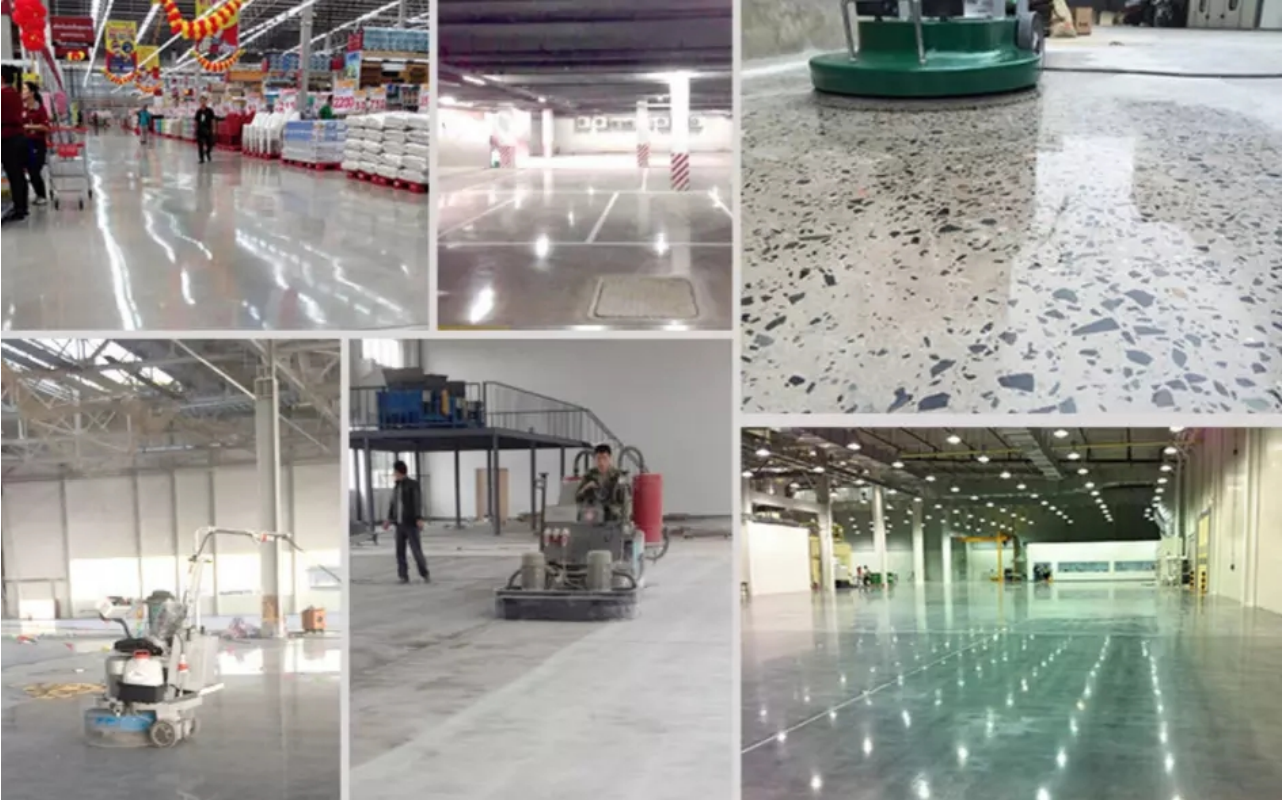
(1) 个 个 : 16 #, 24 #, 30 #, 36 #.  
 个 个 个 个, 个 个 个 个 个 个 个 个 个 个。

(2) 个 个 : 46 #, 50 / 60 #, 60 / 80 #, 100 #  
 个 个 个 个 个 个 个, 个 个 个 个 个 个 个 个 个 个。

(3) 个 个 : 120 #, 150 #, 180 #, 200 #, 270 #  
 个 个 个 个 个 个 个 个, 个 个 个 个 个 个 个 个 个 个 个。

00, 00 0 00 00 0000 00.

1. 00 00 (0000) - 00 000000 00 0000 0000 0000 00 000000 0000 0000 0000 00 0000 0000 000000 000000. 0000 0000 0 0 000000.
2. 00 00 (0000) - 00 0000 0000 00 0000 00 00 00.
3. 00 00 (0000) - 000000000 00 0000 0000 0000 000000 00 0000 00 00 0000 000000.





**Before Grinding and Polishing**



**After Grinding and Polishing**

☐☐:

CONCRETE HARDNESS	Xtreme Hard	Very Hard	Hard	Medium Hard	Soft	Very Soft
PSI	6500-9000	5000-7000	4000-5000	3000-4000	1500-3500	1000-2000
MPA	C50-C65	C40-C55	C30-C50	C20-C40	C15-C25	C10-C20
CODE	XHF	VHF	HF	MHF	SF	VSF
COLOUR						

☐☐ : ☐☐☐ ☐☐☐ ☐☐☐ ☐☐☐☐, ☐☐☐☐☐ ☐☐☐☐☐☐, ☐☐☐☐☐☐☐☐☐.



**Two Round Pins Redi Lock Blank**



**Two Square Pins Redi Lock Blank**

**2 Pin Redi Lock Blank :**

1. Pin Pin Pin Pin Pin Pin.
2. Pin Pin Pin Pin Pin Pin.

Pin:

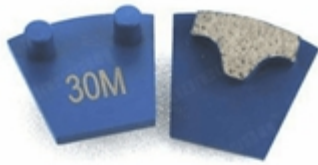
- 1) Pin Pin Pin Pin Pin Pin.
- 2) Pin Pin Pin Pin Pin Pin.
- 3) Pin Pin Pin Pin Pin Pin.
- 4) Two Pins Diamond Grinding Pin Pin Pin Pin Pin Pin Pin Pin Pin Pin.

Pin:

2 Pin Pin Pin Pin Pin Pin, Pin Pin, Pin Pin Pin Pin

Pin Pin:





Boreway Machinery Co.,Ltd  
[www.diamondtools.top](http://www.diamondtools.top)  
[www.boreway.net](http://www.boreway.net)

2 □ □ □ □ □ □ □ □ □ □ □ □



Boreway Machinery Co.,Ltd  
[www.diamondtools.top](http://www.diamondtools.top)  
[www.boreway.net](http://www.boreway.net)

2 □ □ □ □ □ □ □ □ □ □ □ □

□ □ □ □ □ :



□ □ □ □ □ :

1. 鋼絲繩 鋼絲繩 : 鋼絲繩 鋼絲繩 鋼絲繩 鋼絲繩.
2. 鋼絲繩 鋼絲繩 : 鋼絲繩 鋼絲繩 鋼絲繩 鋼絲繩 鋼絲繩 鋼絲繩.
3. OEM 鋼絲繩 : 鋼絲繩 鋼絲繩 鋼絲繩 鋼絲繩 鋼絲繩 鋼絲繩 鋼絲繩.
4. 鋼絲繩 鋼絲繩 : 鋼絲繩 鋼絲繩 鋼絲繩 鋼絲繩 鋼絲繩 鋼絲繩. 鋼絲繩 鋼絲繩 鋼絲繩 鋼絲繩.
5. 鋼絲繩 鋼絲繩 : 鋼絲繩 鋼絲繩 鋼絲繩 鋼絲繩 鋼絲繩 鋼絲繩 鋼絲繩 鋼絲繩.

鋼絲繩:

**1. 鋼絲繩 鋼絲繩 鋼絲繩 鋼絲繩 鋼絲繩 鋼絲繩, 鋼絲繩 鋼絲繩 鋼絲繩 鋼絲繩 鋼絲繩?**

鋼絲繩 鋼絲繩 鋼絲繩 鋼絲繩 鋼絲繩 鋼絲繩. 鋼絲繩 鋼絲繩 鋼絲繩 鋼絲繩 鋼絲繩 鋼絲繩.  
 鋼絲繩 鋼絲繩 鋼絲繩 鋼絲繩 鋼絲繩 鋼絲繩. 鋼絲繩 鋼絲繩 鋼絲繩 鋼絲繩 鋼絲繩.  
 鋼絲繩 鋼絲繩. 鋼絲繩 鋼絲繩 鋼絲繩 鋼絲繩 鋼絲繩 鋼絲繩.  
 鋼絲繩, 8 鋼絲繩 鋼絲繩, 鋼絲繩 鋼絲繩 鋼絲繩 鋼絲繩, 鋼絲繩 鋼絲繩 鋼絲繩 鋼絲繩 鋼絲繩 鋼絲繩.

**鋼絲繩 鋼絲繩 鋼絲繩 鋼絲繩?**

鋼絲繩 鋼絲繩 鋼絲繩 鋼絲繩. 鋼絲繩 鋼絲繩 鋼絲繩 鋼絲繩 鋼絲繩 鋼絲繩.  
 鋼絲繩 鋼絲繩 鋼絲繩 鋼絲繩 鋼絲繩 鋼絲繩 鋼絲繩 鋼絲繩. 鋼絲繩 鋼絲繩 鋼絲繩 鋼絲繩 鋼絲繩.  
 鋼絲繩 鋼絲繩 鋼絲繩 鋼絲繩 鋼絲繩 鋼絲繩 鋼絲繩 鋼絲繩.  
 鋼絲繩 鋼絲繩 鋼絲繩 鋼絲繩 鋼絲繩 鋼絲繩 鋼絲繩 鋼絲繩.

**3. 鋼絲繩 鋼絲繩 鋼絲繩 鋼絲繩?**

鋼絲繩 鋼絲繩. 鋼絲繩 鋼絲繩, 鋼絲繩 鋼絲繩 鋼絲繩. 鋼絲繩 鋼絲繩 鋼絲繩 鋼絲繩 鋼絲繩 鋼絲繩  
 鋼絲繩 鋼絲繩 鋼絲繩. 鋼絲繩 鋼絲繩 鋼絲繩 鋼絲繩 鋼絲繩 鋼絲繩 鋼絲繩, 鋼絲繩 鋼絲繩 鋼絲繩 鋼絲繩.  
 鋼絲繩 鋼絲繩, 鋼絲繩 鋼絲繩 鋼絲繩. 鋼絲繩 鋼絲繩 鋼絲繩 鋼絲繩 鋼絲繩 鋼絲繩 鋼絲繩  
 鋼絲繩 鋼絲繩 鋼絲繩 鋼絲繩 鋼絲繩.

鋼絲繩 鋼絲繩 :

1. 鋼絲繩 鋼絲繩 鋼絲繩 鋼絲繩.
2. 鋼絲繩 鋼絲繩 鋼絲繩 鋼絲繩 鋼絲繩.
3. 鋼絲繩 鋼絲繩 鋼絲繩 鋼絲繩 鋼絲繩 鋼絲繩 鋼絲繩.


鋼絲繩 :

**Fujian Nanan *boreway* Machinery Co.,Ltd.**

 No.605 Huahui Center, Shuitou Town 362342 Quanzhou, 鋼絲繩 鋼絲繩

 鋼絲繩 : (+86) 595-86990206 /  鋼絲繩: (+86) 595-86990220

 鋼絲繩 / **WhatsApp / Wechat** : (+ 86) 13559599186

 鋼絲繩: [boreway05@boreway.net](mailto:boreway05@boreway.net)

 鋼絲繩 鋼絲繩