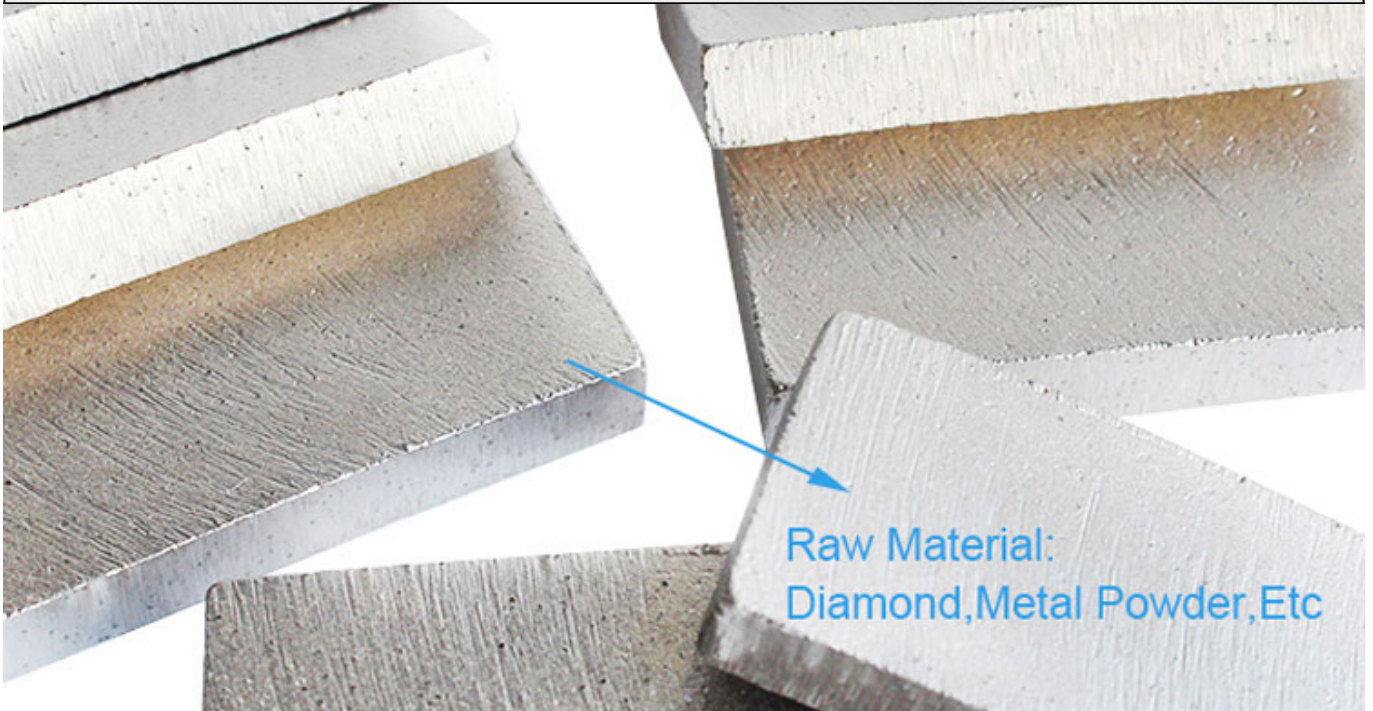


磨石:



磨石 磨頭 磨石 磨料 磨粉 磨盤 磨棒 磨針 磨絲 磨帶 磨布 磨紙 磨膏 磨油 磨液 磨粉機 磨石機 磨針機 磨絲機 磨帶機 磨布機 磨紙機 磨膏機 磨油機 磨液機 磨粉機 磨石 磨頭 磨石 磨料 磨粉 磨盤 磨棒 磨針 磨絲 磨帶 磨布 磨紙 磨膏 磨油 磨液 磨粉機 磨石機 磨針機 磨絲機 磨帶機 磨布機 磨紙機 磨膏機 磨油機 磨液機 磨粉機 磨石 磨頭 磨石 磨料 磨粉 磨盤 磨棒 磨針 磨絲 磨帶 磨布 磨紙 磨膏 磨油 磨液 磨粉機 磨石機 磨針機 磨絲機 磨帶機 磨布機 磨紙機 磨膏機 磨油機 磨液機 磨粉機

磨石:

磨石機 磨石機 1.Sharp 磨石機 磨石機 磨石機 磨石機, 磨石機 磨石機 磨石機 磨石機.

2. 磨石機, 磨石機 磨石機 磨石機.

3. 磨石機 磨石機 磨石機 磨石機, 磨石機 磨石機, 磨石機 磨石機 磨石機 磨石機.

4. 磨石機 磨石機 磨石機 磨石機 磨石機 磨石機.

磨石:

磨石機 磨石機 磨石機 磨石機 磨石機:

Diameter		Thickness	Teeth	Segment Size			Hole	Max. RPM	Cutting Stone
Inch	mm	mm	pcs/set	L	W	H	mm	RPM	#
10"	250	18(2.2)	18	40	3.2	8/10	50/60	3850	Marble
12"	300	1.8(2.2)	22	40	3.2	10/12	50/60	3150	Marble
14"	350	2.2(2.4)	25	40	3.2	10/12	50/60	2750	Marble
16"	400	2.6(2.8)	29	40	3.6	10/12	50/60	2400	Marble
18"	450	2.8(3.0)	32	40	4.0(4.2)	10/12	50/60	2150	Marble
20"	500	2.8(3.0)	36	40	4.0(4.2)	10/12	50/60	1900	Marble
24"	600	36(3.2)	42	40	4.6(4.8)	10/12	50/60	1600	Marble
32"	800	4.2(4.5)	57	40	5.5(6.0)	10/12	50/60	1200	Marble
36"	900	5.0(5.5)	64	40	7.5(8.0)	10/12	60/80	1050	Marble
36"	900	5.0(5.5)	64	24	7.5(8.0)	10/13	60/80	1050	Marble
40"	1000	5.0(5.5)	70	24	7.5(8.0)	10/13	80/100	950	Marble
48"	1200	5.5(6.0)	80	24	7.5(8.0)	10/13	80/100	950	Marble
56"	1400	6.0(6.5)	92	24	8.5(9.2)	10/13	80/100	700	Marble
64"	1600	6.5(7.2)	108	24	9.2(9.5)	10/13	80/100	600	Marble
72"	1800	7.2(8.0)	120 l	24	10.0	10/13	80/100	550	Marble
80"	2000	8.0(9.0)	128	24	11.0	10/13	100/120	500	Marble
86"	2200	8.0(9.0)	132	24	11.0	10/13	100/120	450	Marble
100"	2500	9.0(10.0)	140	24	12.5	13/15	100/120	400	Marble
120"	3000	9.0(10.0)	160	24	12.5	13/15	100/120	350	Marble
140"	3500	9.0(10.0)	180	24	13.0	13/15	100/120	300	Marble

□□ = □□ □□ = □□ □□ = □□ □□ = OEM

□□ : □□ □□□ □□ □ □ □□□□ □□□□ □□□□□□ □□□□ □□ □□ □□ □□ □□□□□□!

□□ □□□□ □ □□ □□□ □□ □□ :

Blade Set	Blade Diameter	Thickness	Segment Size	Cutting Stone
#	#	mm	LxWxH	#
Multi Size	2200-600 Multi	4.5	24x6.4/5.6x13H(15H)	Granite
Multi Size	2200-600 Multi	5.0	24x7.0/6.2x13H(15H)	Granite
Multi Size	2200-600 Multi	5.5	24x7.4/6.6x13H(15H)	Granite
Multi Size	2200-600 Multi	6.5	24x8.4/7.6x13H(15H)	Granite
Multi Size	2500-800 Multi	5.5	24x7.4/6.6x13H(15H)	Granite
Multi Size	2500-800 Multi	6.5	24x8.4/7.6x13H(15H)	Granite
Multi Size	2500-800 Multi	7.2	24x9.2/8.4x13H(15H)	Granite
Multi Size	1600-960 Multi	6.5	24x8.4/7.6x13H(15H)	Granite
Multi Size	1600-960 Multi	7.2	24x9.2/8.4x13H(15H)	Granite
Single Size	40"/1000mm	4.5-5.0	24x7.0/6.2x13H(15H)	Granite
Single Size	48"/1200mm	5.0-5.5	24x7.5/6.5x13H(15H)	Granite
Single Size	64"/1600mm	6.5-7.2	24x9.2/8.4x13H(15H)	Granite
Single Size	48"/1200mm	4.0	24x5.5x8H(10H)	Marble
Single Size	48"/1200mm	4.5	24x6.0x8H(10H)	Marble
Single Size	48"/1200mm	5.0	24x7.5x8H(10H)	Marble
Single Size	48"/1200mm	5.5	24x8.0x8H(10H)	Marble
Single Size	64"/1600mm	6.5-7.2	24x9.2x10H(8H)	Marble
Single Size	64"/1600mm	6.5-7.2	24x9.5x13H(10H)	Marble

Support Sample Processing Customization

Style and Specifications



Contact Salesman

Due to the large number of product specifications and styles, in order to avoid conflicts, please contact the salesman before placing the order.

1

Provide Samples

The manufacturer supports the sample processing and customization, and the buyer provides the sample first to communicate the production requirements.



2



Mail Samples

According to the buyer's demand for proofing, the manufacturer needs the buyer to pay the proofing fee first, and the sample fee will be returned after the order is concluded.

3

Generate Order

The buyer receives the sample. If satisfied, place an order for batch production. After confirming the receipt, contact the salesman to return the proofing cost.

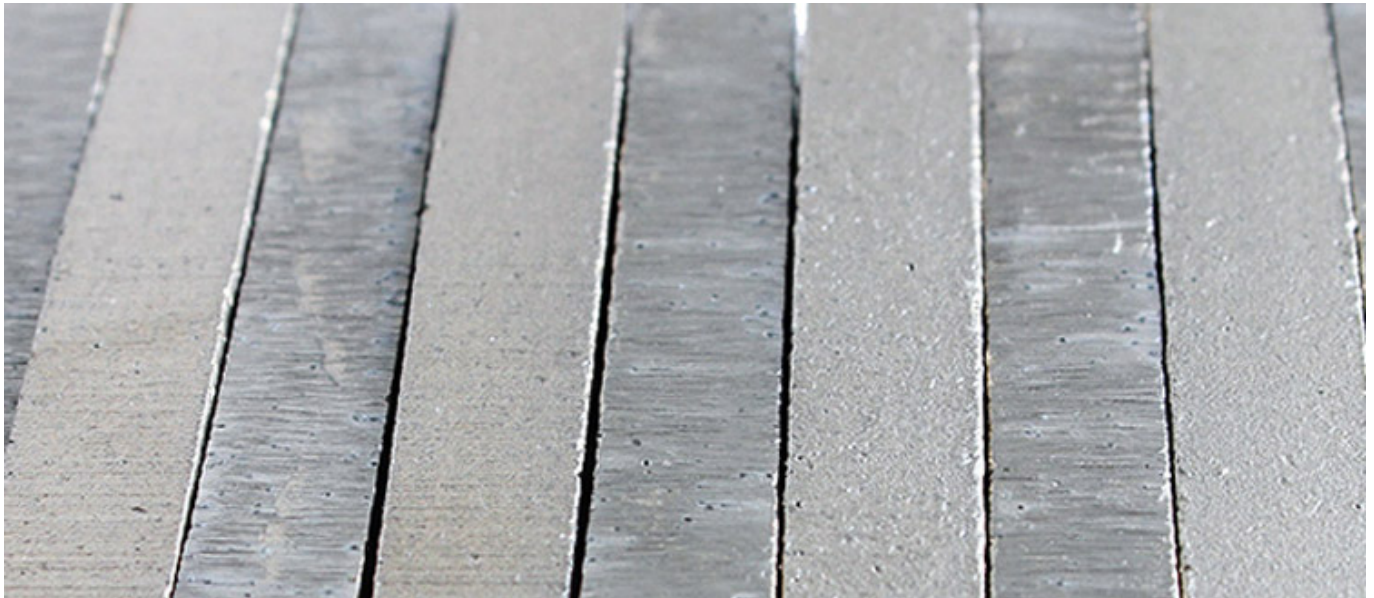


4

□□ □□ □ □□□ □□□ 280-320 rpm□□□□□ □□□□ □□ □□ □□ □ □ □□□□!

□□ □□ □□:

□ □□□ □□□□□ □ □□ □□□□



Our factory use original high grade diamond



pk

Other factory mix second diamond selected from waste segment

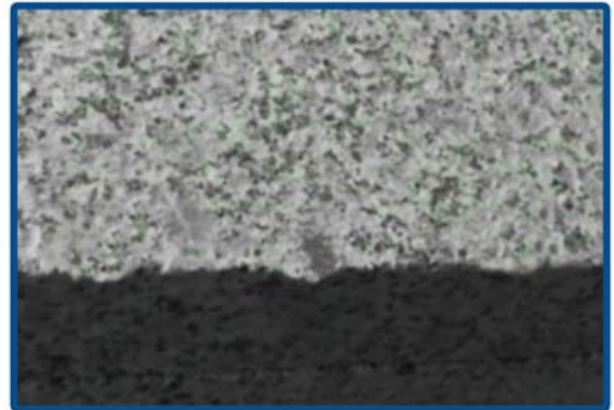


Our blade cutting effect



pk

Other supplier blade cutting effect



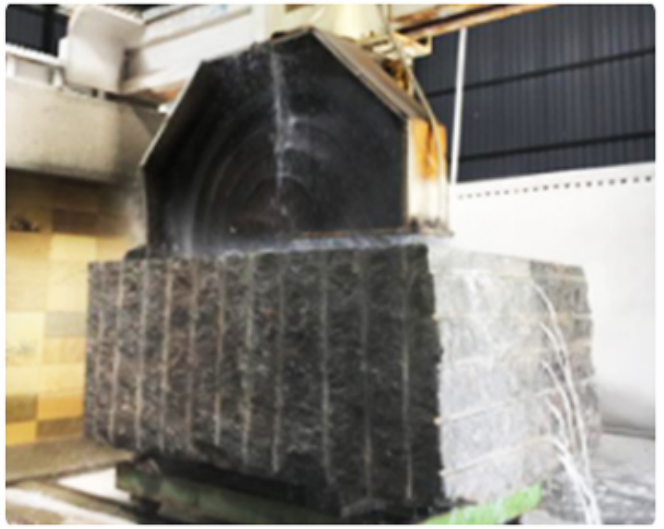
： 我们的刀片切割效果。刀片切割后的表面光滑平整。刀片切割后的表面粗糙不平。

我们的刀片硬度为 105 至 120 HRB (洛氏硬度) 刀片切割后的表面光滑平整。刀片切割后的表面粗糙不平。刀片切割后的表面光滑平整。

我们的刀片硬度为 90 至 105 HRB (洛氏硬度) 刀片切割后的表面光滑平整。刀片切割后的表面粗糙不平。刀片切割后的表面光滑平整。

：

我们的刀片切割后的表面光滑平整。刀片切割后的表面粗糙不平。刀片切割后的表面光滑平整。



□□ □□ □□ □□□□ □□

□□ □□ :

□ □□□ □□□□ □ □□ □□□ 900mm ~ 3500mm □ □□ □□ □□ □□□□ □□□, □□ □□.



□ □ :



□□ □□ :

□□ □□ :

□ □□□ □□□□ □ □□ □□□ □□□ □□□ □□



Brazing Machine Welding Rack

+



Three Phase 380V 30kW High Frequency Induction Welding Machine



Welding segment effect

□□□ □□□□ □□ □□□□ □□□□□□.

□□□□□ □□□□□□ □ □ □□ □ □□□□ □□□□□. □□□□ □□□□ □□ □□□□□ □□□ □□□□ □□ □□□□ □□ □□□ □ □□□ □ □□□□.

□□ □□:



Boreway Machinery Co., Ltd
www.diamondtools.top
www.boreway.net

300 ~ 800mm U □□□□□□□□



Boreway Machinery Co., Ltd
www.diamondtools.top
www.boreway.net

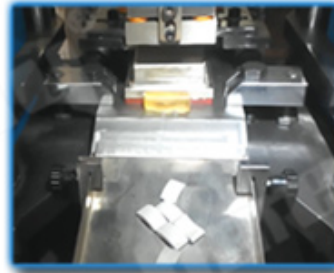
□□□□□□□□□□

□□□ □□ :

□ □□□ □□□□□ □ □□ □□□□



● Cold Press Mschine



● Fill The Mold



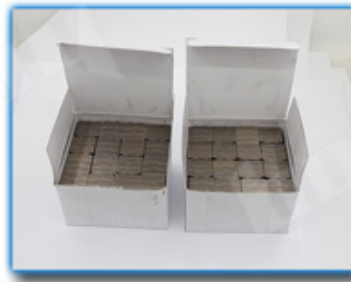
● The Product Polishing



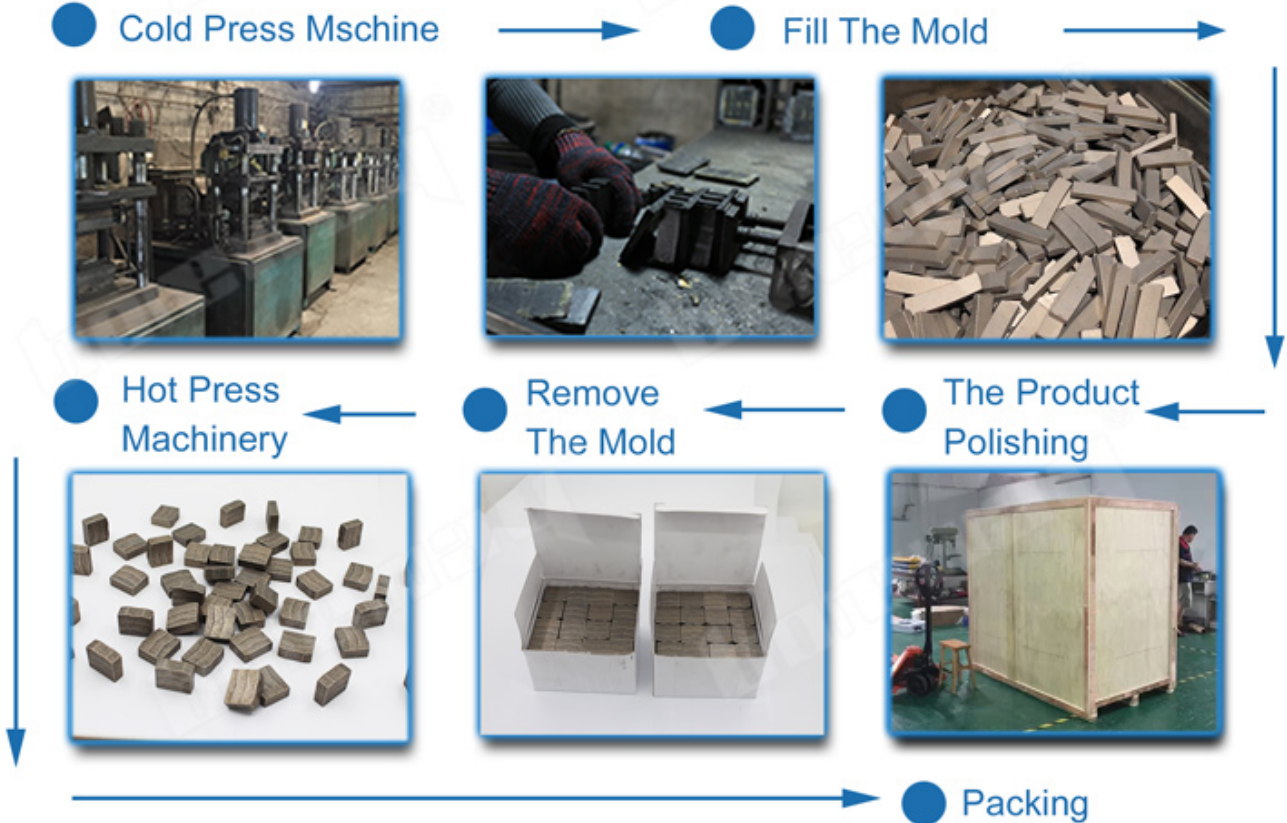
● Remove The Mold



● Hot Press Machinery



● Packing







□□ □ □ □ :

□□:

1. □□ □□ □□ □□

□□ □□□□ 2.By □□ / □□, □□ / □□ □□

3. 45 □□□□, □□□□ □□ □□□□ (□)

4. □□□ □□ □ □□ □□□□ □□□□□.

☎ :

歡迎各界人士垂詢。本公司備有各種型號之機器。價格公道。歡迎各界人士垂詢。本公司備有各種型號之機器。價格公道。歡迎各界人士垂詢。

☎☎☎:

Fujian Nanan **boreway** Machinery Co.,Ltd.



No.605 Huahui Center, Shuitou Town 362342 Quanzhou, 中國



☎ : (+86) 595-86990206 /  ☎: (+86) 595-86990220



☎ / **WhatsApp** / **Wechat** : (+ 86) 18650679939



☎☎: **boreway@boreway.com**



☎ ☎