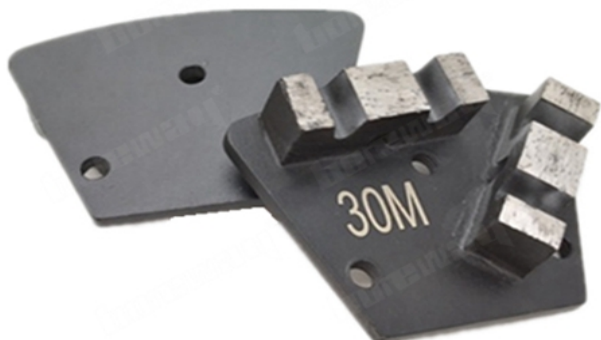


□□ :



2 □□ M □□□□□ □□ □ □□ □□ □□□□ □ □□□

□□□ □□ □□ □□□□ □□ □□. □□ □□ □□□□□□ □□□ □□ □□□□□ □□□□ □□ □□□□ □□□□.

□□□ □□ □□ □□□□ □□ □□. □□ □□ □□□□□□ □□ □□ □□□ □□ □□ □□□ □□ □□□□ □□ □□ □□□□□□.

□□:

□□□ □□□□ □□□□□ 2 □□ M □□□□□ □□ □ □□ □□ □□ □□□□ □□□□□ □ □□□ :

□□:	□□□□ □□
□□:	□□ M □□□□
□□□□ □□:	16-270 # □
□□:	□□□□□□ □□ □□
□□□ :	3 X M6 □□ M8 □□ □□ □
□□:	□□□□ □ □□ □ □□
□□:	□□ □□ □□
□□:	□□ □□ □□, □□ □□, □□ □□, □□ □□, □□ □□ □□, □□ □ □□ □□.

□□ □□ □□ □□□ □□ □□□ □□□ □□□ □ □□□□. □□□□ □ □ □□□□ □□ □□□ □□ □□□ □□□□□□.

□□ □□ □□:

2 M segments are used for grinding:

Segment Grit: 16-270# etc.

Two M Segments



Quick Connecting Grinding Machine



3 X M6/M8 Thread Holes



3 X Bare Holes



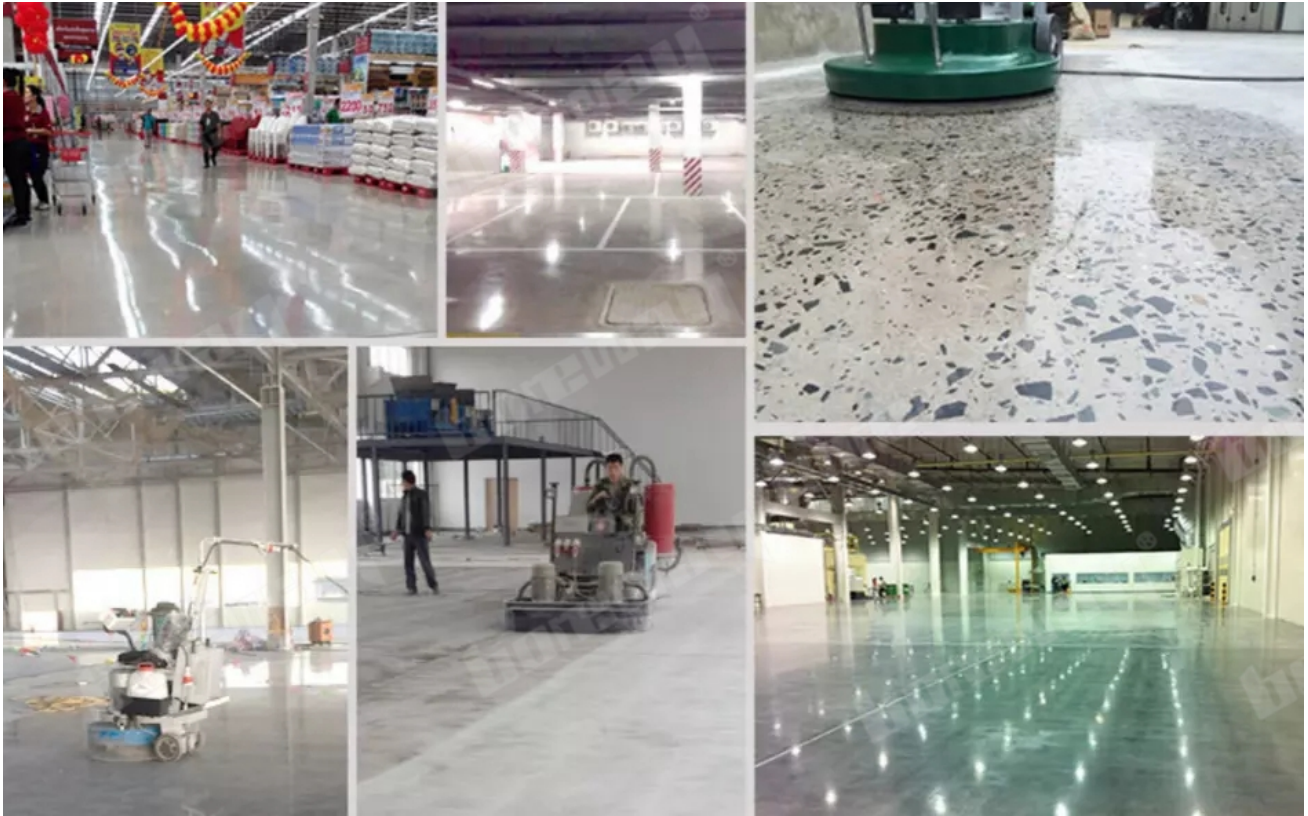
Parts List:

1. 3 M6 screws
2. 3 M8 screws
3. 3 nuts

Notes:

For more information, please contact us. We are a professional manufacturer of grinding machines, grinding wheels, grinding segments, grinding machines (handheld, bench) and grinding tools.





□□:

CONCRETE HARDNESS	Xtreme Hard	Very Hard	Hard	Medium Hard	Soft	Very Soft
PSI	6500-9000	5000-7000	4000-5000	3000-4000	1500-3500	1000-2000
MPA	C50-C65	C40-C55	C30-C50	C20-C40	C15-C25	C10-C20
CODE	XHF	VHF	HF	MHF	SF	VSF
COLOUR						

□□ : □□□ □□□ □□ □□ □□, □□□□ □□ □ □□, □□□ □□□□□.

□□ :

1. □□□□□ □□□ □□□ □□ □□□ □□□□□ □□□ □□ □□□ □□□□□.
2. □□□□ □□ □□□ □□□□ □□□ □ □□□ □□□ □□ □□□□.
3. □ □□□□ □□□ □□ □□ □□ □□□□□ □□□.

□□:

□□□ □□□□, □□□□ □□, □ □□ □□ □□ □

□□ □□:



Boreway Machinery Co., Ltd
www.diamondtools.top
www.boreway.net

2 000 0000 00



Boreway Machinery Co., Ltd
www.diamondtools.top
www.boreway.net

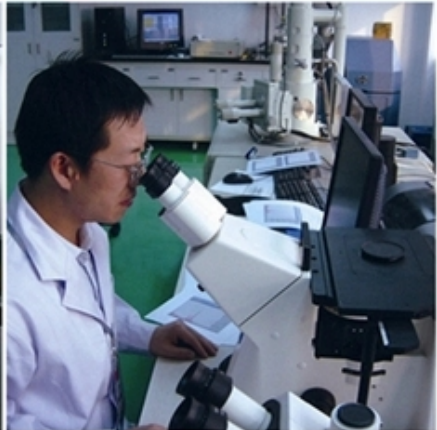
00 00 00



Boreway Machinery Co., Ltd
www.diamondtools.top
www.boreway.net

2 000 0000 00

0000 00 :



0000 0000 :

1. 00 00 00 : 0000 0000 0000 00.
2. 00 00 : 00 00000000 0 00 00000000.
3. OEM 00 : 0000 00 00 0000 00 00 0 0 0000.

4. 鋼 鋼 : 鋼 鋼 鋼 鋼 鋼 鋼 鋼 鋼. 鋼 鋼 鋼 鋼 鋼 鋼.
5. 鋼 鋼 : 鋼 鋼 鋼 鋼 鋼 鋼 鋼 鋼. 鋼 鋼 鋼 鋼 鋼 鋼.

鋼:

1. 鋼 鋼 鋼 鋼 鋼 鋼 鋼 鋼, 鋼 鋼 鋼 鋼 鋼 鋼 鋼 鋼?

鋼 鋼 鋼 鋼 鋼 鋼 鋼 鋼. 鋼 鋼
 鋼 鋼 鋼 鋼 鋼 鋼 鋼 鋼. 鋼 鋼
 鋼 鋼 鋼. 鋼 鋼 鋼 鋼 鋼 鋼 鋼 鋼.
 鋼 鋼, 8 鋼 鋼 鋼, 鋼 鋼 鋼 鋼 鋼 鋼 鋼, 鋼 鋼 鋼 鋼 鋼 鋼 鋼 鋼
 鋼 鋼.

鋼 鋼 鋼 鋼 鋼 鋼?

鋼 鋼 鋼 鋼 鋼 鋼. 鋼 鋼 鋼 鋼 鋼 鋼 鋼 鋼 鋼 鋼.
 鋼 鋼 鋼 鋼 鋼 鋼 鋼 鋼 鋼 鋼 鋼 鋼. 鋼 鋼
 鋼 鋼 鋼 鋼 鋼 鋼 鋼 鋼 鋼 鋼 鋼 鋼.
 鋼 鋼 鋼 鋼 鋼 鋼 鋼 鋼 鋼 鋼 鋼 鋼.

3. 鋼 鋼 鋼 鋼 鋼 鋼?

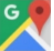
鋼 鋼 鋼 鋼. 鋼 鋼, 鋼 鋼 鋼 鋼. 鋼 鋼 鋼 鋼 鋼 鋼 鋼 鋼 鋼 鋼
 鋼 鋼 鋼 鋼. 鋼 鋼 鋼 鋼 鋼 鋼 鋼 鋼 鋼 鋼 鋼 鋼, 鋼 鋼 鋼 鋼 鋼 鋼.
 鋼 鋼 鋼, 鋼 鋼 鋼 鋼. 鋼 鋼 鋼 鋼 鋼 鋼 鋼 鋼 鋼 鋼
 鋼 鋼 鋼 鋼 鋼 鋼.

鋼 鋼 :

1. 鋼 鋼 鋼 鋼 鋼 鋼.
2. 鋼 鋼 鋼 鋼 鋼 鋼 鋼 鋼.
3. 鋼 鋼 鋼 鋼 鋼 鋼 鋼 鋼 鋼 鋼 鋼 鋼.


鋼 鋼:

Fujian Nanan *boreway* Machinery Co.,Ltd.

 No.605 Huahui Center, Shuitou Town 362342 Quanzhou, 鋼 鋼

 鋼 : (+86) 595-86990206 /  鋼: (+86) 595-86990220

 鋼 / **WhatsApp / Wechat** : (+ 86) 13559599186

 鋼: boreway05@boreway.net

 鋼 鋼