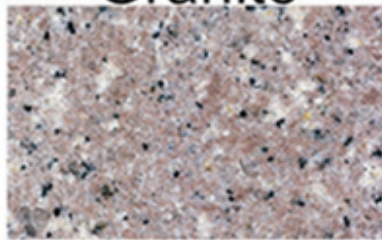


boreway® Multi size diamond wire saws

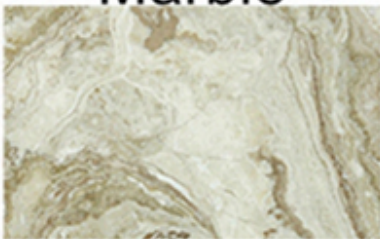


boreway® Applicable materials

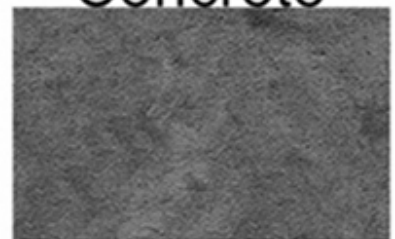
Granite



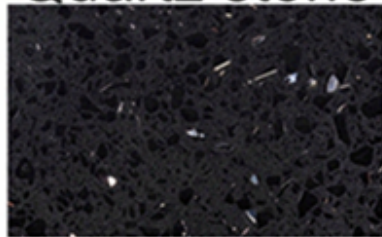
Marble



Concrete



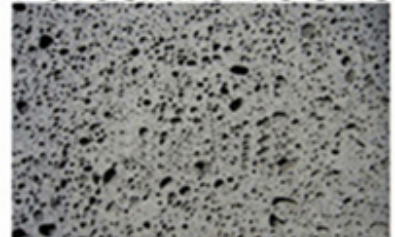
Quartz stone



Sandstone



Volcanic rocks



Bridge reconstruction



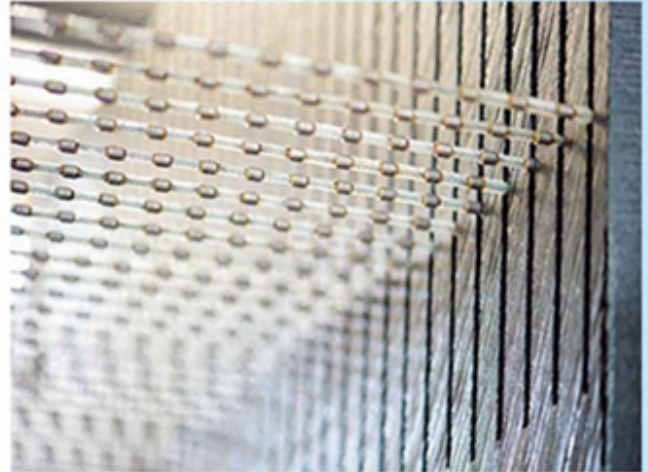
Road construction



Granite blocks



Marble blocks



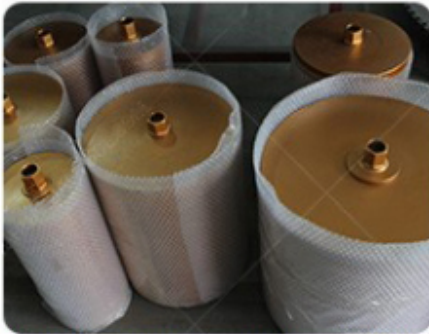
□□:

1. □□□□ □□ □□ □□□□□□.
2. □□□□ □□ □□□ □□□□□□.
3. □□ □□□ □□ □□□ □□ □□□ □□ □ □□□□. (

□□ □ □□ :

□□□□□ □□□ □□□ □□□□ □□□□ □□□
 ...□
 □□□ □□ □□□ □□ □□□ □□ □□□ □□ □ □□□□.

□□□ □□□ □□ □□□ □□ □□□□□□□.



□ □ □ :





☐☐☐☐:

Fujian Nanan *boreway*® Machinery Co.,Ltd.



No.605 Huahui Center, Shitou Town 362342 Quanzhou, Fujian, China.



☐☐ : (+86) 595-86990206 /



☐☐:(+86) 595-86990220



☐☐☐ / **WhatsApp** / **Wechat** :(+ 86) 18650679939.



☐☐☐: **boreway@boreway.com.**



Lyon Chang.