



12	300	40	3.0	8/10	21
14	350	40	3.2	8/10	25
16	400	40	3.6	8/10	28
18	450	40	4.0	8/10	32
20	500	40	4.2	8/10	36
24	600	40	4.6	8/10	42

300mm 300mm 40mm 3.0mm 8/10 21mm, 350mm 40mm 3.2mm 8/10 25mm, 400mm 40mm 3.6mm 8/10 28mm, 450mm 40mm 4.0mm 8/10 32mm, 500mm 40mm 4.2mm 8/10 36mm, 600mm 40mm 4.6mm 8/10 42mm.

300mm 40mm 3.0mm 8/10 21mm :

300mm 40mm 3.0mm 8/10 21mm :



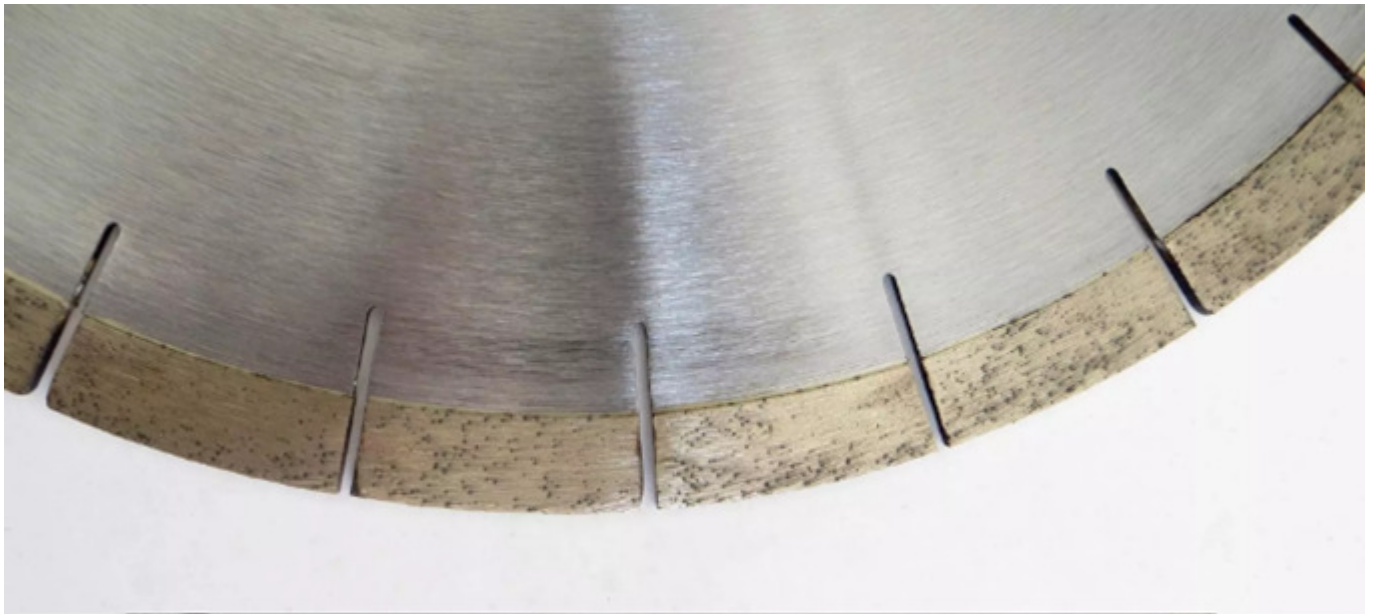
300mm 40mm 3.0mm 8/10 21mm :

300mm 40mm 3.0mm 8/10 21mm, 350mm 40mm 3.2mm 8/10 25mm, 400mm 40mm 3.6mm 8/10 28mm, 450mm 40mm 4.0mm 8/10 32mm, 500mm 40mm 4.2mm 8/10 36mm, 600mm 40mm 4.6mm 8/10 42mm.

## Applicable materials

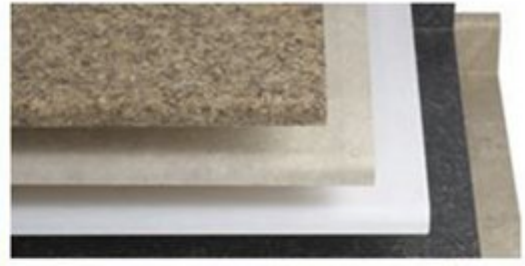
To meet your demands for cutting different materials, such as granite, marble, quartz stone, sand stone, microcrystalline stone, volcanic rock, concrete, glass, ceramic, masonry etc. Different segments recipe were been developed by our company.







□□ □□ :



□□ :

1. □□□□ □□□□ □□□ □□ □□.
2. □□□ □□ □□ □□.
3. □□ □□ □□, □□, □□□□ □ □□.

□□ □□:



Fan Shape Edge Segment



Normal Shape Edge Segment



W Shape Edge Segment



K Shape Block Segment



V Shape Block Segment



M Shape Block Segment



Slant Slot Edge Segment



Turbo Shape Edge Segment



U Slot Edge Segment

□□□ □□ :

□□□ □□□ □□ □□ □□□□ □□□ □□□□ :



□ □ □ □ :





**□□□ □□□:**

1. □□ □□ □□ : □□□ □□□ □□□ □□.
2. □□ □□ :□□ □□□□□□□ □ □□ □□□□□□□.
3. OEM □□ : □□□ □□ □□ □□□ □□ □□ □ □ □□□□.
4. □□ □□ : □□□ □□□ □□ □□ □□□□ □□□□. □□□□ □□ □□□ □□ □□□□.
5. □□ □□□ : □□□ □□ □□□ □□□□ □□□ □□ □□□ □□□□□ □□□□□.

**□□□□ □□:**

1. □□□ □□□□□ □□□□□ □□ □□□ □□□ □□ □ □ □□□□?  
 □□ □□□ □□□□□ □□□□□ □□□ □□□ □□□ □□ □ □ □□□ □□□□ □□□ □□ □□□□. □□□ □□ □□□ □□□ □□ □□ □□ □□ □ □□ □ □□□ □□□□.
2. □□□□□ □□□□□ □□□ □□ □□□ □□□□□□□□□?  
 □□ □□ □□□ □□ □□□ □□□ □□□□□□□.

- 1). 轉速 RPM.
- 2). 轉速與轉矩的關係 (轉速 : 轉矩的關係)。
- 3). 轉速與轉矩的關係?

**3. 轉速與轉矩的關係?**

轉速與轉矩的關係。轉速與轉矩的關係。

轉速 :

轉速與轉矩的關係。轉速與轉矩的關係。轉速與轉矩的關係。轉速與轉矩的關係。轉速與轉矩的關係。


轉速:

## Fujian Nanan *boreway* Machinery Co.,Ltd.

 No.605 Huahui Center, Shuitou Town 362342 Quanzhou, 中國

 電話 : (+86) 595-86990206 /  電話: (+86) 595-86990220

 手機 / **WhatsApp** / **Wechat** : (+ 86) 13559599186

 郵箱: [boreway06@boreway.net](mailto:boreway06@boreway.net)

 人員