

□□ :

108□ □□ Boreway 1600mm □□□□ □□ □□□□ □□ □□ :



□□ □□ □□□□ □□ □□ □□ □□ □□ □□□□ □□ □□□ 24 * 9.0 * 15mm□□ □□ 1600mm □□□□ □□□ □ □□□□.

□□□ □□□ □□ □□ □□ □ □□ □□ □□ □ □□ □□□□ □□ □ □□ □□ □□ □□□□, □□□□□ □□ □ □□ □□□ □□□□□, □□□ □□ □□□ □ □□□□.

□□□ □□□□□ □□□□□ □□ □□ □□□ □□ □□□□□!

□□□□:

□□□ □□□ □□□□ □□□ □□□□ □ □□□ □□□□□□□□
□□□ □□□□ □□ □□ □□□□ □□□□□□.

| 1000-3500 mm □□□ □□□□ □□□□ □□ | | | | | |
|-------------------------------|------|----------|-----------|-------|----|
| □□ | □□ | □□□□□ □□ | | | □□ |
| □□ | mm | □□ | □□ | □□ | □□ |
| 40 | 1000 | 24 | 7.4 / 6.8 | 15 | 70 |
| 44 | 1100 | 24 | 7.4 / 6.8 | 15 | 74 |
| 48 | 1200 | 24 | 7.5 / 7.0 | 15/20 | 80 |

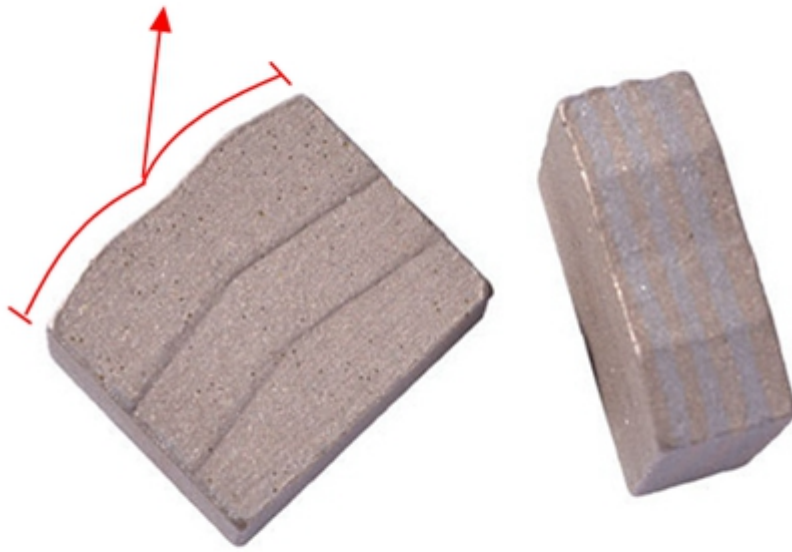
| | | | | | |
|-----|-----------|----|----------------|----------|-----|
| 52 | 1300 | 24 | 8.0 / 7.4 | 15/20 | 88 |
| 56 | 1400 | 24 | 9.0 / 8.4 | 15/20 | 96 |
| 64 | 1600 □ | 24 | 9.0 / 8.4 | 15/20 | 108 |
| 72 | 1800 | 24 | 10 / 9.0 | 15/20 | 120 |
| 80 | 2000 □ | 24 | 10.6 / 9.8 | 15/20 | 128 |
| 88 | 2200 | 24 | 11.5 / 10.5 | 15/20 | 136 |
| 100 | 2500 | 24 | 11.8 / 10.8 | 15/20 | 140 |
| 120 | 3000 | 24 | 13.0 / 12 | 15/20 | 160 |
| 140 | 3500 | 24 | 13.5 / 12.5 | 15/20/30 | 180 |

Boreway 1600mm □□□□ □ □□□ □□ □□ 108 □□□
□□□ □□□ □□ □□□ □□□□□□□□. □□ □□□ □□ □□□ □□ □□□□.

□□ □□ □□ :

108 □□ **Boreway 1600mm** □□□□ □□□ □□□ □□ □□ :

M shape Sandwich, Good debris removal and better cooling



□□ :

108 □□ Boreway 1600mm □□□□ □□ □□□□ □□ □□. □□□, □□, □□□ □□□ □□ □□ □□.

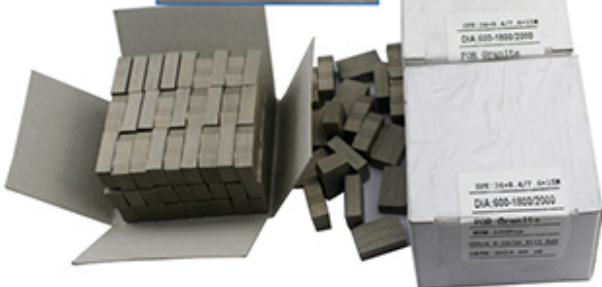
Applicable materials

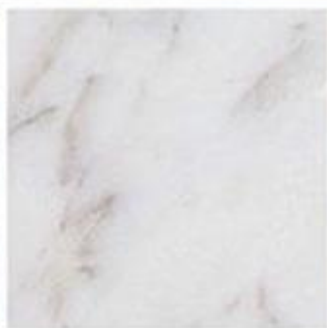
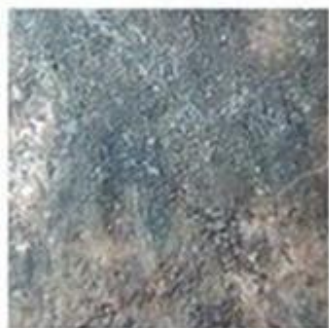
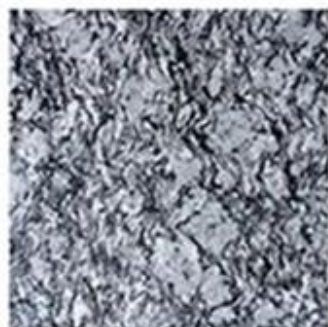
To meet your demands for cutting different materials, such as granite, marble, quartz stone, sand stone, microcrystalline stone, volcanic rock, concrete, glass, ceramic, masonry etc. Different segments recipe were been developed by our company.

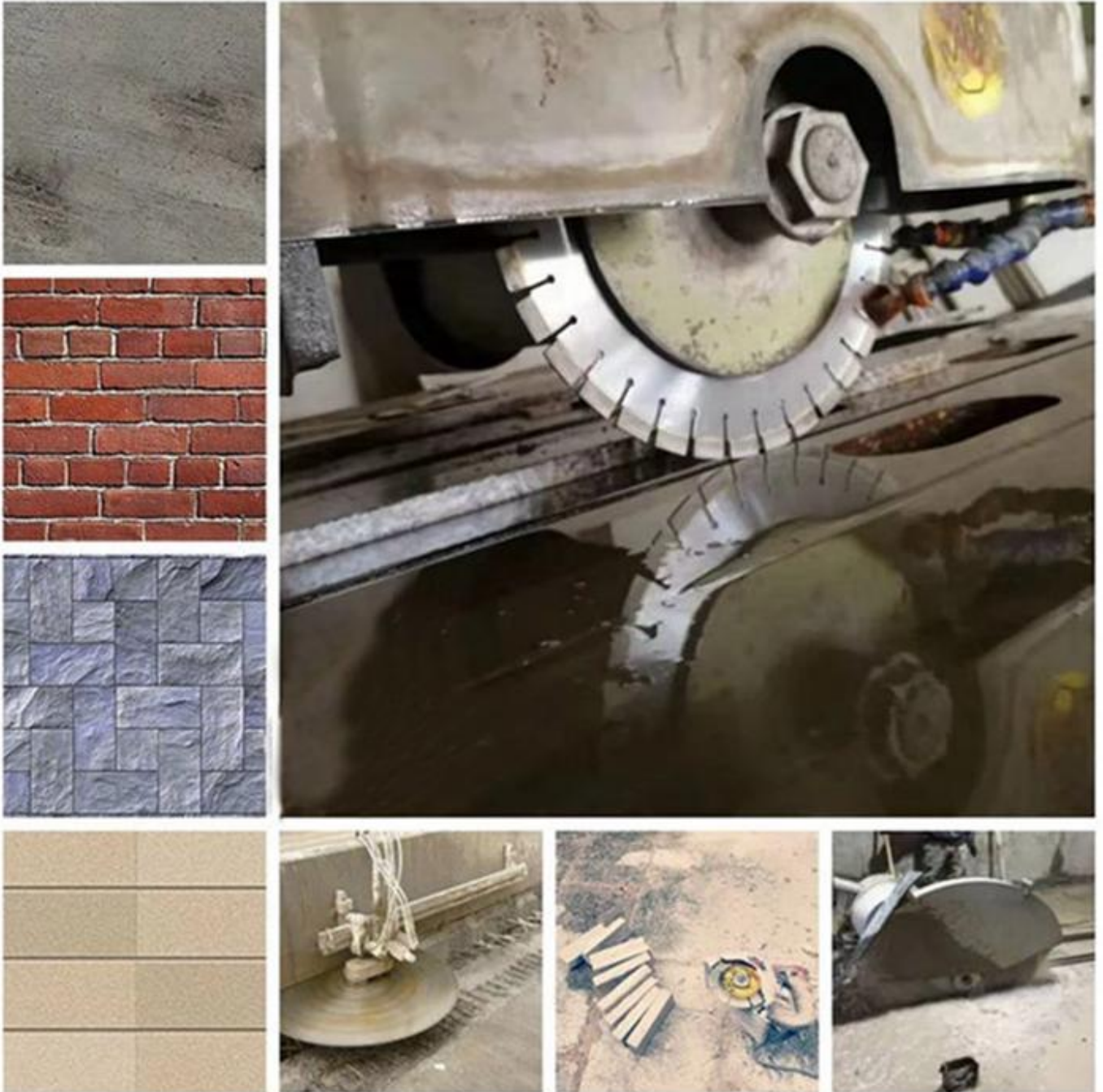




SPK: 24*8.4/7.6*15M
DIA: 600-1800/2000
FOR Granite
NUM: 100Pcs
SD604 6-18/20 U115 K45
DATE: 2013.03.26







□□ :

1. □□□□ □□□□ □□□ □□ □□.
2. □□□ □□ □□ □□.
3. □□ □□ □□, □□, □□□□ □ □□.

□□ □□:



□□ □□ :

□□ □□ □□ □□ □□ □□ □□ □□ :



□□ □□ □□ :

- 1. Tools;
- 2. 零件 或 材料 或 零件 材料.

Less than 45kg, generally delivery by express(Door to Door).



By Air or by Sea for batch goods, Airport/ Port receiving

By air



By sea



零件 材料:

1. 零件 材料 : 零件 材料 零件 材料.
2. 零件 材料 : 零件 材料 零件 材料 零件 材料.
3. OEM 零件 : 零件 材料 零件 材料 零件 材料.
4. 零件 材料 : 零件 材料 零件 材料 零件 材料. 零件 材料 零件 材料 零件 材料.
5. 零件 材料 : 零件 材料 零件 材料 零件 材料 零件 材料 零件 材料.

零件 材料:

1. 零件 材料 零件 材料 零件 材料, 零件 材料 零件 材料 零件 材料?
零件 材料 零件 材料 零件 材料. 零件 材料 零件 材料
零件 材料 零件 材料 零件 材料. 零件 材料 零件 材料

በጊዜ ላይ 8 ሰዓት ለሰዓት ለሰዓት.

2. የገንዘብ ጥያቄ ምን ዓይነት ነው?

የገንዘብ ጥያቄ ለማግኘት የሚያስፈልጉትን ገንዘብ ለማግኘት ለሚችሉት ገንዘብ ጥያቄ ይገኛል.

የገንዘብ ጥያቄ ለማግኘት የሚያስፈልጉትን ገንዘብ ለማግኘት ለሚችሉት ገንዘብ ጥያቄ ይገኛል.

የገንዘብ ጥያቄ ለማግኘት የሚያስፈልጉትን ገንዘብ ለማግኘት ለሚችሉት ገንዘብ ጥያቄ ይገኛል.

የገንዘብ ጥያቄ ለማግኘት የሚያስፈልጉትን ገንዘብ ለማግኘት ለሚችሉት ገንዘብ ጥያቄ ይገኛል.

3. የገንዘብ ጥያቄ ለማግኘት የሚያስፈልጉትን ገንዘብ ለማግኘት ለሚችሉት ገንዘብ ጥያቄ ይገኛል?

በጊዜ ላይ ገንዘብ ጥያቄ ለማግኘት የሚያስፈልጉትን ገንዘብ ለማግኘት ለሚችሉት ገንዘብ ጥያቄ ይገኛል.

በጊዜ ላይ ገንዘብ ጥያቄ ለማግኘት የሚያስፈልጉትን ገንዘብ ለማግኘት ለሚችሉት ገንዘብ ጥያቄ ይገኛል.

በጊዜ ላይ ገንዘብ ጥያቄ ለማግኘት የሚያስፈልጉትን ገንዘብ ለማግኘት ለሚችሉት ገንዘብ ጥያቄ ይገኛል.

በጊዜ ላይ ገንዘብ ጥያቄ ለማግኘት የሚያስፈልጉትን ገንዘብ ለማግኘት ለሚችሉት ገንዘብ ጥያቄ ይገኛል.

የገንዘብ ጥያቄ :

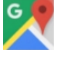
የገንዘብ ጥያቄ ለማግኘት የሚያስፈልጉትን ገንዘብ ለማግኘት ለሚችሉት ገንዘብ ጥያቄ ይገኛል.


የገንዘብ ጥያቄ ለማግኘት የሚያስፈልጉትን ገንዘብ ለማግኘት ለሚችሉት ገንዘብ ጥያቄ ይገኛል.

የገንዘብ ጥያቄ!

የገንዘብ ጥያቄ :

Fujian Nanan *boreway* Machinery Co.,Ltd.

 No.605 Huahui Center, Shuitou Town 362342 Quanzhou, ምን ምን

 ስልክ : (+86) 595-86990206 /  ምን : (+86) 595-86990220

 ምን / **WhatsApp / Wechat** : (+ 86) 13559599186

 ምን: boreway06@boreway.net

 ምን ምን