

Boreway 鋼 鋼 鋼 鋼 鋼鋼鋼鋼 鋼鋼鋼 鋼 鋼 鋼鋼鋼 鋼

鋼:

鋼鋼 鋼鋼鋼 鋼鋼鋼 鋼 鋼 鋼鋼鋼 鋼鋼鋼 :

鋼	鋼	鋼	鋼					
鋼	mm	鋼 (mm / inch)	鋼 (mm)	鋼 (mm)				
4.5	115	22.23	1.4	4	105	20	1.4	10
5	125	22.23	1.4					
9	230	22.23	2.0					

鋼 鋼鋼 鋼 鋼 鋼鋼 鋼鋼 鋼鋼 鋼 鋼 鋼鋼 鋼鋼 鋼 鋼鋼鋼.

鋼 = 鋼 鋼 = 鋼 鋼 = 鋼 鋼 = OEM

# Support Sample Processing Customization

## Style and Specifications



### Contact Salesman

Due to the large number of product specifications and styles, in order to avoid conflicts, please contact the salesman before placing the order.

1

### Provide Samples

The manufacturer supports the sample processing and customization, and the buyer provides the sample first to communicate the production requirements.



2



## Mail Samples

According to the buyer's demand for proofing, the manufacturer needs the buyer to pay the proofing fee first, and the sample fee will be returned after the order is concluded.

3

## Generate Order

The buyer receives the sample. If satisfied, place an order for batch production. After confirming the receipt, contact the salesman to return the proofing cost.



4

□□□□ □□ :

1. □□□ □□□□ □□ □□□ □□□ □□ □ □□ □□□□□□□□□□.  
□□□ □□□ □ □□□ □□□ □□□ □□□□□□□□□□  
□□ □□□ □□ □ □□□□ □□ □□□ □□ □ □□□□ □□□□□□□□□□.
2. □□□ □□ □□ □ □□□ □□□□ □□□□
3. □□□ □□□□ □□ □□, □□ □□ □ □□□, □□ □□□ □□□□□□□□□□, □□□ □□ □□□□ □□□□, □□□ □□ □□□□□□□□□□.
4. □□ □□□□ □□ □□□ □□□□□□



1. □□□, □□□□ □□□ □□□, □□ □□ □ □□□ □□□□ □□ □□□ □ □□ □□□□□□.

2. 我们的工厂，使用原始，高品质，高纯度的金刚石

3. 我们的工厂使用高品质的金刚石，而不是从废料中选择的低品质金刚石。

4. 我们的工厂使用高品质的金刚石，而不是从废料中选择的低品质金刚石。

**Our factory** use original high grade diamond



pk

**Other factory** mix second diamond selected from waste segment

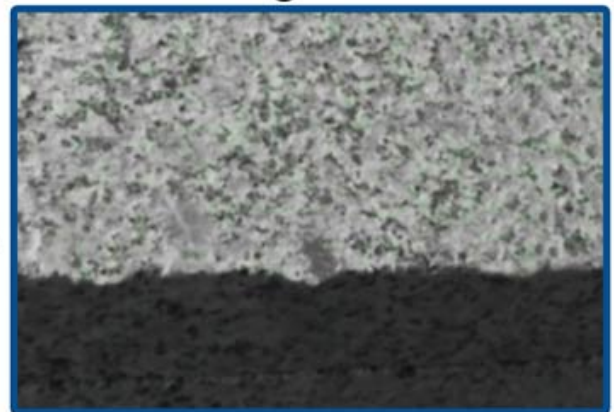


**Our blade** cutting effect



pk

**Other supplier** blade cutting effect



□□ :

我们的工厂使用高品质的金刚石，而不是从废料中选择的低品质金刚石。



Wall Cutting



Concrete With Rebar Cutting



Road Cutting



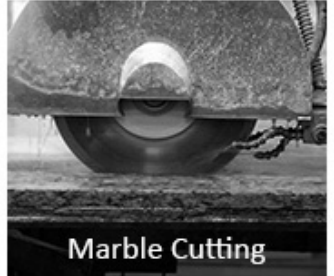
Hard Stone Cutting



Hard Granite Cutting



Ceramic Porcelain Cutting



Marble Cutting

□□ □□, □□ □□ □□ □□!



Porcelain tile



Ceramic



Engineered stone

□□ □□ :

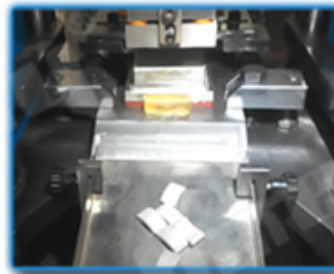
□□□□ □□ □□ □□□□ □□□□ □□□□ ...□ □□ □□ □□□□, □□ □, □□ □, □□□ □

□□ □□ :





● Cold Press Mschine



● Fill The Mold



● The Product Polishing



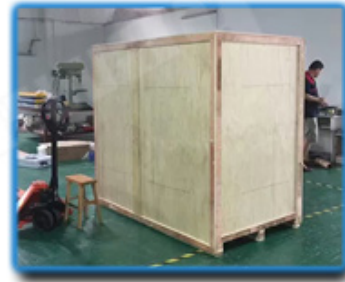
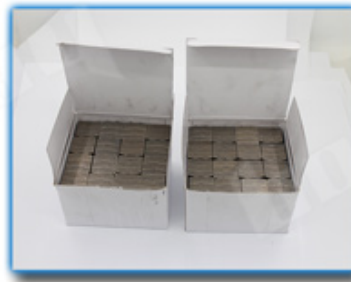
● Hot Press Machinery



● Remove The Mold



● Packing



□ □ □ :

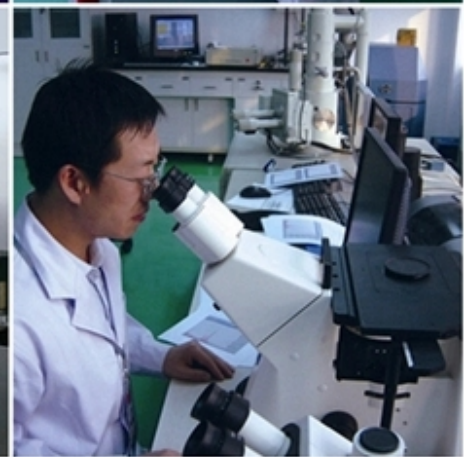


Boreway Machinery Co.,Ltd  
www.diamondtools.top  
www.boreway.net



Boreway Machinery Co.,Ltd  
www.diamondtools.top  
www.boreway.net

000 00 :





□□ □ □ □ :

□□:

1. □□ □□ □□ □□

□□ □□□□ 2.By □□ / □□, □□ / □□ □□

3. 45 □□□□, □□□□ □□ □□□□ (□)

4. □□□ □□ □ □□ □□ □□□□.





**□□□ □□□:**

1. □□ □□ □□ : □□□ □□□ □□□ □□.
2. □□ □□ :□□ □□□□□□□ □ □□ □□□□□□□.
3. OEM □□ : □□□ □□ □□ □□□ □□ □□ □ □ □□□□.
4. □□ □□ : □□□ □□□ □□ □□ □□□□ □□□□. □□□□ □□ □□□ □□ □□□□.
5. □□ □□□ : □□□ □□ □□□ □□□□ □□□ □□ □□□ □□□□□ □□□□□□.

**□□□□ □□:**

1. □□□ □□□ □□□ □□□□ □□ □□□, □□□ □□□ □□□ □□ □□□□?  
 □□ □□□□ □□□□□ □□□ □ □ □□□□. □□□, □□□ □□ □□□□ □□□□ □□ □□ □□□□ □□ □□ □□□ □□□□□. □□□ 8 □ □□□ □□ □□□ □□ □□□□□ □□ □□□□□□□.
2. □□□ □□ □□□ □□?  
 □□□ □□ □□□ □□□□ □□□□. □□□□ □□□ □□□□ □□□ □□□ □□□ □□ □□□ □□ □□□□ □□□□. □□□ □□□□□□ □□□ □ □□ □□□ □□□ □ □□□□ □ □□□□. □□□ □□ □□□□ □□□ □□ □□□ □□ □ □□□□□□□□□. □□□ □□ □□□ □□□□□□.
3. □□□□ □□□ □□□ □□□□□?  
 □□, □□□ □□□ □□□ □□□□□□. □□ □□, □□ □□ □□ □□□□ □□ □ □□□ □ □□ □□□□ □□□ □□□ □□ □□□□. □□□ □□□ □□ □□□ □□□ □□□ □□□, □□□□ □□□ □□□□□. □□□□ □□□□ □□□□ □□□ □□□ □□□ □ □□□□. □□□ □□□ □□□ □□ □□□□ □ □□□□ □ □□□□□ □ □□□□□.

☎ :

歡迎各界人士垂詢。本公司備有各種型號之機器。價格公道。歡迎各界人士垂詢。本公司備有各種型號之機器。價格公道。歡迎各界人士垂詢。

☎☎☎:

Fujian Nanan **boreway** Machinery Co.,Ltd.



No.605 Huahui Center, Shuitou Town 362342 Quanzhou, 中國



☎ : (+86) 595-86990206 /  ☎: (+86) 595-86990220



☎ / **WhatsApp** / **Wechat** : (+ 86) 18650679939



☎☎: **boreway@boreway.com**



☎ ☎