



**Our factory** use original high grade diamond



**Other factory** mix second diamond selected from waste segment

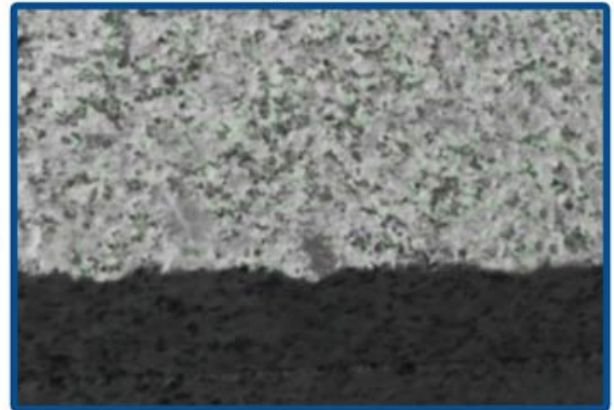


pk

**Our blade** cutting effect



**Other supplier** blade cutting effect



pk

□□:

□□□ □□ □□□□□□□□ □□□ □□□□ □□ □ □□□ □□ □□□□□ □□ □□:

diame□□	□□	□□	□□	□□
□□	mm	□□ (mm/inch)	□□ (mm)	□□ (mm)
4.5	115	22.23	1.4	10
5	125	22.23	1.4	10
9	230	22.23	2.0	10

4	105	20	1.4	10
---	-----	----	-----	----

□□ □□□ □□ □□□ □ □□□□ □□ □□□ □□□ □□ □□□ □ □□□□.

□□ = □□ □□ = □□ □□ = □□ □□ = OEM

# Support Sample Processing Customization

## Style and Specifications



### Contact Salesman

Due to the large number of product specifications and styles, in order to avoid conflicts, please contact the salesman before placing the order.

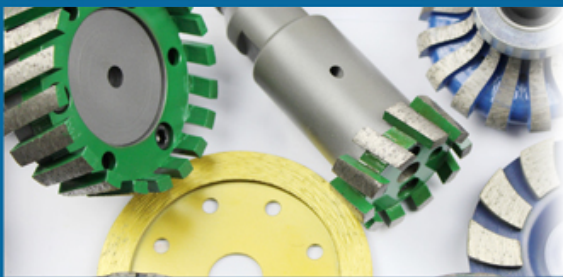
1

### Provide Samples

The manufacturer supports the sample processing and customization, and the buyer provides the sample first to communicate the production requirements.



2



### Mail Samples

According to the buyer's demand for proofing, the manufacturer needs the buyer to pay the proofing fee first, and the sample fee will be returned after the order is concluded.

3

### Generate Order

The buyer receives the sample. If satisfied, place an order for batch production. After confirming the receipt, contact the salesman to return the proofing cost.



4

□□□□ :

1. □□□ □□□□ □□ □□□ □□□ □□□ □□□ □□□□□□□□□□.  
□□□ □□□ □ □□□ □□□ □□□ □□□□□□□□□□.  
□□ □□ □□ □ □□□□ □□ □□□ □□ □ □□□□ □□ □□□□□□□□□□.
2. □□ □□□□ □□ □ □□□ □□□□ □□□□□.
3. □□ □ □ □□□□ □□ □□, □□ □□ □ □□, □□ □□□ □□□□□□□□□□. □□ □□□ □□ Earplug, Mask □□ □□□□□□□□.
4. □□ □□□□ □□ □□□ □□□□□□□□

□□ □□□□ :



Porcelain tile



Ceramic



Engineered stone

이러한 재료들은 각각의 장단점을 가지고 있으며, 사용처와 환경에 따라 적합한 재료를 선택하는 것이 중요합니다.

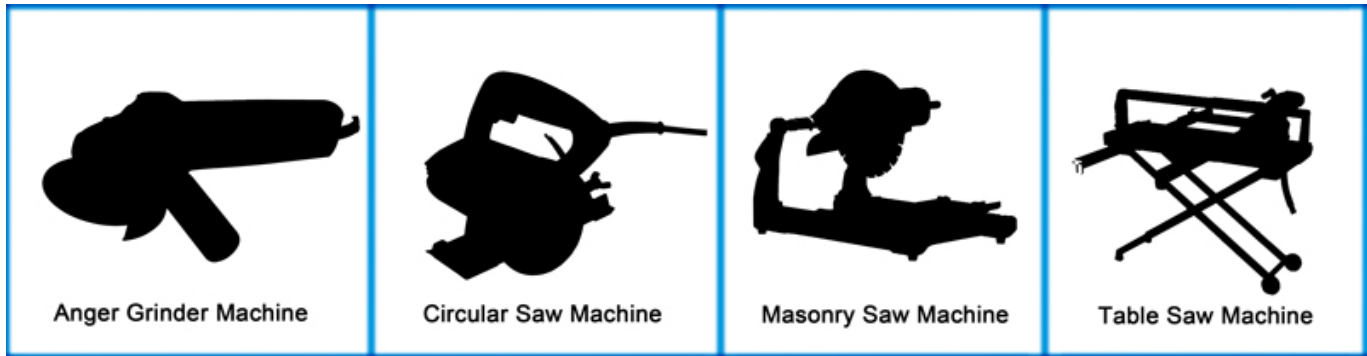
예를 들어, 욕실에서는 내수성이 뛰어난 세라믹이 적합하며, 주방에서는 내열성이 뛰어난 엔지니어링 스톤이 적합합니다.

참고 사항 :



이러한 재료들은 각각의 장단점을 가지고 있으며, 사용처와 환경에 따라 적합한 재료를 선택하는 것이 중요합니다.

예를 들어, 욕실에서는 내수성이 뛰어난 세라믹이 적합하며, 주방에서는 내열성이 뛰어난 엔지니어링 스톤이 적합합니다.



□□ □□:



Boreway Machinery Co., Ltd.  
www.diamondtools.top  
www.boreway.com

5. □□ T- □□□□ □□□□ □□□□ □□□□



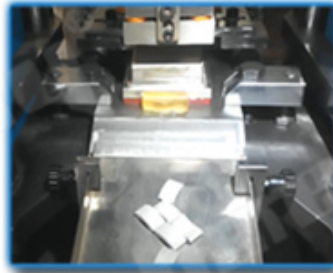
Boreway Machinery Co., Ltd.  
www.diamondtools.top  
www.boreway.com

□□ □□□□ □□□□ □□□□

□□□ □□ :



● Cold Press Mschine



● Fill The Mold



● The Product Polishing



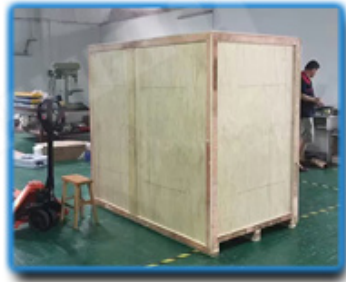
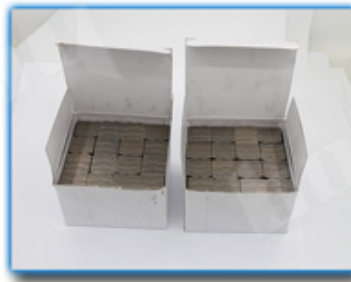
● Hot Press Machinery



● Remove The Mold



● Packing







□□ □ □ □ :

□□:

1. □□ □□□□ □□
2. □□ □□□□□ □□/□□, □□/□□ □□
3. 45kg □□, □□□□□ Express (Door to Door)□ □□ □□
4. □□□ □□ □ □□ □□ □□□□ □□□□.





**□□□ □□□:**

1. □ □□ □□ : □□□ □□ □□□ □□ □ □□□□.
2. □□ □□ : □□□□□ □□ □□□□□ □ □□□□□□□.
3. OEM □□ : □□□□ □□□ □□ □□□ □ □□□□.
4. □□□ □□ : □□□ □□ □□ □□□□ □□□□. □□□□ □□ □□□ □□□□□.
5. □□ □□□ : □□□ □□□ □□ □□□ □□□□ □□□□ □□□ □□□□□.

**□□□□ □□:**

1. □□□ □□□□□ □□□ □□□ □□□ □ □□□□?  
 □□ □□□ □□□ □ □□ □□□ □□ □□□□. □□□□ □□□ □□ □□□□ □□□□ □□□ □□□ □□ □□ □□□ □□□□. □□□□ 8 □ □□ □ □□ □□□ □□ □□□□□ □□ □□□□□□□.
2. □□□ □□□ □□ □ □□□□?  
 □□□ □□ □□□ □□□□ □□□□. □□□□ □□□ □□□□ □□□ □□□ □□ □□□ □□ □□□ □□□□ □□□□. □□□ □□□□□□ □□□ □□□ □□□ □□□ □ □□ □□ □□□□. □□□ □□ □□□□ □□□ □□□ □□ □ □□□□□□□□□. □□□□ □□□□□□ □□ □ □□□□, □□□ □□□ □□ □ □□□□.
3. □□□ □□□ □□□ □□□□□?  
 □□, □□□ □□□ □□□ □□□□□□. □□□ □□, □□ □□ □□ □□□□ □□□ □□□ □ □□ □□□□ □□□ □□ □□□□. □□□ □□□ □ □□□ □□□ □□□ □□□ □□□ □□□□□. □□□□ □□□□ □□□ □□□ □□□ □□ □□□□.

我們提供各種機械設備及零件。

☎️ :

我們提供各種機械設備及零件，價格公道，品質優良，歡迎各界人士垂詢。如有需要，請洽我們！

📩:

# Fujian Nanan *boreway*<sup>®</sup> Machinery Co.,Ltd.

 No.605 Huahui Center, Shuitou Town 362342 Quanzhou, Fujian, China

 ☎️ : (+86) 595-86990206 /  ☎️: (+86) 595-86990220

 📱 / **WhatsApp / WeChat** : (+ 86) 18650679939

 📧: **boreway@boreway.com**

 👤 **Lyon Chang**