

Our factory use original high grade diamond



pk

Other factory mix second diamond selected from waste segment

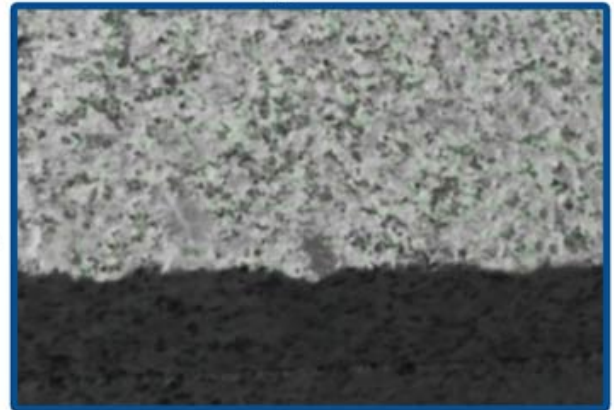


Our blade cutting effect



pk

Other supplier blade cutting effect



□□:

□□□ □□□□ □□□□ 9 □□□ □□ □□ □□ □□ □□ □□ □□□□□□ : □□□□□□□□

□□	□□	□□	□□	□□
□□	mm	□□ (mm / inch)	□□ (mm)	□□ (mm)
4.5	115	22.23	1.4	10
5	125	22.23	1.4	10
9	230	22.23	2.0	10

□□ □□□ □□ □□ □□□ □□□ □□□ □□ □□ □□□ □□□ □□ □□□□.

□□ = □□ □□ = □□ □□ = □□ □□ = OEM

□□□□□ □□ :

1. □□□ □□□□ □□ □□□ □□□ □□□ □□ □ □□ □□□ □□□□□□□□. □□□ □□□ □ □□□ □□□ □□□ □□□□□ □□□□□□□□□□ □□ □□□ □□ □ □□□□ □□ □□□ □□ □ □□□□ □□□□□□□□.
2. □□□ □□ □□ □ □□□ □□□□ □□□□.
3. □□□ □□□□ □□ □□, □□ □□ □ □□□, □□ □□□ □□□□□□□, □□□ □□ □□□□ □□□, □□□ □□ □□□□□□□□.
4. □□ □□□□ □□ □□□ □□□□□□

Support Sample Processing Customization

Style and Specifications



Contact Salesman

Due to the large number of product specifications and styles, in order to avoid conflicts, please contact the salesman before placing the order.

1

Provide Samples

The manufacturer supports the sample processing and customization, and the buyer provides the sample first to communicate the production requirements.



2

Mail Samples

According to the buyer's demand for proofing, the manufacturer needs the buyer to pay the proofing fee first, and the sample fee will be returned after the order is concluded.

3

Generate Order





The buyer receives the sample. If satisfied, place an order for batch production. After confirming the receipt, contact the salesman to return the proofing cost.



4



9 角角 角角 角角 角角 角角 角角 角角 角角 角角 ... 角角 角角 角角角角, 角角 角, 角角 角, 角角 角

 <p>Anger Grinder Machine</p>	 <p>Circular Saw Machine</p>	 <p>Masonry Saw Machine</p>	 <p>Table Saw Machine</p>
--	---	---	--

角角 角角 :



□□ :

9 □□ □□ □□ □□ □□ □□ □□□□□□ □□ □□, □□□ □□, □□ □□□ □ □□ □□□ □□



Wall Cutting



Concrete With Rebar Cutting



Road Cutting



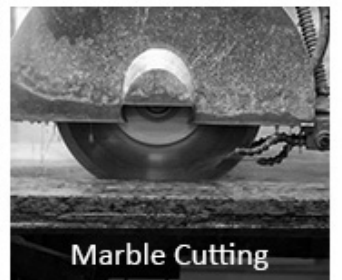
Hard Stone Cutting



Hard Granite Cutting



Ceramic Porcelain Cutting



Marble Cutting

□□ □□, □□ □□ □□ □□!



Porcelain tile



Ceramic



Engineered stone

□□ □□:



Boreway Machinery Co., Ltd.
www.diamondtools.top
www.boreway.com

5.00.T.0000.00.00000.0000



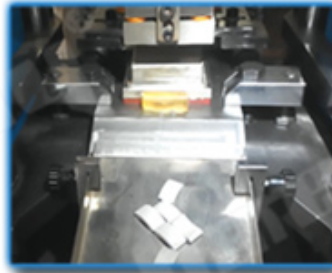
Boreway Machinery Co., Ltd.
www.diamondtools.top
www.boreway.com

□□.□□.00000.0000

□□□ □□ :



● Cold Press Mschine



● Fill The Mold



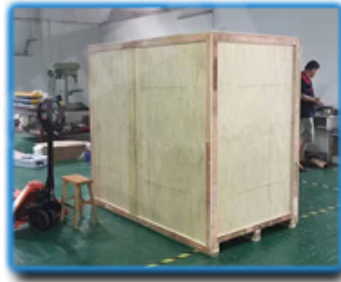
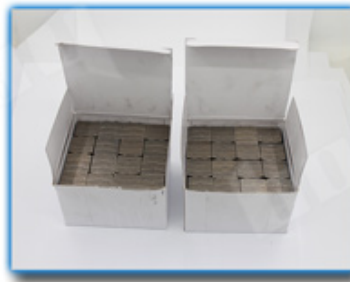
● The Product Polishing



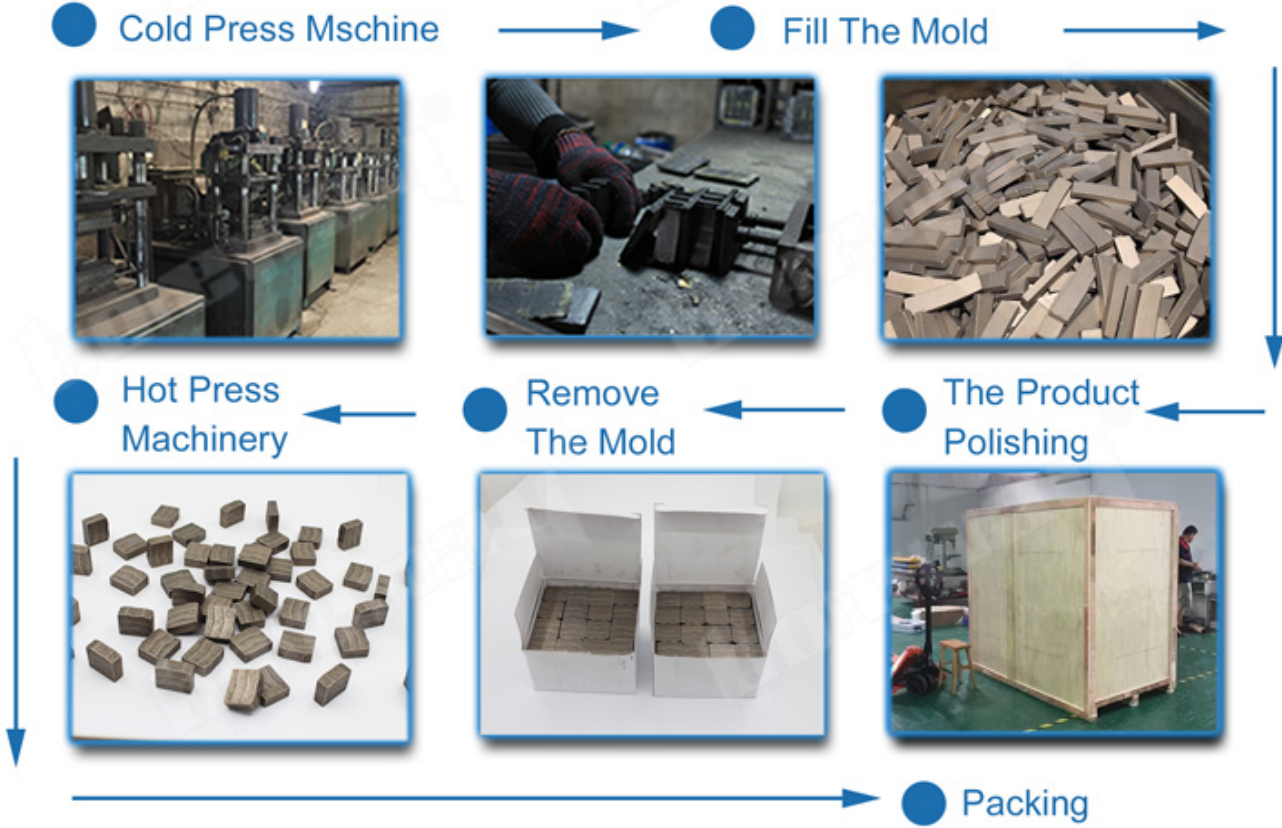
● Remove The Mold

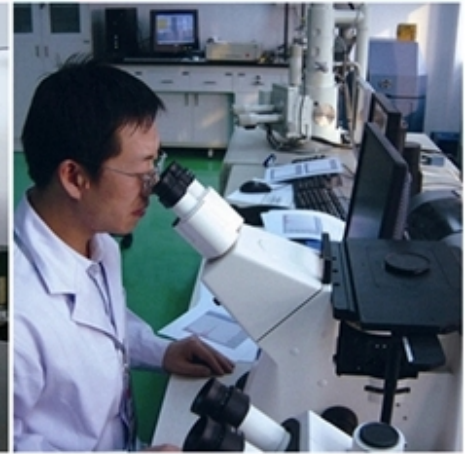


● Hot Press Machinery



● Packing







□□ □ □ □ :

□□:

1. □□ □□ □□ □□

□□ □□□□ 2.Air / Sea, □□ / □□

3. 45 □□□□, □□□□ □□ □□□□ (□)

4. □□□ □□ □ □□ □□□□ □□□□□.



□□□ □□□:

1. □□ □□ □□ : □□□ □□□ □□□ □□.
2. □□ □□ :□□ □□□□□□□ □ □□ □□□□□□□.
3. OEM □□ : □□□ □□ □□ □□□ □□ □□ □ □ □□□□.
4. □□ □□ : □□□ □□□ □□ □□ □□□□ □□□□. □□□□ □□ □□□ □□ □□□□.
5. □□ □□□ : □□□ □□ □□□ □□□□ □□□ □□ □□□ □□□□□ □□□□□.

□□□□ □□:

1. □□□ □□□ □□□ □□□□ □□ □□□, □□□ □□□ □□□ □□ □□ □□□□?
 □□ □□□□ □□□□□ □□□ □ □ □□□□. □□ □□□ □□ □□□□ □□□□ □□ □□ □□□□ □□ □□ □□□ □□□□. □□□ 8 □ □□□ □□ □□□ □□ □□ □□□□□ □□ □□□□□□□□.
2. □□□ □□ □□□ □□?
 □□□ □□ □□□ □□□□ □□□□. □□□□ □□□ □□□□ □□□ □□□ □□□ □□ □□□ □□ □□□□ □□□□. □□□ □□□□□□ □□□ □ □□ □□□ □□□ □ □□□□ □ □□□□. □□□ □□ □□□□ □□□ □□ □□ □□□ □□ □ □□□□□□□□□. □□□ □□ □□□ □□□□□□□.
3. □□□□ □□□ □□□ □□□□□?
 □□, □□□ □□□ □□□ □□□□□□□. □□ □□, □□ □□ □□ □□□□ □□ □ □□□ □ □□ □□□□ □□□ □□□ □□ □□□□. □□□ □□□ □□ □□□ □□□ □□□ □□□, □□□□ □□□ □□□□□. □□□□ □□□□ □□□□ □□□ □□□ □□□ □□□ □ □□□□. □□□ □□□ □□□ □□ □□□□ □ □□□□.

☎ ☎ :

歡迎各界人士來廠參觀指導。 竭誠為廣大客戶服務。 竭誠為廣大客戶服務。 竭誠為廣大客戶服務。 竭誠為廣大客戶服務。 竭誠為廣大客戶服務。

☎☎☎:

Fujian Nanan **boreway**® Machinery Co.,Ltd.

 No.605 Huahui Center, Shuitou Town 362342 Quanzhou, 福建 泉州

 ☎ : (+86) 595-86990206 /  ☎ : (+86) 595-86990220

 ☎ / **WhatsApp / Wechat** : (+ 86) 18650679939

 ☎: **boreway@boreway.com**

 ☎ ☎