

Fickert140Mm



140MM

Model	Material	Dimensions
BW-DF-M140	Aluminum	36 / 46 / 60 / 80 / 100 / 120 / 140 / 180 / 240 / 320
BW-DF-M170	Aluminum	36 / 46 / 60 / 80 / 100 / 120 / 140 / 180 / 240 / 320

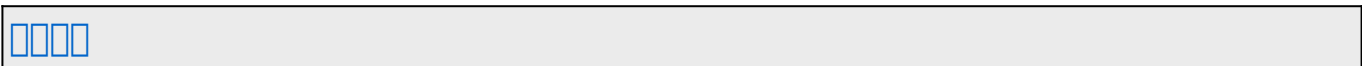
140mm 170mm

Material

36 / 46 / 60 / 80 / 100 / 120 / 140 / 180 / 240 / 320

Notes

1. Material
2. Material
3. Material 10
4. Material
5. Material



140MM

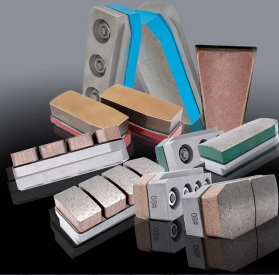
Fickert140MM

Material

140MM

Fickert Grinding Pads

Electricity saving: its sharpness can reduce the stress of grinding head, thereby reduce machine's abrasion.



Factory Price

Preferred Materials

Long Life

Excellent Gloss

Smooth Grinding

Stable Operation

Specification

Model	Description	Grit
BW-DF-M140	Metal Fickert	36#/46#/60#/80#/100#/120#/140#/180#/240#/320#
BW-DF-M170	Metal Fickert	36#/46#/60#/80#/100#/120#/140#/180#/240#/320#

Use



Stone Slab

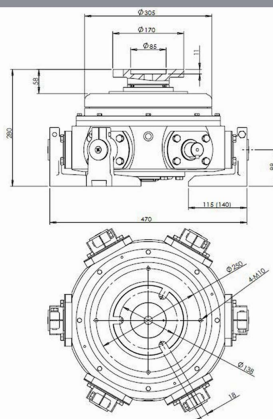


Artificial Slate



Quartz Slab

Application





□□□□□□

PS□

1. □□□□□□□□□□□□□□□□
2. □□□□□□□□□□/□□□□□/□□□□□□□□
3. 45kg□□□□□□□□□□□□□□□□□□□□□□
4. □□□□□□□□□□□□□□□□□□□□□□□□□□□□



Fujian Nanan *boreway* Machinery Co.,Ltd.



No.605 Huahui Center Shuitou Town 362342 Quanzhou Fujian China



TEL ☎ +86 595-86990206 /  ☎ +86 595-86990220



☎ / **WhatsApp / Wechat** ☎ + 86 18650679939



E ☎ boreway@boreway.com



☎