

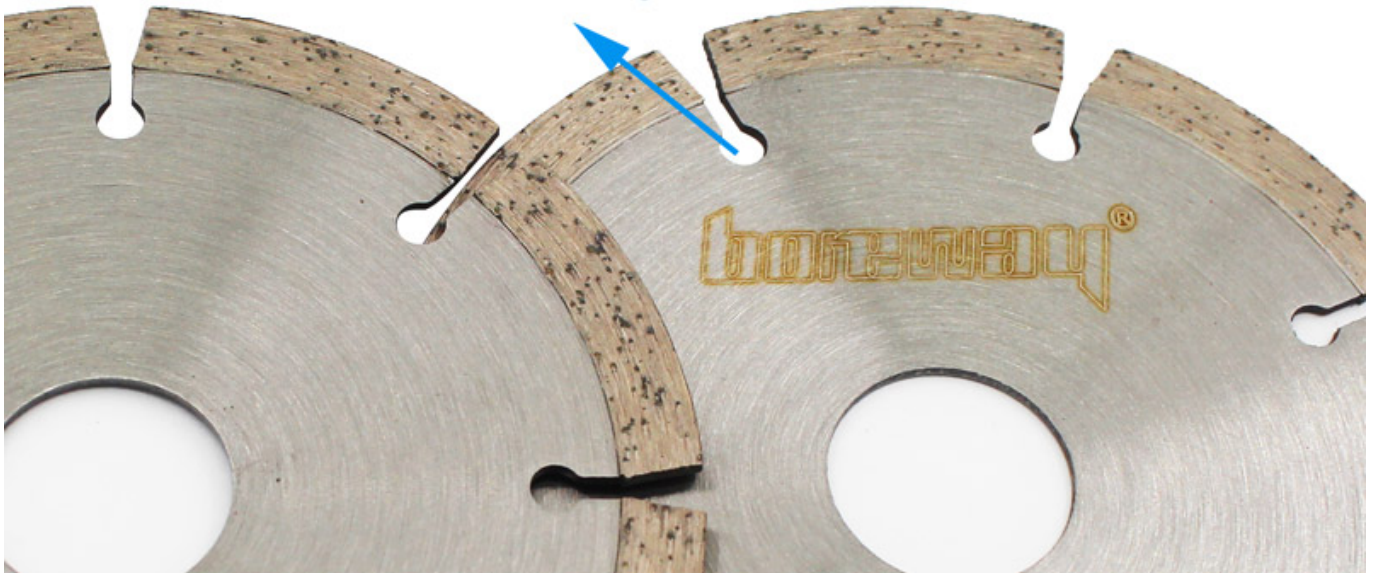
6. ការដំឡើងប្រព័ន្ធគ្រប់គ្រងសីតុណ្ហភាពប្រព័ន្ធប្រតិបត្តិការ

០០០

6. ការដំឡើងប្រព័ន្ធគ្រប់គ្រងសីតុណ្ហភាពប្រព័ន្ធប្រតិបត្តិការ

1. ការដំឡើងប្រព័ន្ធគ្រប់គ្រងសីតុណ្ហភាពប្រព័ន្ធប្រតិបត្តិការ
2. ការដំឡើងប្រព័ន្ធគ្រប់គ្រងសីតុណ្ហភាពប្រព័ន្ធប្រតិបត្តិការ
3. ការដំឡើងប្រព័ន្ធគ្រប់គ្រងសីតុណ្ហភាពប្រព័ន្ធប្រតិបត្តិការ
4. ការដំឡើងប្រព័ន្ធគ្រប់គ្រងសីតុណ្ហភាពប្រព័ន្ធប្រតិបត្តិការ

Ripple Key Slot



០០០

ការដំឡើងប្រព័ន្ធគ្រប់គ្រងសីតុណ្ហភាពប្រព័ន្ធប្រតិបត្តិការ

Our factory use original high grade diamond



Other factory mix second diamond selected from waste segment

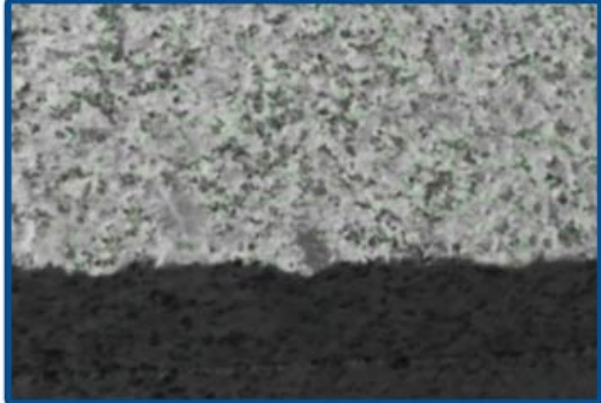


pk

Our blade cutting effect



Other supplier blade cutting effect



pk

3. 1. 2. 3. 4. 5. 6. 7. 8. 9. 10. 11. 12. 13. 14. 15. 16. 17. 18. 19. 20. 21. 22. 23. 24. 25. 26. 27. 28. 29. 30. 31. 32. 33. 34. 35. 36. 37. 38. 39. 40. 41. 42. 43. 44. 45. 46. 47. 48. 49. 50. 51. 52. 53. 54. 55. 56. 57. 58. 59. 60. 61. 62. 63. 64. 65. 66. 67. 68. 69. 70. 71. 72. 73. 74. 75. 76. 77. 78. 79. 80. 81. 82. 83. 84. 85. 86. 87. 88. 89. 90. 91. 92. 93. 94. 95. 96. 97. 98. 99. 100.

4. 1. 2. 3. 4. 5. 6. 7. 8. 9. 10. 11. 12. 13. 14. 15. 16. 17. 18. 19. 20. 21. 22. 23. 24. 25. 26. 27. 28. 29. 30. 31. 32. 33. 34. 35. 36. 37. 38. 39. 40. 41. 42. 43. 44. 45. 46. 47. 48. 49. 50. 51. 52. 53. 54. 55. 56. 57. 58. 59. 60. 61. 62. 63. 64. 65. 66. 67. 68. 69. 70. 71. 72. 73. 74. 75. 76. 77. 78. 79. 80. 81. 82. 83. 84. 85. 86. 87. 88. 89. 90. 91. 92. 93. 94. 95. 96. 97. 98. 99. 100.

5. 1. 2. 3. 4. 5. 6. 7. 8. 9. 10. 11. 12. 13. 14. 15. 16. 17. 18. 19. 20. 21. 22. 23. 24. 25. 26. 27. 28. 29. 30. 31. 32. 33. 34. 35. 36. 37. 38. 39. 40. 41. 42. 43. 44. 45. 46. 47. 48. 49. 50. 51. 52. 53. 54. 55. 56. 57. 58. 59. 60. 61. 62. 63. 64. 65. 66. 67. 68. 69. 70. 71. 72. 73. 74. 75. 76. 77. 78. 79. 80. 81. 82. 83. 84. 85. 86. 87. 88. 89. 90. 91. 92. 93. 94. 95. 96. 97. 98. 99. 100.

00=0000=00000000=0000= OEM

Support Sample Processing Customization

Style and Specifications



Contact Salesman

Due to the large number of product specifications and styles, in order to avoid conflicts, please contact the salesman before placing the order.

1

Provide Samples

The manufacturer supports the sample processing and customization, and the buyer provides the sample first to communicate the production requirements.



2



Mail Samples

According to the buyer's demand for proofing, the manufacturer needs the buyer to pay the proofing fee first, and the sample fee will be returned after the order is concluded.

3

Generate Order

The buyer receives the sample. If satisfied, place an order for batch production. After confirming the receipt, contact the salesman to return the proofing cost.



4

00000000

6. 1. 2. 3. 4. 5. 6. 7. 8. 9. 10. 11. 12. 13. 14. 15. 16. 17. 18. 19. 20. 21. 22. 23. 24. 25. 26. 27. 28. 29. 30. 31. 32. 33. 34. 35. 36. 37. 38. 39. 40. 41. 42. 43. 44. 45. 46. 47. 48. 49. 50. 51. 52. 53. 54. 55. 56. 57. 58. 59. 60. 61. 62. 63. 64. 65. 66. 67. 68. 69. 70. 71. 72. 73. 74. 75. 76. 77. 78. 79. 80. 81. 82. 83. 84. 85. 86. 87. 88. 89. 90. 91. 92. 93. 94. 95. 96. 97. 98. 99. 100.

000000000000



Porcelain tile



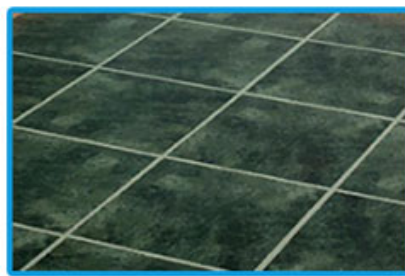
Ceramic



Engineered stone



Non Slip Tile



Floor Tile



Ceramic Tile



Concrete



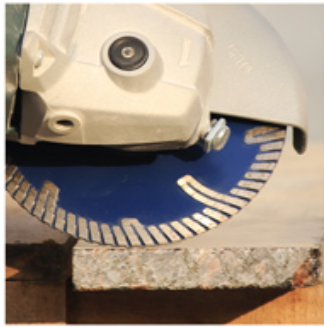
Granite



Marble



6□□□□□□□□□□□□□□□□ □□□□ □□□ □□□□□□□□□□□□□□□□□□□□□□



Boreway Machinery Co., Ltd
www.diamondtools.top
www.boreway.net



Boreway Machinery Co., Ltd
www.diamondtools.top
www.boreway.net







□□&□□□

PS□

1.□□□□□□□□□□□□□□□□

□□□□□□2.Air / Sea□□□□□□/□□□□□□

3.45kg□□□□□□□□□□□□□□□□□□□□

4.□□□□□□□□□□□□□□□□□□□□□□

