



1. 5 inch diameter

2. M14 bore

3. 20 teeth

4. 5 inch diameter

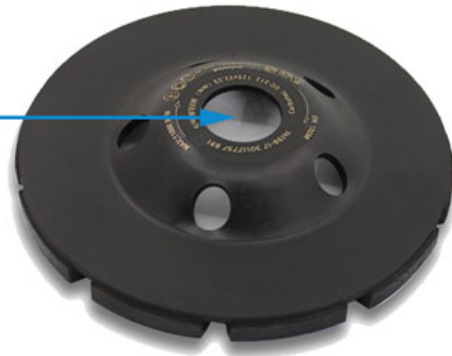
5. 5 inch diameter

6. 125mm diameter

Double Row Segment Cup Wheel

Bore: M14, 22.23, 5/8"-11

Process: Cold Pressed Sintered,
High-Frequency Welded



Segment No.: 20 Teeth



Diameter: 5 Inch (D125mm)

Application:
Suitable For Various Concrete Floors,
Masonry, Granite Marble and Some
Other Construction Material

Other available size: 4"/105mm , 4.5"/115mm , 5"/125mm , 7"/180mm)



 **Tel** ☐ +86☐595-86990206 /  ☐☐☐☐☐☐+86☐595-86990220

 ☐☐☐☐/ **WhatsApp** / **WECHAT**☐☐+ 86☐ 18650679939

 **E**☐☐☐☐ **boreway@boreway.com**

 **Lyon Chang**