

Boreway 40 1200 mm



40 /

1. Sharp

2.

3 **40**

4.

40

| | | | L | | | | W | | | | H | | | | RPM | | | |
|----|------|----------|----|----|----------|-------|--------|-----|--|--|---|--|--|--|-----|--|--|--|
| 48 | 1200 | 5.5[6.0] | 80 | 24 | 7.5[8.0] | 10/13 | 80/130 | 950 | | | | | | | | | | |

| Blade Set | Blade Diameter | Thickness | Segment Size | Cutting Stone |
|-------------|----------------|-----------|---------------------|---------------|
| # | # | mm | LxWxH | # |
| Multi Size | 2200-600 Multi | 4.5 | 24x6.4/5.6x13H(15H) | Granite |
| Multi Size | 2200-600 Multi | 5.0 | 24x7.0/6.2x13H(15H) | Granite |
| Multi Size | 2200-600 Multi | 5.5 | 24x7.4/6.6x13H(15H) | Granite |
| Multi Size | 2200-600 Multi | 6.5 | 24x8.4/7.6x13H(15H) | Granite |
| Multi Size | 2500-800 Multi | 5.5 | 24x7.4/6.6x13H(15H) | Granite |
| Multi Size | 2500-800 Multi | 6.5 | 24x8.4/7.6x13H(15H) | Granite |
| Multi Size | 2500-800 Multi | 7.2 | 24x9.2/8.4x13H(15H) | Granite |
| Multi Size | 1600-960 Multi | 6.5 | 24x8.4/7.6x13H(15H) | Granite |
| Multi Size | 1600-960 Multi | 7.2 | 24x9.2/8.4x13H(15H) | Granite |
| Single Size | 40"/1000mm | 4.5-5.0 | 24x7.0/6.2x13H(15H) | Granite |
| Single Size | 48"/1200mm | 5.0-5.5 | 24x7.5/6.5x13H(15H) | Granite |
| Single Size | 64"/1600mm | 6.5-7.2 | 24x9.2/8.4x13H(15H) | Granite |
| Single Size | 48"/1200mm | 4.0 | 24x5.5x8H(10H) | Marble |
| Single Size | 48"/1200mm | 4.5 | 24x6.0x8H(10H) | Marble |
| Single Size | 48"/1200mm | 5.0 | 24x7.5x8H(10H) | Marble |
| Single Size | 48"/1200mm | 5.5 | 24x8.0x8H(10H) | Marble |
| Single Size | 64"/1600mm | 6.5-7.2 | 24x9.2x10H(8H) | Marble |
| Single Size | 64"/1600mm | 6.5-7.2 | 24x9.5x13H(10H) | Marble |

Support Sample Processing Customization

Style and Specifications



Contact Salesman

Due to the large number of product specifications and styles, in order to avoid conflicts, please contact the salesman before placing the order.

1

Provide Samples

The manufacturer supports the sample processing and customization, and the buyer provides the sample first to communicate the production requirements.



2



□□□□□□□□□□□□□□□□□□

□□□□□□□□□□

40□□□□□□□□□□□□□□□□□□ 900mm□□3500mm□□□□□□□□□□□□□□□□□□□□□□□□□□□□□□□□□□



□□□□□



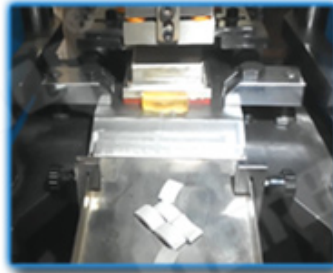
□□□□□□□□□□

□□□□

40□□□□□□□□□□□□□□□□ □□□□□□□□□□



● Cold Press Mschine



● Fill The Mold



● The Product Polishing



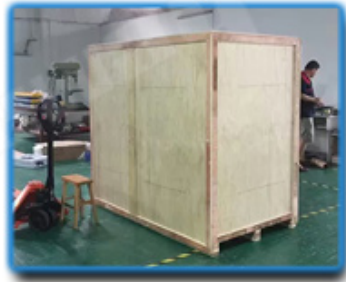
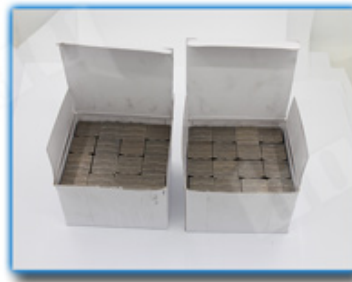
● Hot Press Machinery

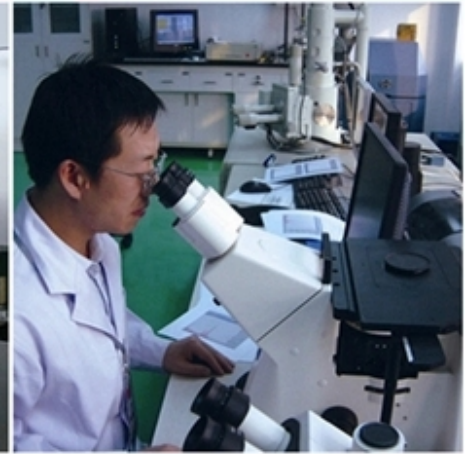


● Remove The Mold



● Packing







□□&□□□

PS□

1.□□□□□□□□□□□□□□□□

□□□□□□2.Air / Sea□□□□□□/□□□□□□

3.45kg□□□□□□□□□□□□□□□□□□□□

4.□□□□□□□□□□□□□□□□□□□□□□

XXXXXXXXXXXXXXXXXXXXXXXXXXXXXXXXXXXXXXXXXXXX

XXXXXXXXXX

XXXXXXXXXXXXXXXXXXXXXXXXXXXXXXXXXXXXXXXXXXXX
XXXXXXXXXXXXXXXXXXXXXXXXXXXXXXXXXXXXXXXXXXXX

XXXXXXXXXX

Fujian Nanan *boreway*[®] Machinery Co.,Ltd.

 No.605 Huahui Center Shuitou Town 362342 Quanzhou Fujian China

 +86 595-86990206 /  +86 595-86990220

 / **WhatsApp / Wechat** + 86 18650679939

 **boreway@boreway.com**

 XXXXXXX