

## Boreway Granite Manufacturer 2200mm Sintered Diamond Blade

### advantage:

- 1) **2200mm sintered diamond blade** Changed the combination of single grinding for cutting grinding and inserts to optimize cutting performance.
- 2) The sharpness of the tool is good, the cutting speed is fast, and the cutting efficiency is high.
- 3) Good wear resistance, long service life, high cost performance and high integration.
- 4) Fast cutting, cutting, and splicing cut the stone surface to be smooth and uniform in size.

### feature:

- 1) A large number of exports to Eastern Europe, North America, South America, the Middle East, Australia and other overseas markets; product quality has been unanimously recognized by overseas customers.
- 2) **2200mm sintered diamond blade** The feeding of the diamond sheet forms a chemical bond with (Ti + Cr + Ni + Co, etc.), which can reduce threshing, improve the cutting edge, and extend the service life.

### specification:

Following are the normal specifications **2200mm sintered diamond blade** :

Diameter mm	Thickness mm	Number of teeth (number)	long	width	high	Hole (mm)	Speed
2200 mm, 86 inches	8.0 (9.0)	132	twenty four	11.0 / 10.0	15/20	100/120	400

Blade Set 锯片组合	Blade Diameter 锯片直径	Thickness 基体厚度	Segment Size 刀头尺寸	Cutting Stone 切割石材
#	#	mm	LxWxH	#
Multi Size	2200-600 Multi	4.5	24x6.4/5.6x13H(15H)	Granite 花岗岩
Multi Size	2200-600 Multi	5.0	24x7.0/6.2x13H(15H)	Granite 花岗岩
Multi Size	2200-600 Multi	5.5	24x7.4/6.6x13H(15H)	Granite 花岗岩
Multi Size	2200-600 Multi	6.5	24x8.4/7.6x13H(15H)	Granite 花岗岩
Multi Size	2500-800 Multi	5.5	24x7.4/6.6x13H(15H)	Granite 花岗岩
Multi Size	2500-800 Multi	6.5	24x8.4/7.6x13H(15H)	Granite 花岗岩
Multi Size	2500-800 Multi	7.2	24x9.2/8.4x13H(15H)	Granite 花岗岩
Multi Size	1600-960 Multi	6.5	24x8.4/7.6x13H(15H)	Granite 花岗岩
Multi Size	1600-960 Multi	7.2	24x9.2/8.4x13H(15H)	Granite 花岗岩
Single Size	40"/1000mm	4.5-5.0	24x7.0/6.2x13H(15H)	Granite 花岗岩
Single Size	48"/1200mm	5.0-5.5	24x7.5/6.5x13H(15H)	Granite 花岗岩
Single Size	64"/1600mm	6.5-7.2	24x9.2/8.4x13H(15H)	Granite 花岗岩
Single Size	48"/1200mm	4.0	24x5.5x8H(10H)	Marble 大理石
Single Size	48"/1200mm	4.5	24x6.0x8H(10H)	Marble 大理石
Single Size	48"/1200mm	5.0	24x7.5x8H(10H)	Marble 大理石
Single Size	48"/1200mm	5.5	24x8.0x8H(10H)	Marble 大理石
Single Size	64"/1600mm	6.5-7.2	24x9.2x10H(8H)	Marble 大理石
Single Size	64"/1600mm	6.5-7.2	24x9.5x13H(10H)	Marble 大理石

The above specifications are for reference only, other specifications can be provided according to customer requirements.

**Factory = Quality Control = Competitive Price = Own Technology = OEM**

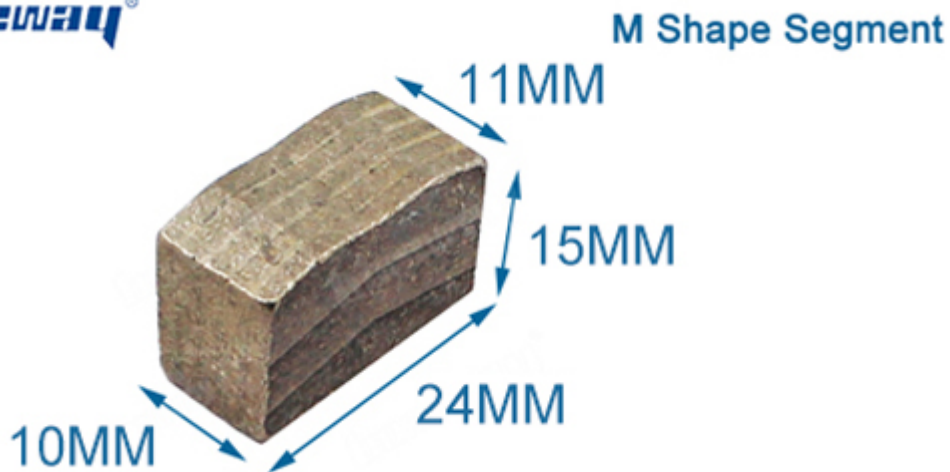
note:

When cutting, add some water to the cutting tool and let the water flow to make it have better cooling effect.

Otherwise, the speed of the compound saw blade is required to be 280-320 revolutions per minute, so the car speed is too fast!

## Product Details:

**2200mm sintered diamond blade**

**example:**

The stone is soft and abrasive, so we will use hard blades. Reinforced concrete with river pebble aggregate is hard, so we will use soft bonding blades.

**Hard bond**

This means that the composition of the metal forms about 105 to 120 HRB (hardness) fragments when sintered together, and is very resistant to soft abrasive sawing, thus releasing diamond at an appropriate rate.

Hard bonds usually consist of the following metal powders: cobalt, iron, tungsten carbide, and gray to dark gray.

**Soft bond**

This means that when sintered together, the accumulation of metal forms a segment of about 90 to 105 HRB (hardness) and causes the segment to wear faster, leaving the diamond on the cutting surface.

Soft keys usually consist of the following metal powders-copper, bronze and cobalt, usually bronze to light silver.

**Application:**

**2200mm sintered diamond blade** For overall cutting of 900-3500mm circular saw blades

Diamond tablets cut granite, sandstone, various hard quartz stones.

2200mm sintered diamond blade can only be used wet



Granite

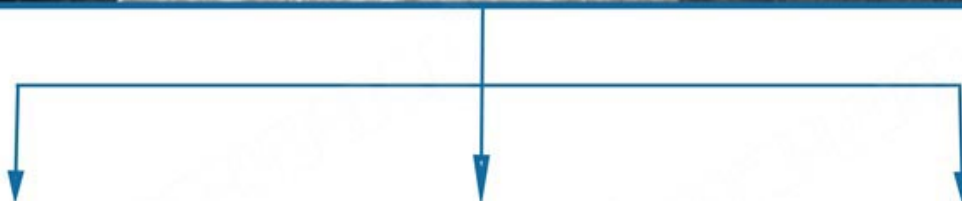


Sandstone



Quartz

For Block Cutting of Granite, Sandstone, Slate, Kinds of Hard Stone with quartz

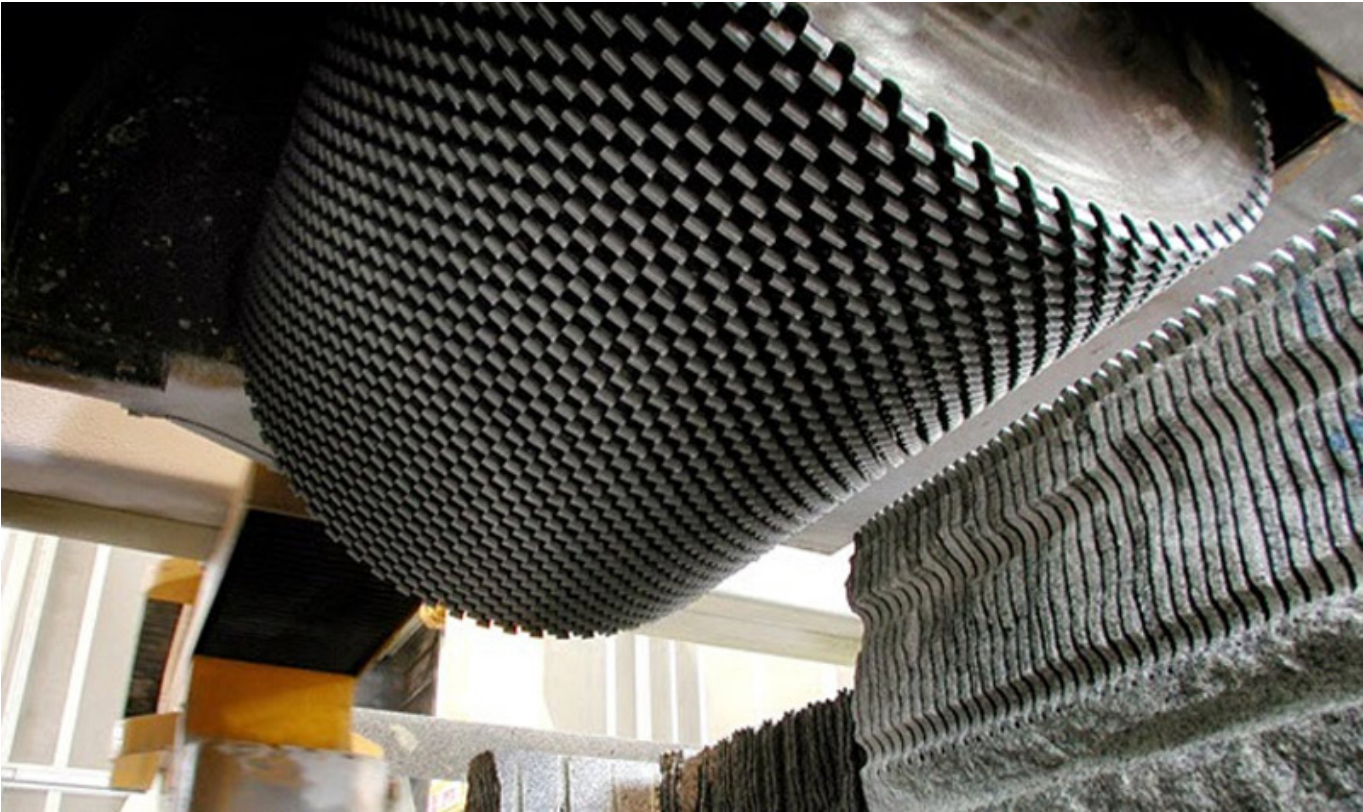


One is single size multi cutter, which all blade sizes in same thickness and diameter while the other is multi size multi cutter, two sizes or more different size diameter blades used together in one stone machine.

### Application machine:

**2200mm sintered diamond blade** For single or multiple circular saws from 900 mm to 3500 mm, cutting granite, sandstone, various quartz hard stones





**Our factory** use original high grade diamond



pk

**Other factory** mix second diamond selected from waste segment

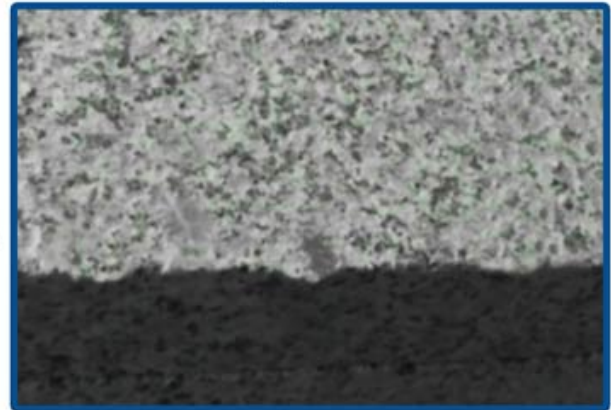


**Our blade** cutting effect



pk

**Other supplier** blade cutting effect



1. If the material is hard, the bonding of the diamond segments should be soft.  
Because diamonds become dull when cutting hard materials. Softer  
The duller diamonds wear out faster, then it is easier to expose new diamonds underneath to participate in cutting
2. If the material is relatively soft, the bond should be hard.  
Diamonds can last longer in this case. The harder binding layer wears more slowly, so it can hold the diamond longer. This makes better use of diamond and extends the life of diamond tools.

#### **Application machine:**

Welding method: **2200mm sintered diamond blade** High frequency welding machine for silver welding

It is recommended to use high frequency silver welding machine instead of welding with fire. Do not weld the diamond sheet for a long time, only a few minutes, otherwise the internal diamond may be damaged due to high temperature, which will greatly affect the cutting performance of the granite sheet.



Brazing Machine Welding Rack

+



Three Phase 380V 30kW High  
Frequency Induction Welding Machine



Welding segment effect

## Related Products:



Boreway Machinery Co.,Ltd  
www.diamondtools.top  
www.boreway.net

[1800mm multilayer board](#)



Boreway Machinery Co.,Ltd  
www.diamondtools.top  
www.boreway.net

[II diamond blade](#)

## about us:









### Packing & Delivery:

1. Tools packing in carton cases;
2. When tools are in large quantities, they are packing in wooden cases.

## -DELIVERY-

Less than 45kg, generally delivery by express (Door to Door).



By Air / Sea for batch goods, Airport / Port receiving.

BY AIR



BY SEA



### our service:

1. Low order volume: can meet your required test orders.
2. Fast delivery: We get a great discount from the freight forwarder.

3. OEM acceptable: We can produce according to your samples or drawings.
4. Excellent quality: We have strict quality control system. Has a good reputation in the market.
- 5, Excellent service: We treat customers as God with a high degree of professionalism and enthusiasm.

## FAQ:

### 1. If we want to order your product, how do we know your quality?

You can order in small quantities for testing and you will know the quality. Today, many people in the world use Chinese products for their high quality and cost-effectiveness. We are a professional diamond tool manufacturer with more than 8 years manufacturing experience.

### 2. Can you provide samples for free?

We do not provide free samples. Based on years of experience, we believe customers will want them for their reliable quality. By buying samples, we will cherish and appreciate them and make them more. We are ready to offer special discounts for samples to potential customers. Your feedback is very important and we would appreciate it.

### 3. Does your company accept customization?

Of course, we accept customization. Including different colors, cutting objects and more. We can also mark your own label and company brand. If you want us to make any new product for you, just send us your product. Whether it is drawings or samples, we have the ability to produce the same product. We do not sell these products to others and only customers can obtain a license.

## Please note:

Please use a high-frequency silver welding machine instead of a furnace for brazing. The welding time is only a few seconds, otherwise the diamond in the segment may be damaged by high temperature, which will reduce the cutting performance!


## contact us:

**Fujian Nanan *boreway* Machinery Co.,Ltd.**



No.605 Huahui Center, Shuitou Town, Quanzhou City, Fujian Province  
362342



**phone:** (+86) 595-86990206 /  **fax:** (+86) 595-86990220



**Phone / WhatsApp / WeChat:** (+ 86) 18650679939



**e-mail:** [boreway@boreway.com](mailto:boreway@boreway.com)



**Zhang Lyon**