

### Introduction:

**Boreway Diamond Tools 358MM Professional Laser welded High Turbo segments Diamond Saw Blade Cutting Reinforced concrete Disc Diamond Wheel** is used for cutting Reinforced concrete, Hard material, hard brick ect.

Feature:

1. Dry or wet cutting;
2. 15MM segment height provide much longer working life;
3. Suitable for road saw, high speed hand-held saw, table saw;
4. Laser welding provide best welding strength avoid segment-off;
5. Turbo segment design help to improve the cutting speed and cooling the segments. So more efficient, fast and stable in cutting.

### Specification:

**Laser welded High Turbo segments Diamond Saw Blade Cutting Reinforced concrete Disc Diamond Wheel**

Diameter	Bore	Diamond Height	Segment Thickness
14"/358MM	25.4MM with pin hole	15MM	3.2MM

**Other Specification can be customized according to buyer's requirements.**

### Picture:

**Laser welded High Turbo segments Diamond Saw Blade Cutting Reinforced concrete Disc Diamond Wheel**

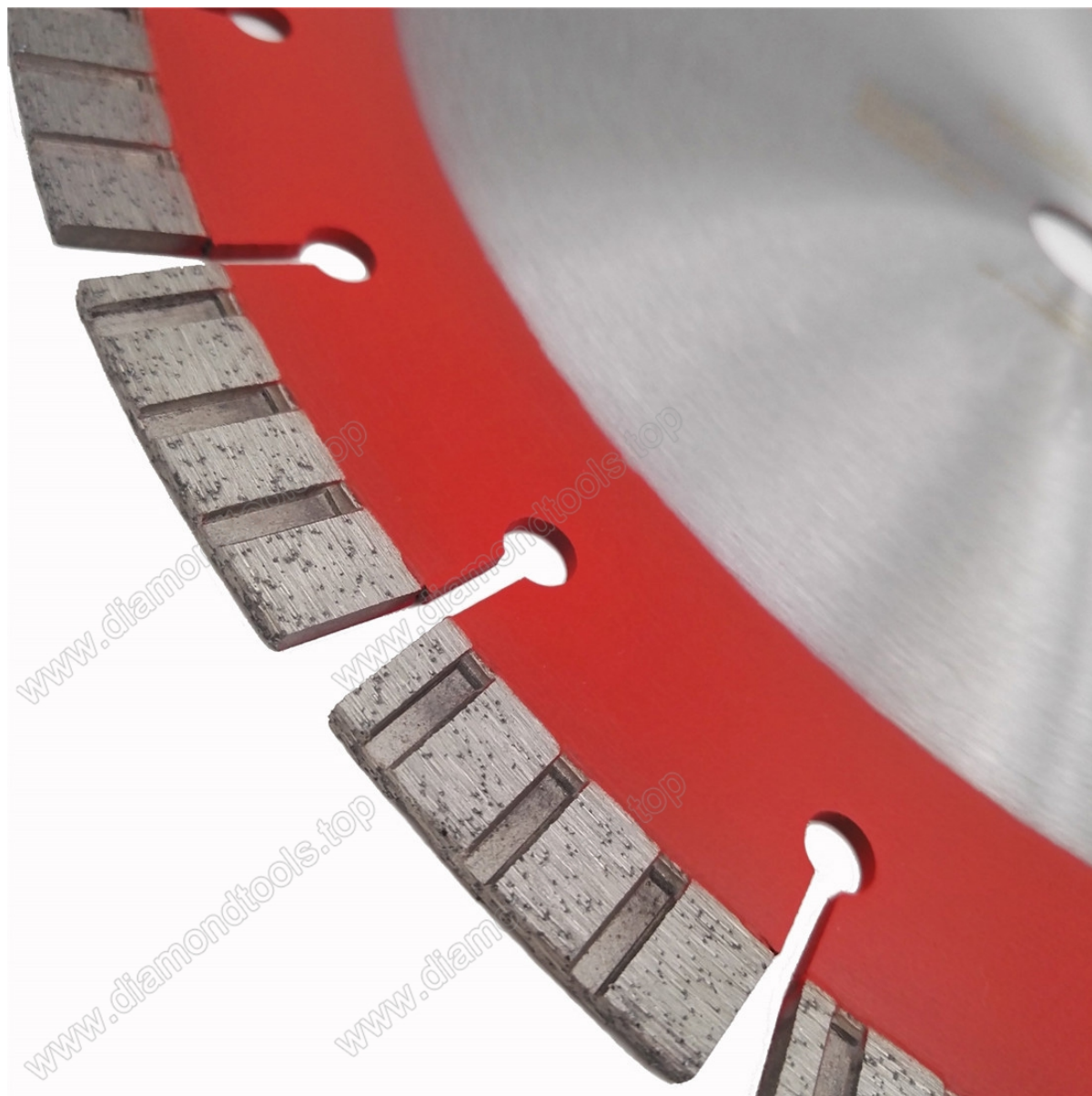


Boreway Machinery Co., Ltd.  
[www.diamondtools.top](http://www.diamondtools.top)  
[www.boreway.com](http://www.boreway.com)

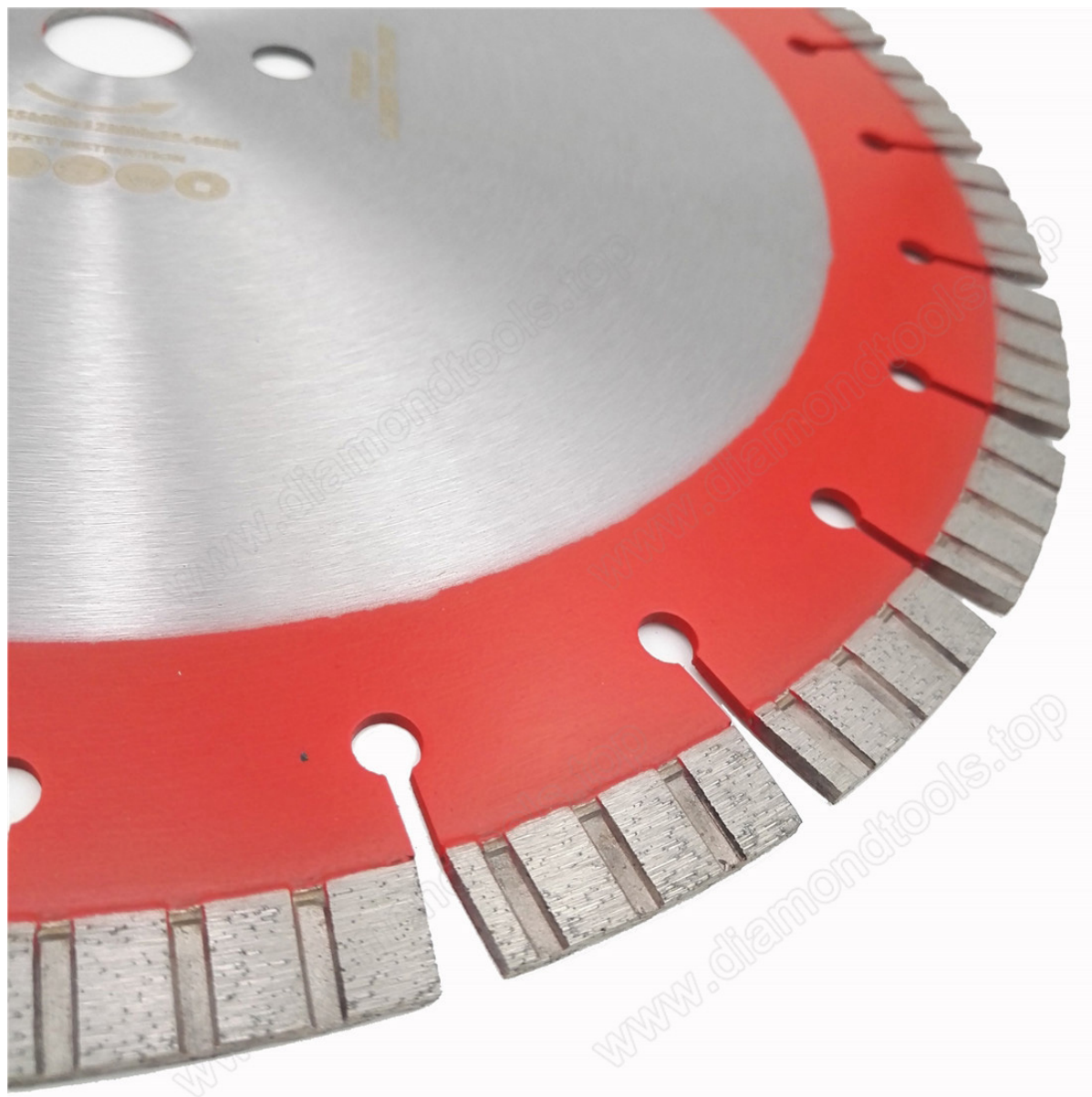
**boreway®**



**Boreway Machinery Co., Ltd.**  
[www.diamondtools.top](http://www.diamondtools.top)  
[www.boreway.com](http://www.boreway.com)









#### Packing & Delivery:

1. Tools packing in carton cases;
2. When tools are in large quantities, they are packing in wooden cases.

# -DELIVERY-

Less than 45kg,generally delivery by express(Door to Door).



By Air / Sea for batch goods, Airport / Port receiving.

BY AIR



BY SEA



## Kindly Note:

### When place order for saw blades please inform the following:

- Diameter (Inch or mm)
- Inner Hole Size (Inch or mm)
- Installation hole (If, need drawing)
- Silent or None Silent Saw Blade
- Segment No. (how many pcs segment per blade)
- Segment Size (L x W x H, if possible please inform Steel Core Thickness)
- Use of saw blade (For Granite, or marble, or limestone, or Sandstone. or other material)
- Expected Shipping Date
- Special Requirements (If)

## Contact Us:

**Fujian Nanan Boreway Machinery Co.,Ltd.**

**Address: Huahui Center 605, Shuitou Town,Quanzhou, Fujian, China.**

**Post Code: 362342**

**Tel.: 0086-595-86990206**

**Fax: 0086-595-86990220**

**Sales: Ally Huang**

**Mobile/WhatsApp: 0086-13559599186**

**Wechat: boreway05**

**Skype: boreway05**

**Facebook: 13559599186**

**E-mail:** [boreway05@boreway.net](mailto:boreway05@boreway.net)