

□□□□□:

14 □□□ □□□ □□□□ □□□ □□□□□ □□□□□ □□□□□:



□□ □□□ □□□ □□□□□ □□□□□ □□ □□□□ □□□ □□□□□ □□□ □□□□ □□□ □□ □□ □□, □□ □□□ □□□ □□ □□□□□□□□□ □□□□□□□□□ □□□□□ □□□□□ □□□

□□□□ □□□□□□ □□□□□□□□ □□ □□□ □□□□□ □□□□ □□□□□ □□□□□ □□ □□□□□, □□ □□□□ □□ □□□□□ □□□ □□ □□□ □□□□□ □□ □□□□ □□ □□□ □□ □□ □□ □□ □□ □□ □□□□□□□ □□ □□□□□ □□□□□ □□□□ □□□

□□□ □□□□□□ □□□□□□ □□□□□□ □□ □□□□ □□□□ □□ □□□ □□□□□□ □□ □□□□□ □□□□□ □□□

Table 1: 300-1000

Table 1 shows the number of units sold (Units Sold) and the number of units produced (Units Produced) for the 300-1000 range. The units sold are 12, 14, 16, 18, 20, 24, 26, 28, 30, 32, 35, and 40. The units produced are 300, 350, 400, 450, 500, 600, 650, 700, 750, 800, 900, and 1000. The units sold are also shown as a percentage of the units produced (Units Sold / Units Produced).

300-1000					
Units Sold		Units Produced			Units Sold / Units Produced
Units Sold	Units Produced	Units Sold	Units Produced	Units Sold / Units Produced	Units Sold / Units Produced
12	300	40	3	10	21
14	350	40	3.2	10/12	24
16	400	40	3.6	10/12/15	28
18	450	40	4	10/12/15	32
20	500	40	4.2	10/12/15	36
24	600	40	4.6	10/12/15	42
26	650	40	4.6	10/12/15	46
28	700	40	4.6	10/12/15	50
30	750	40	4.8	10/12/15	54
32	800	40	4.8	10/12/15	54
35	900	40	4.8	10/12/15/20	56
40	1000	40	5.2	10/12/15/20	58

Table 1 shows the number of units sold (Units Sold) and the number of units produced (Units Produced) for the 300-1000 range. The units sold are 12, 14, 16, 18, 20, 24, 26, 28, 30, 32, 35, and 40. The units produced are 300, 350, 400, 450, 500, 600, 650, 700, 750, 800, 900, and 1000. The units sold are also shown as a percentage of the units produced (Units Sold / Units Produced).

Table 2 shows the number of units sold (Units Sold) and the number of units produced (Units Produced) for the 300-1000 range. The units sold are 12, 14, 16, 18, 20, 24, 26, 28, 30, 32, 35, and 40. The units produced are 300, 350, 400, 450, 500, 600, 650, 700, 750, 800, 900, and 1000. The units sold are also shown as a percentage of the units produced (Units Sold / Units Produced).

1. Table 1 shows the number of units sold (Units Sold) and the number of units produced (Units Produced) for the 300-1000 range. The units sold are 12, 14, 16, 18, 20, 24, 26, 28, 30, 32, 35, and 40. The units produced are 300, 350, 400, 450, 500, 600, 650, 700, 750, 800, 900, and 1000. The units sold are also shown as a percentage of the units produced (Units Sold / Units Produced).

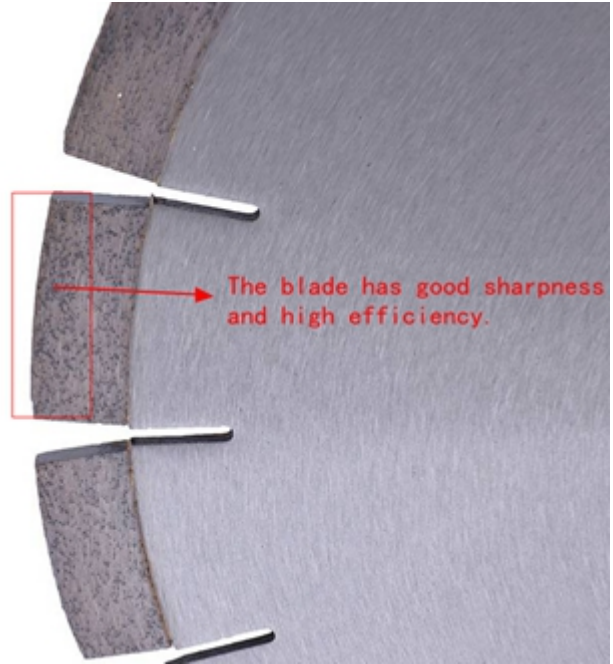
2. Table 1 shows the number of units sold (Units Sold) and the number of units produced (Units Produced) for the 300-1000 range. The units sold are 12, 14, 16, 18, 20, 24, 26, 28, 30, 32, 35, and 40. The units produced are 300, 350, 400, 450, 500, 600, 650, 700, 750, 800, 900, and 1000. The units sold are also shown as a percentage of the units produced (Units Sold / Units Produced).

Table 2: 300-1000

14 Table 2 shows the number of units sold (Units Sold) and the number of units produced (Units Produced) for the 300-1000 range. The units sold are 12, 14, 16, 18, 20, 24, 26, 28, 30, 32, 35, and 40. The units produced are 300, 350, 400, 450, 500, 600, 650, 700, 750, 800, 900, and 1000. The units sold are also shown as a percentage of the units produced (Units Sold / Units Produced).



Good continuity, effectively, not collapse



□□□□□□□□□□:

□□□□□□□ □□□□□□ □□□□□□ □□ □□□□□ □□□□ □□□□ □□□□, □□□□□□□ □□□□□ □□□□, □□□□ □□□□ □□□□ □□ □□□□□□□ □□□□

Applicable materials



To meet your demands for cutting different materials, such as granite, marble, quartz stone, sand stone, microcrystalline stone, volcanic rock, concrete, glass, ceramic, masonry etc. Different segments recipe were been developed by our company.



Confidential Formula



Reinforced Concrete



Concrete Block



Rock/Granite



Refractory Brick



Hard Masonry Block



Asphalt Road

□□□: □□□□□ □□□□□, □□□ □□□□ □□ □□□□□, □□□□□□□□ □□□□□□ □□ □□□□□□ □□ □□□□□□ □□□□□□ □□□□□

□□□□:

□□□ □□□□ □□□□□□□ □□□□ □□□□□□:

□□□□□ □□□□□ □□□□□□□□ □□ □□□ 1.Ideal □□□□□ □□□□□□□□ □□□□□□□□□□

2. □□□□□□□□ □□□□□□ □□□□□□□□□□□□

3. □□□□□ □□□□□□ □□□□□□□, □□ □□□□, □□ □□ □□□□ □□□□ □□□□

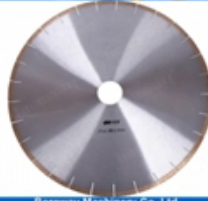
4. □□□□□□□ □□ □□□□ □□ □□□ □□□□□ □□ □□□□□□ □□□□□□ □□□□□□ □□□□□

□□□□□□□ □□ **enspProducts:**



Boreway Machinery Co., Ltd
www.fordiamondtools.com
www.diamondtools.biz

□□□□□□ □□ □□ □□□□ □□ □□□□□□

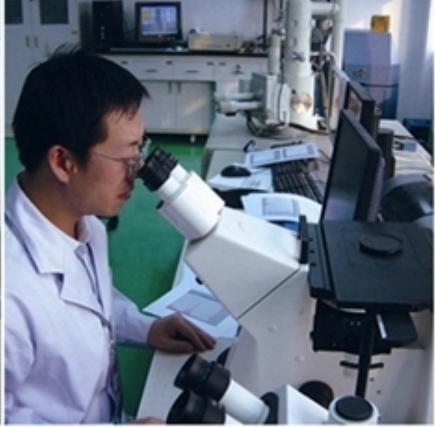


Boreway Machinery Co., Ltd
www.fordiamondtools.com
www.diamondtools.biz

□□□□□□ □□ □□ □□□□ □□□□ □□ □□□□

□□□□ □□□□ □□□□ :

□□ □□ □□□□ □□□□□□ □□□□□□ □□□□□□ **control**



本公司備有各種型號之機器，歡迎各界人士垂詢。如有需要，請洽本公司業務部。

3. 本公司備有各種型號之機器，歡迎各界人士垂詢？

本公司備有各種型號之機器，歡迎各界人士垂詢。如有需要，請洽本公司業務部。本公司備有各種型號之機器，歡迎各界人士垂詢。如有需要，請洽本公司業務部。

歡迎各界人士垂詢：[Placeholder]

本公司備有各種型號之機器，歡迎各界人士垂詢。如有需要，請洽本公司業務部。

- 本公司備有各種型號之機器
- 歡迎各界人士垂詢
- 如有需要，請洽本公司業務部
- 本公司備有各種型號之機器
- 歡迎各界人士垂詢
- 如有需要，請洽本公司業務部
- 本公司備有各種型號之機器
- 歡迎各界人士垂詢
- 如有需要，請洽本公司業務部
- 本公司備有各種型號之機器
- 歡迎各界人士垂詢
- 如有需要，請洽本公司業務部
- 本公司備有各種型號之機器
- 歡迎各界人士垂詢
- 如有需要，請洽本公司業務部

歡迎各界人士垂詢：[Placeholder]

Fujian Nanan *boreway* Machinery Co.,Ltd.

 No.605 Huahui [Placeholder], Shuitou [Placeholder] ensp362342 Quanzhou, [Placeholder]

 電話：(+86) 595-86990206 / &  電話：(+86) 595-86990220

 / **WhatsApp** / 電話：(+ 86) 13559599186

 郵箱：boreway06@boreway.net

 歡迎各界人士垂詢