



# boneway® Diamond fickert polishing heads



Polishing heads are used for the final polishing of metal surfaces. They are available in different sizes and configurations to suit various applications. The diamond inserts provide a high degree of abrasiveness, ensuring a smooth and reflective finish.

The yellow model is suitable for general polishing, while the green model is designed for more demanding applications. The diamond inserts are made of high-quality synthetic diamonds, providing long life and consistent performance.

The polishing heads are easy to install and maintain. They are compatible with a wide range of grinding machines and can be used on a variety of materials, including steel, aluminum, and stainless steel. The diamond inserts are replaceable, allowing for easy maintenance and cost savings.

For more information on our diamond fickert polishing heads, please contact our sales department. We will be happy to provide you with the technical specifications and pricing for the model that best suits your needs.

□□□□ □□□□:

□□□□□□ □□□□ □□□□□□ □□□□□□ □□ □□□□ □□□□□ □□ □□□□:

<p>□□□□□□ □□ □□□□</p>	<p>□□□□ □□□□</p>	<p>□□□□ □□□□□□</p>	<p>□□□□□</p>	<p>□□□□□□ □□□□□</p>
<p>L140 □□□□□, L170 □□□□□</p>	<p>99□□□□□□□□</p>	<p>3.6/4.5/4.6/4.7/6/8 □□□□□</p>	<p>□□□□□: □□□□□□ □□□□□ □□□□□□□□</p>	<p>□□□□□□□□□□, □□□□□□□□ □□ □□□□□ □□□□□□□□□□ □□□□□□□</p>

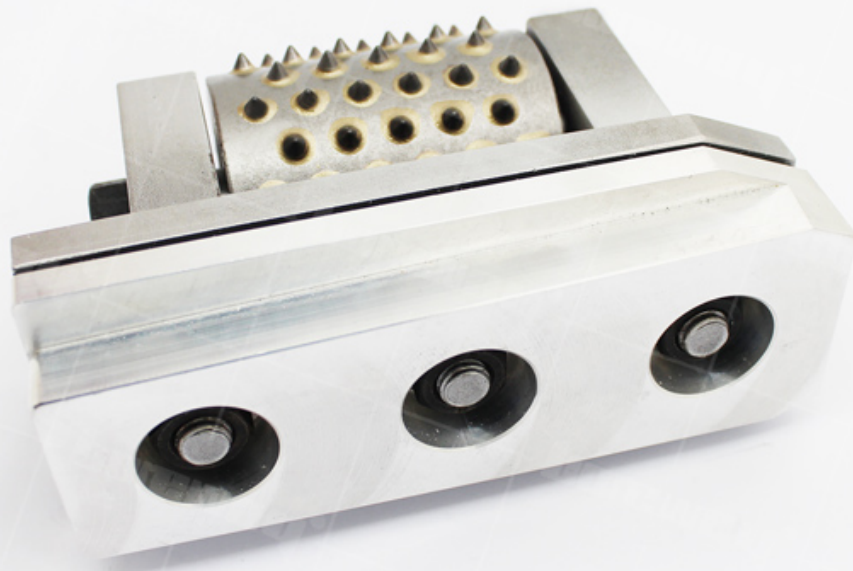
□□□□□□□□ □□□□□□□□□□ □□□□□□ □□ □□□□ □□□□, □□□□□ □□□□□□□□□□□□□□ □□ □□□□□□□□□ □□□□□□□ □□□□□ □□□□□ □□□□ □□□□ □□□□

□□□□□ □□□□ □□□□□□□ □□□□□□□ □□ □□□□□ □□□□□□□□□□□□□□□□□□□:

□□□□□□	□□□□□□ □□ □□□□	□□□□□□ □□□□□□□□	□□□□ □□□□□□□□	□□□□ □□□□□□	□□□□□□□□
BW-BHR4530	45	22	30	3.6 4.5 4.6 4.7 6.0 8.0	□□□□□□□ □□ □□□□ □□□□□ □□□□□
BW-BHR5330	53	30	30		
BW-BHR5530	55	22	30		
BW-BHR5545	55	22	45		
BW-BHR5545	55	30	45		
BW-BHR5545	55	39	45		
BW-BHR5545	55	53	45		
BW-BHR5545	55	55	45		
BW-BHR5560	55	43	60		
BW-BHR8060	80	55	60		
BW-BHR5972	59	53	72	□□□□ □□□□□□□□	
BW-BHR6077	60	53	99		
BW-BHR3307	33	6	7		
BW-BHR3310	33	6	10		
BW-BHR4910	49	6	10		
BW-BHR4915	49	6	15		
BW-BHR4920	49	6	20		

□□□□□□□ □□□□□□□□:

□□□□□ □□□□□ □□□□□□□□□ □□ □□□ □□□□□ □□□□□□ □□□ □□□□□ □□□□□□





2. 鋼絲繩 (鋼絲繩, 鋼絲繩繩 鋼 鋼繩 鋼繩, 鋼絲繩繩 鋼 鋼繩 鋼繩繩 鋼 鋼繩繩 鋼繩)
3. 鋼絲繩繩 鋼繩 (30s, 45s, 60s, 72, 99s, 鋼繩繩, 鋼繩繩 鋼繩繩 鋼繩繩, 鋼絲繩繩繩 鋼繩繩繩繩)
4. 鋼繩 鋼繩繩 鋼繩繩繩 鋼 鋼繩繩繩 (125 鋼繩繩, 150 鋼繩繩, 200 鋼繩繩, 250 鋼繩繩, 300 鋼繩繩, 350 鋼繩繩, 鋼繩)
5. Base 鋼繩繩繩 (鋼繩 鋼繩, 鋼繩繩繩繩繩繩, 鋼繩繩繩繩, 鋼繩繩繩繩, 鋼繩繩繩繩繩, HTC, 鋼繩繩繩繩繩繩, 鋼繩繩繩繩繩繩, 鋼繩繩繩繩繩, 鋼繩)
6. 鋼繩繩繩繩 (鋼繩 鋼繩 鋼繩繩繩繩 鋼繩繩繩繩繩, 鋼繩繩繩繩繩繩 鋼繩 鋼繩繩繩繩繩 鋼繩繩, 鋼繩繩繩繩繩繩 鋼繩 鋼繩繩, 鋼繩繩繩繩繩繩繩, 鋼繩 鋼繩繩繩繩 鋼繩繩繩繩繩)

鋼絲繩繩繩 鋼繩繩:

## Fujian Nanan *boreway*<sup>®</sup> Machinery Co.,Ltd.



No.605 Huahui Center, Shuitou Town 362342 Quanzhou, Fujian, China



鋼絲繩繩繩: (+86) 595-86990206 /  鋼絲繩繩繩:(+86) 595-86990220



鋼絲繩繩繩 / **WhatsApp** / **WECHAT**:(+ 86) 18650679939



鋼絲繩繩繩: **boreway@boreway.com**