

1. 1400 2. 3. 4.

1400

1. 1400
- 2.
- 3.
4. 1400

1400

1400

1400

1400

1400

1400	1400	1400	1400	1400	1400	1400	1400
3000	9.0	180	24	13/12	20/30	100/120	250

1400

Diameter		Thickness	Teeth	Segment Size			Hole	Max. RPM	Cutting Stone
Inch	mm	mm	pcs/set	L	W	H	mm	RPM	#
10"	250	1.8(2.2)	17	40	3.2	8/10/12	50/60	3450	Granite
12"	300	1.8(2.2)	21	40	3.2	12/15/20	50/60	2850	Granite
14"	350	2.2(2.4)	24	40	3.2	12/15/20	50/60	2450	Granite
16"	400	2.6(2.8)	28	40	3.6	12/15/20	50/60	2150	Granite
18"	450	2.8(3.0)	32	40	4.2	12/15/20	50/60	1900	Granite
20"	500	2.8(3.0)	36	40	4.2	12/15/20	50/60	1750	Granite
24"	600	3.6(3.2)	42	40	4.6	12/15/20	50/60	1450	Granite
32"	800	4.2(4.5)	57	40	5.5	12/15/20	50/60	1150	Granite
36"	900	5.0(5.5)	64	40	6.5	12/15/20	60/80	950	Granite
36"	900	5.0(5.5)	64	24	7.0/6.2	13/15/20	60/80	950	Granite
40"	1000	5.0(5.5)	70	24	7.0/6.2	13/15/20	80/100	850	Granite
48"	1200	5.5(6.0)	80	24	7.4/6.6	13/15/20	80/100	750	Granite
56"	1400	6.0(6.5)	92	24	8.4/7.6	13/15/20	80/100	600	Granite
64"	1600	6.5(7.2)	108	24	9.2/8.4	13/15/20	80/100	550	Granite
72"	1800	7.2(8.0)	120	24	10.0/9.2	13/15/20	80/100	500	Granite
80"	2000	8.0(9.0)	128	24	11.0/10.0	15/20	100/120	450	Granite
86"	2200	8.0(9.0)	132	24	11.0/10.0	15/20	100/120	400	Granite
100"	2500	9.0(10.0)	140	24	12.0/11.0	15/20	100/120	350	Granite
120"	3000	9.0(10.0)	160	24	12.5/11.5	20/30	100/120	300	Granite
140"	3500	9.0(10.0)	180	24	13.0/12.0	20/30	100/120	250	Granite

□□□-□□□□□ □□ □□□-□□□□□ □□□□□ □□□□□□□□□□□□ □□ □□□□□:

Blade Set	Blade Diameter	Thickness	Segment Size	Cutting Stone
#	#	mm	LxWxH	#
Multi Size	2200-600 Multi	4.5	24x6.4/5.6x13H(15H)	Granite
Multi Size	2200-600 Multi	5.0	24x7.0/6.2x13H(15H)	Granite
Multi Size	2200-600 Multi	5.5	24x7.4/6.6x13H(15H)	Granite
Multi Size	2200-600 Multi	6.5	24x8.4/7.6x13H(15H)	Granite
Multi Size	2500-800 Multi	5.5	24x7.4/6.6x13H(15H)	Granite
Multi Size	2500-800 Multi	6.5	24x8.4/7.6x13H(15H)	Granite
Multi Size	2500-800 Multi	7.2	24x9.2/8.4x13H(15H)	Granite
Multi Size	1600-960 Multi	6.5	24x8.4/7.6x13H(15H)	Granite
Multi Size	1600-960 Multi	7.2	24x9.2/8.4x13H(15H)	Granite
Single Size	40"/1000mm	4.5-5.0	24x7.0/6.2x13H(15H)	Granite
Single Size	48"/1200mm	5.0-5.5	24x7.5/6.5x13H(15H)	Granite
Single Size	64"/1600mm	6.5-7.2	24x9.2/8.4x13H(15H)	Granite
Single Size	48"/1200mm	4.0	24x5.5x8H(10H)	Marble
Single Size	48"/1200mm	4.5	24x6.0x8H(10H)	Marble
Single Size	48"/1200mm	5.0	24x7.5x8H(10H)	Marble
Single Size	48"/1200mm	5.5	24x8.0x8H(10H)	Marble
Single Size	64"/1600mm	6.5-7.2	24x9.2x10H(8H)	Marble
Single Size	64"/1600mm	6.5-7.2	24x9.5x13H(10H)	Marble

Support Sample Processing Customization

Style and Specifications



Contact Salesman

Due to the large number of product specifications and styles, in order to avoid conflicts, please contact the salesman before placing the order.

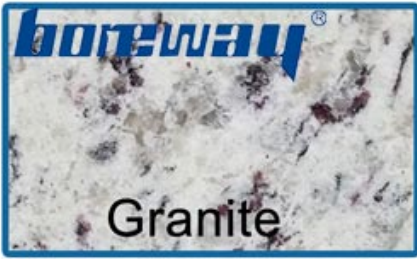
1

Provide Samples

The manufacturer supports the sample processing and customization, and the buyer provides the sample first to communicate the production requirements.



2



Granite

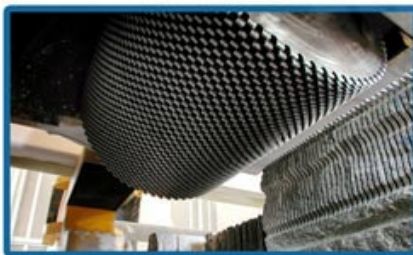
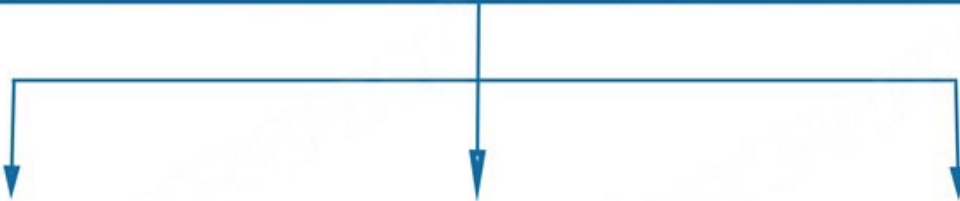


Sandstone



Quartz

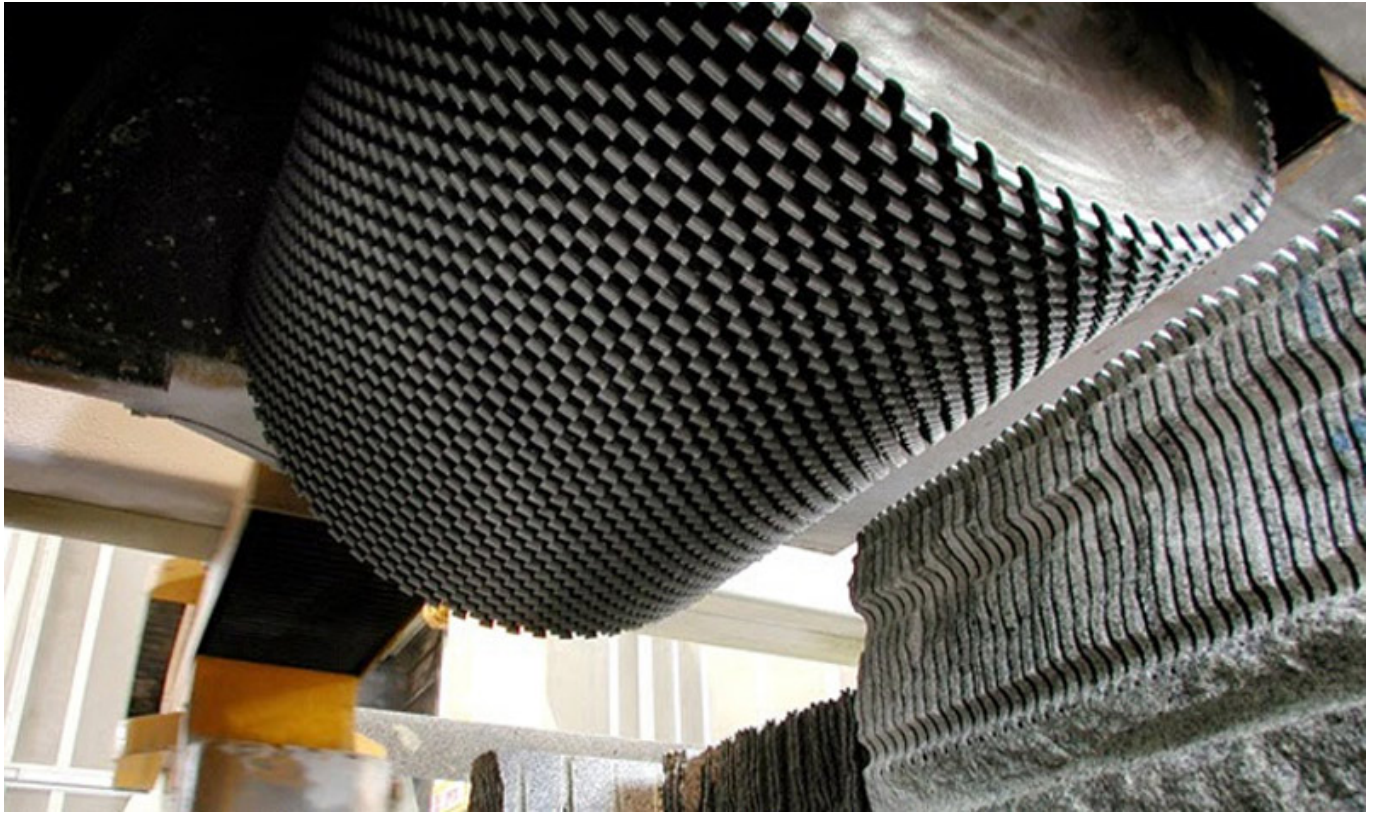
For Block Cutting of Granite, Sandstone, Slate, Kinds of Hard Stone with quartz



One is single size multi cutter, which all blade sizes in same thickness and diameter while the other is multi size multi cutter, two sizes or more different size diameter blades used together in one stone machine.

□□□□ □□□□:

□□□□-□□□□ □□□□□□ □□ □□□□ □□□□□□ □□□□□□ □□□□□□ 900 □□□□ □□ 3500 □□□□ □□ □□□□ □□ □□□□□□ □□□□ □□□□ □□ □□□□ □□□□ □□□□ □□□□ □□□□□□□□ □□ □□□□□□ □□□□ □□□□□□



Our factory use original high grade diamond



pk

Other factory mix second diamond selected from waste segment

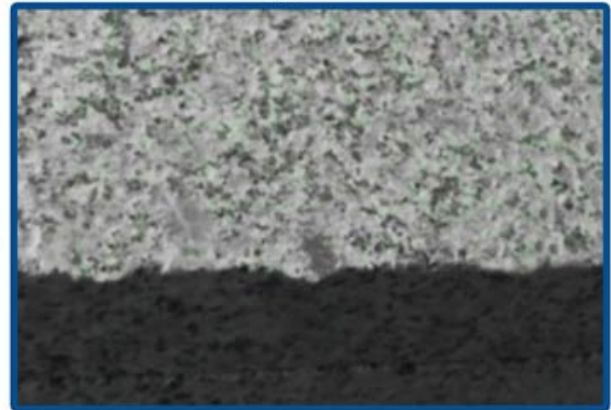


Our blade cutting effect



pk

Other supplier blade cutting effect



1. 此項產品係由本公司自行研發，其品質與市場上其他廠家所生產之產品相比，具有顯著之差異。本公司所生產之產品，其品質優良，且價格公道，深受廣大客戶之喜愛。本公司所生產之產品，其品質優良，且價格公道，深受廣大客戶之喜愛。本公司所生產之產品，其品質優良，且價格公道，深受廣大客戶之喜愛。
2. 此項產品係由本公司自行研發，其品質與市場上其他廠家所生產之產品相比，具有顯著之差異。本公司所生產之產品，其品質優良，且價格公道，深受廣大客戶之喜愛。本公司所生產之產品，其品質優良，且價格公道，深受廣大客戶之喜愛。本公司所生產之產品，其品質優良，且價格公道，深受廣大客戶之喜愛。

關於我們:

本公司係由多位資深專家所組成，具有豐富之經驗與專業之技術。本公司所生產之產品，其品質優良，且價格公道，深受廣大客戶之喜愛。本公司所生產之產品，其品質優良，且價格公道，深受廣大客戶之喜愛。本公司所生產之產品，其品質優良，且價格公道，深受廣大客戶之喜愛。



Brazing Machine Welding Rack

+



Three Phase 380V 30kW High Frequency Induction Welding Machine



Welding segment effect

□□□□□□ □□□□□□:



Boreway Machinery Co.,Ltd
www.diamondtools.top
www.boreway.net

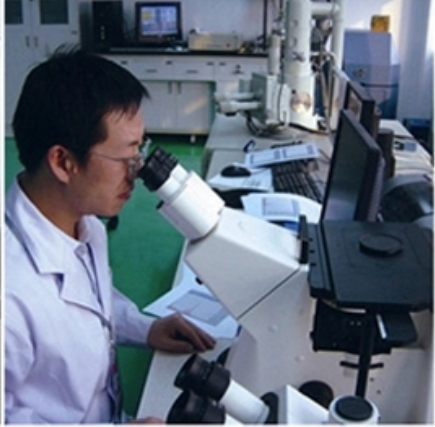
1800 □□□□ □□□□□□ □□□□ □□□□□□



Boreway Machinery Co.,Ltd
www.diamondtools.top
www.boreway.net

□□□□ □□□□ □□□□□□ □□ □□□□ □□□□□□

□□□□□ □□□□ □□□:





□□□□□□ □□ □□□□□□:

1. Tools packing in carton cases;
2. When tools are in large quantities, they are packing in wooden cases.

-DELIVERY-

Less than 45kg,generally delivery by express(Door to Door).



By Air / Sea for batch goods, Airport / Port receiving.

BY AIR



BY SEA



By Air / Sea for batch goods, Airport / Port receiving.

1. 貨物 梱包 状態: 貨物 梱包 状態 貨物 梱包 状態 貨物 梱包 状態 貨物 梱包 状態
2. 貨物 梱包 状態: 貨物 梱包 状態 貨物 梱包 状態 貨物 梱包 状態 貨物 梱包 状態
3. OEM 梱包 状態: 貨物 梱包 状態 貨物 梱包 状態 貨物 梱包 状態 貨物 梱包 状態
4. 貨物 梱包 状態: 貨物 梱包 状態 貨物 梱包 状態 貨物 梱包 状態 貨物 梱包 状態
5. 貨物 梱包 状態: 貨物 梱包 状態 貨物 梱包 状態 貨物 梱包 状態 貨物 梱包 状態

貨物 梱包 状態:

1. 貨物 梱包 状態 貨物 梱包 状態 貨物 梱包 状態, 貨物 梱包 状態 貨物 梱包 状態 貨物 梱包 状態?
 貨物 梱包 状態 貨物 梱包 状態 貨物 梱包 状態 貨物 梱包 状態, 貨物 梱包 状態 貨物 梱包 状態 貨物 梱包 状態
 貨物 梱包 状態, 貨物 梱包 状態 貨物 梱包 状態 貨物 梱包 状態 貨物 梱包 状態 貨物 梱包 状態 貨物 梱包 状態
 貨物 梱包 状態 貨物 梱包 状態 貨物 梱包 状態 貨物 梱包 状態 8 貨物 梱包 状態 貨物 梱包 状態 貨物 梱包 状態
 貨物 梱包 状態 貨物 梱包 状態
2. 貨物 梱包 状態 貨物 梱包 状態 貨物 梱包 状態 貨物 梱包 状態 貨物 梱包 状態?

