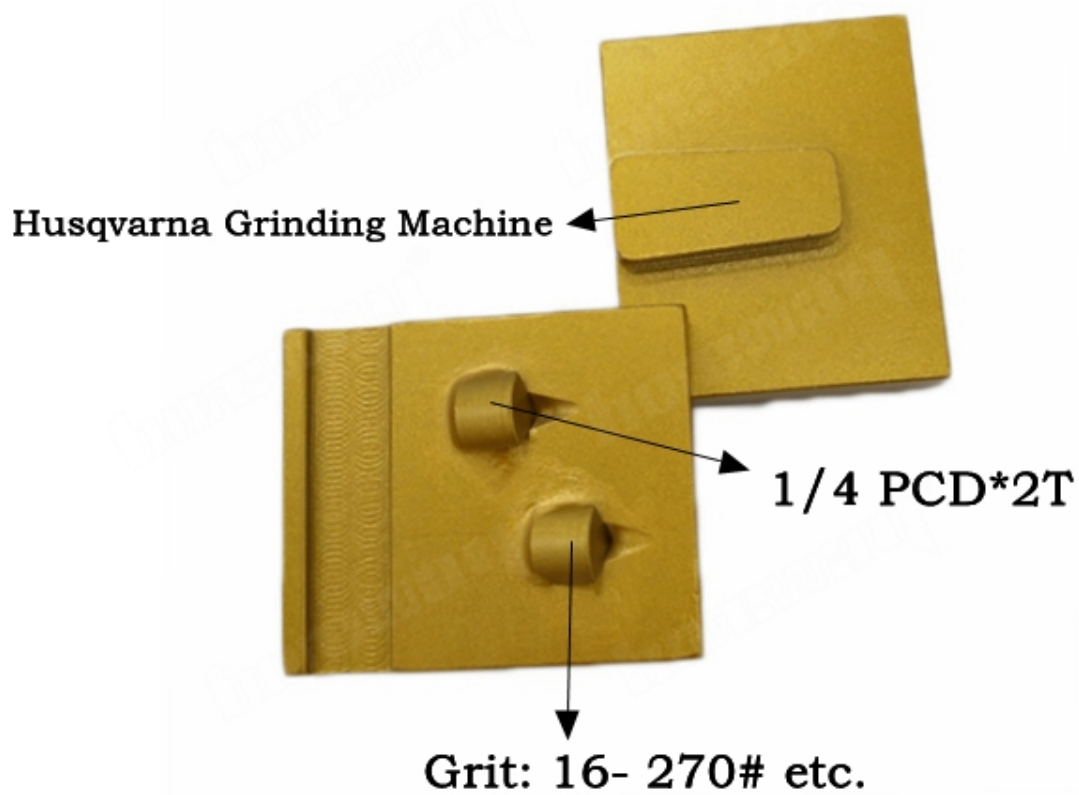


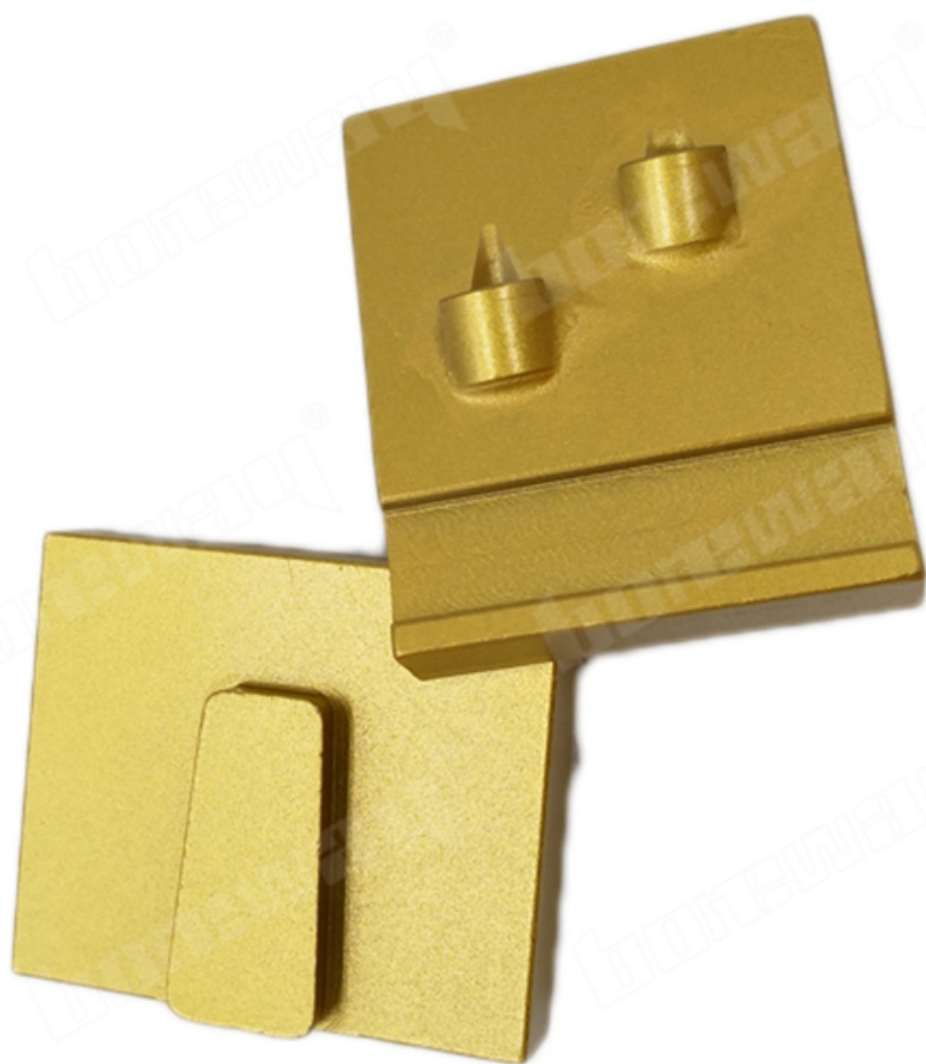
PCD Diamond Grinding Block is a high precision grinding tool used for grinding hard materials like carbide, ceramic, and diamond. It is made of a diamond-impregnated metal matrix and is used in a grinding machine to grind the workpiece to the required shape and size. The PCD Diamond Grinding Block is available in various sizes and grits to meet different grinding requirements.

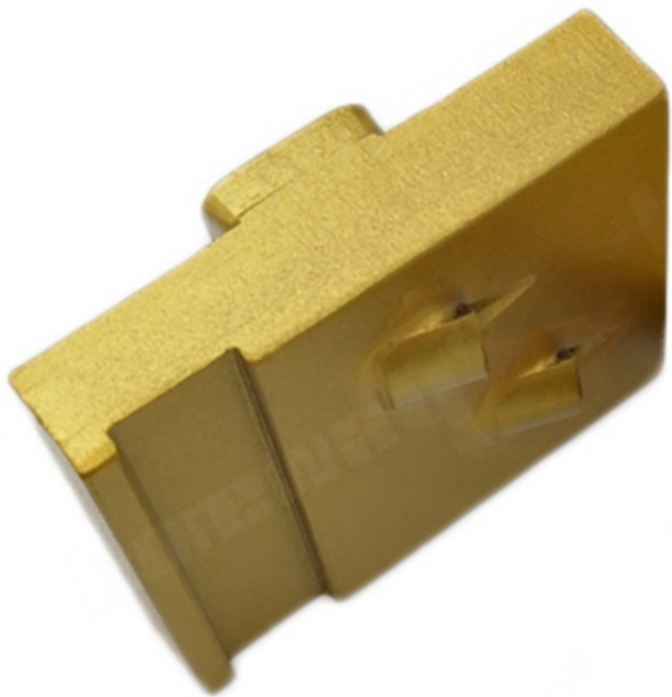
PCD Diamond Grinding Block:

PCD Diamond Grinding Block:

<PCD Diamond Grinding Block>









Husqvarna Redi Lock Blank Scanmaskin Blank

Connection:

- (1) Husqvarna Redi Lock Blank
- (2) Scanmaskin Blank

[Click here for more information about the connection between the blank and the scanner.](#)

Installation:

1.PCD blank is installed on the scanner by using the provided screws, washers, and nuts. The blank is inserted into the scanner and the screws are tightened. The scanner is then powered on and the blank is ready to use.

2.PCD blank is installed on the scanner (PCD, PCD) by using the provided screws, washers, and nuts. The blank is inserted into the scanner and the screws are tightened. The scanner is then powered on and the blank is ready to use.



PCD 鋼質 鋼質鋼 鋼質鋼鋼鋼 鋼質鋼 鋼 鋼質鋼鋼鋼, 鋼 鋼鋼, 鋼鋼鋼 鋼鋼 鋼鋼鋼 鋼鋼鋼

鋼鋼鋼鋼鋼 鋼鋼鋼鋼鋼:



Boreway Machinery Co.,Ltd
www.diamondtools.top
www.boreway.net

鋼鋼 **PCD** 鋼鋼鋼鋼 鋼鋼 鋼鋼鋼鋼



Boreway Machinery Co.,Ltd
www.diamondtools.top
www.boreway.net

鋼鋼 鋼鋼鋼鋼鋼 鋼鋼鋼鋼鋼 鋼鋼 鋼鋼鋼鋼

鋼鋼鋼鋼 鋼鋼鋼 鋼鋼鋼:

