

此零件为 3D 打印件，由 3D 打印技术制造而成。其设计为双菱形结构，具有三个连接孔。该零件适用于各种工业应用，如机械连接、传感器安装等。其尺寸为 44*19*13mm*2T，采用 M6 梯形螺纹孔设计。该零件具有良好的机械强度和耐腐蚀性，适用于恶劣的工作环境。

零件名称:

零件名称 **Rhombus** 零件数量 **3** 零件规格 **M6 Trapezoid** 零件尺寸 **44*19*13mm*2T**

Sizes:44*19*13mm*2T

Double Rhombus



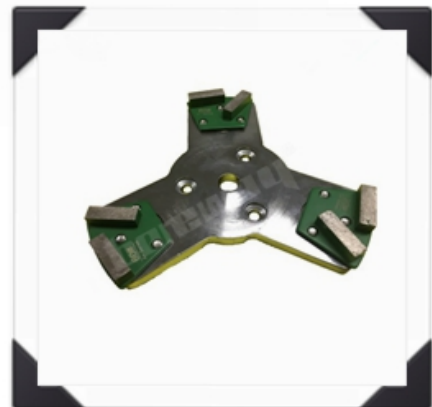
3 X (M6 or M8 or Bare Holes) Connection



Connection

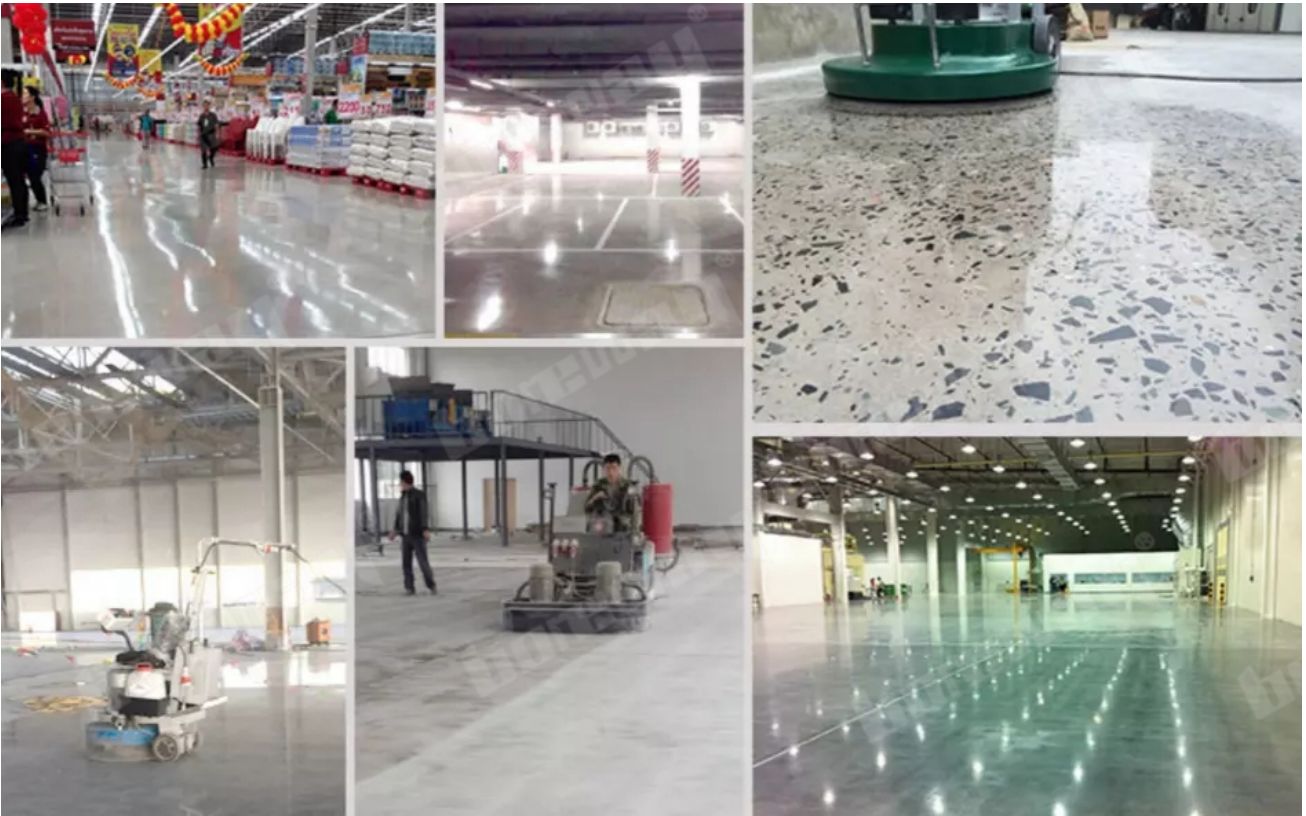
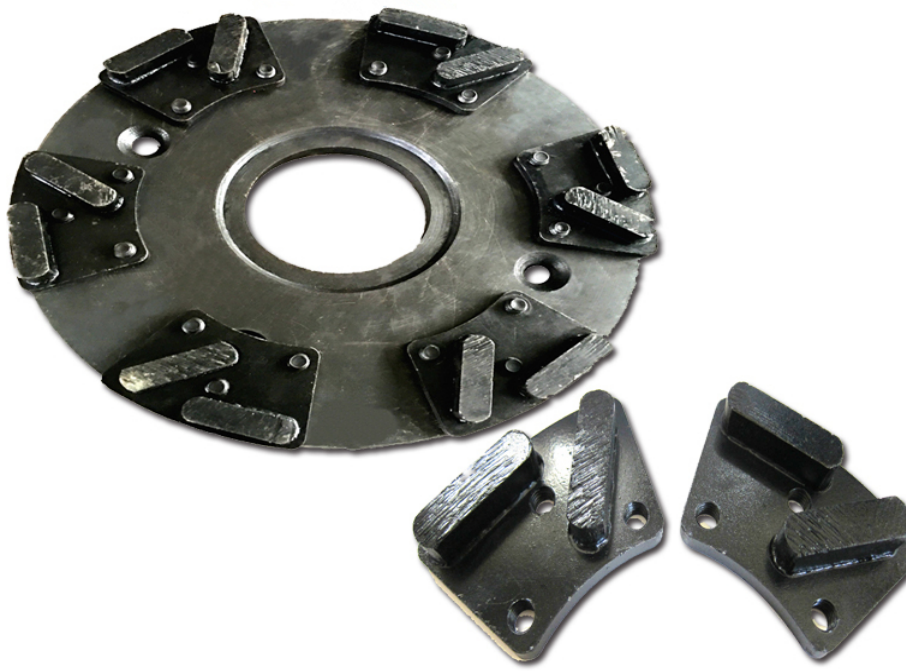
3 X M6/M8 Thread Holes

3 X Bare Holes



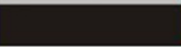




零件说明:

此零件为 3D 打印件，由 3D 打印技术制造而成。其设计为双菱形结构，具有三个连接孔。该零件适用于各种工业应用，如机械连接、传感器安装等。其尺寸为 44*19*13mm*2T，采用 M6 梯形螺纹孔设计。该零件具有良好的机械强度和耐腐蚀性，适用于恶劣的工作环境。



□□□:

CONCRETE HARDNESS	Xtreme Hard	Very Hard	Hard	Medium Hard	Soft	Very Soft
PSI	6500-9000	5000-7000	4000-5000	3000-4000	1500-3500	1000-2000
MPA	C50-C65	C40-C55	C30-C50	C20-C40	C15-C25	C10-C20
CODE	XHF	VHF	HF	MHF	SF	VSF
COLOUR						

000: 00000 0000, 000 0000 00 0000, 00000000 0000000 00 0000000 00000000 0000000 00000

0000:

- 0000 0000 00 000000 0000 00 000000 00 00 0000000 0000 00 00000 0000 00 00000 0000000000 0000 0000 00000000 0000 0000
- 000 00000000 000000 0000 00 000 000000000000 00000000 00 00000000 00 0000 00000 00 00000000 0000
- 0000 0000 00 000 00000 00, 000000 00 00000 0000 00 000 000000000 00000

0000000000:

000000000 000000 00 0000000000, 00 00000, 000000 0000 00000 00000

00000000 00000000:



Boreway Machinery Co. Ltd
www.diamondtools.top
www.boreway.net

3 000000000000 0000 00000



Boreway Machinery Co. Ltd
www.diamondtools.top
www.boreway.net

3 000000000000 0000 00000



Boreway Machinery Co. Ltd
www.diamondtools.top
www.boreway.net

2 000 000000000000 00000

000000 000000 0000:

