

1000000 = 1000000 1000000 = 1000000000000 100000 = 100000 10 100000 = 100000

Diameter		Thickness	Teeth	Segment Size			Hole	Max. RPM	Cutting Stone
Inch	mm	mm	pcs/set	L	W	H	mm	RPM	#
10"	250	18(2.2)	18	40	3.2	8/10	50/60	3850	Marble
12"	300	1.8(2.2)	22	40	3.2	10/12	50/60	3150	Marble
14"	350	2.2(2.4)	25	40	3.2	10/12	50/60	2750	Marble
16"	400	2.6(2.8)	29	40	3.6	10/12	50/60	2400	Marble
18"	450	2.8(3.0)	32	40	4.0(4.2)	10/12	50/60	2150	Marble
20"	500	2.8(3.0)	36	40	4.0(4.2)	10/12	50/60	1900	Marble
24"	600	36(3.2)	42	40	4.6(4.8)	10/12	50/60	1600	Marble
32"	800	4.2(4.5)	57	40	5.5(6.0)	10/12	50/60	1200	Marble
36"	900	5.0(5.5)	64	40	7.5(8.0)	10/12	60/80	1050	Marble
36"	900	5.0(5.5)	64	24	7.5(8.0)	10/13	60/80	1050	Marble
40"	1000	5.0(5.5)	70	24	7.5(8.0)	10/13	80/100	950	Marble
48"	1200	5.5(6.0)	80	24	7.5(8.0)	10/13	80/100	950	Marble
56"	1400	6.0(6.5)	92	24	8.5(9.2)	10/13	80/100	700	Marble
64"	1600	6.5(7.2)	108	24	9.2(9.5)	10/13	80/100	600	Marble
72"	1800	7.2(8.0)	120 I	24	10.0	10/13	80/100	550	Marble
80"	2000	8.0(9.0)	128	24	11.0	10/13	100/120	500	Marble
86"	2200	8.0(9.0)	132	24	11.0	10/13	100/120	450	Marble
100"	2500	9.0(10.0)	140	24	12.5	13/15	100/120	400	Marble
120"	3000	9.0(10.0)	160	24	12.5	13/15	100/120	350	Marble
140"	3500	9.0(10.0)	180	24	13.0	13/15	100/120	300	Marble

1000000: 1000 10 1000 10 1000000 1000000 1000 10000 10000 10000 10000 10000 10000, 10
 1000000 10000 10 1000000 10000 10000 1000000, 10000 10000 1000000 1000000 1000000 10!
 1000-1000000 10 1000-1000000 1000000 10000000000000 10 1000000:

Blade Set	Blade Diameter	Thickness	Segment Size	Cutting Stone
#	#	mm	LxWxH	#
Multi Size	2200-600 Multi	4.5	24x6.4/5.6x13H(15H)	Granite
Multi Size	2200-600 Multi	5.0	24x7.0/6.2x13H(15H)	Granite
Multi Size	2200-600 Multi	5.5	24x7.4/6.6x13H(15H)	Granite
Multi Size	2200-600 Multi	6.5	24x8.4/7.6x13H(15H)	Granite
Multi Size	2500-800 Multi	5.5	24x7.4/6.6x13H(15H)	Granite
Multi Size	2500-800 Multi	6.5	24x8.4/7.6x13H(15H)	Granite
Multi Size	2500-800 Multi	7.2	24x9.2/8.4x13H(15H)	Granite
Multi Size	1600-960 Multi	6.5	24x8.4/7.6x13H(15H)	Granite
Multi Size	1600-960 Multi	7.2	24x9.2/8.4x13H(15H)	Granite
Single Size	40"/1000mm	4.5-5.0	24x7.0/6.2x13H(15H)	Granite
Single Size	48"/1200mm	5.0-5.5	24x7.5/6.5x13H(15H)	Granite
Single Size	64"/1600mm	6.5-7.2	24x9.2/8.4x13H(15H)	Granite
Single Size	48"/1200mm	4.0	24x5.5x8H(10H)	Marble
Single Size	48"/1200mm	4.5	24x6.0x8H(10H)	Marble
Single Size	48"/1200mm	5.0	24x7.5x8H(10H)	Marble
Single Size	48"/1200mm	5.5	24x8.0x8H(10H)	Marble
Single Size	64"/1600mm	6.5-7.2	24x9.2x10H(8H)	Marble
Single Size	64"/1600mm	6.5-7.2	24x9.5x13H(10H)	Marble

Support Sample Processing Customization

Style and Specifications



Contact Salesman

Due to the large number of product specifications and styles, in order to avoid conflicts, please contact the salesman before placing the order.

1

Provide Samples

The manufacturer supports the sample processing and customization, and the buyer provides the sample first to communicate the production requirements.



2



Mail Samples

According to the buyer's demand for proofing, the manufacturer needs the buyer to pay the proofing fee first, and the sample fee will be returned after the order is concluded.

3

Generate Order

The buyer receives the sample. If satisfied, place an order for batch production. After confirming the receipt, contact the salesman to return the proofing cost.



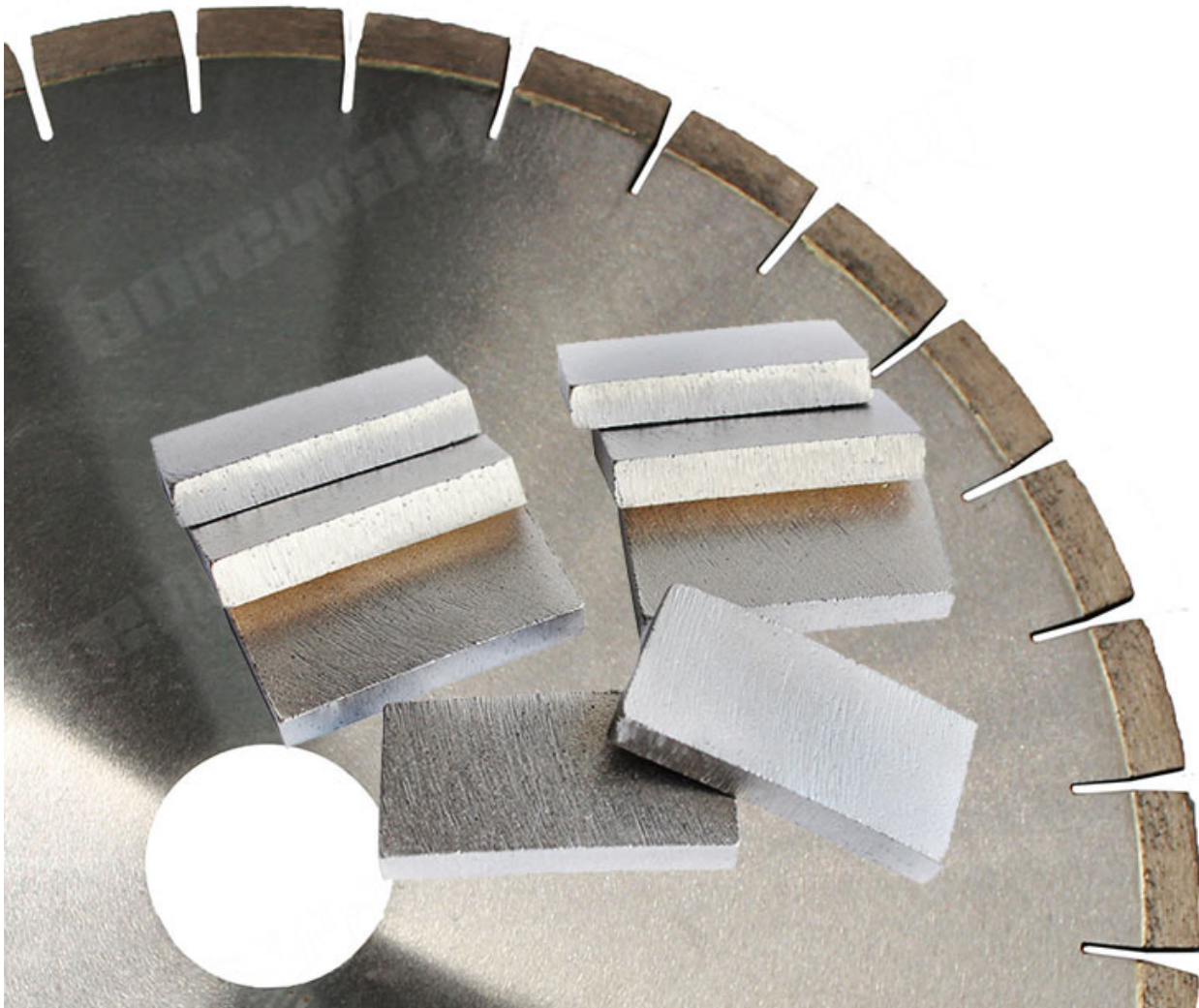
4

本公司 專業生產、銷售各種 鑽孔 鑽頭 280-320 各種 鑽頭 鑽頭 鑽頭 鑽頭, 歡迎 各界 人士 垂詢 洽談 業務 洽談 洽談 洽談!

歡迎 各界 人士 垂詢 洽談 業務 洽談 洽談 洽談!

歡迎 各界 人士 垂詢 洽談 業務 洽談 洽談 洽談!

boreway®



歡迎 各界 人士 垂詢 洽談 業務 洽談 洽談 洽談!

Our factory uses original high grade diamond particles, which are selected from the waste segment of the diamond industry. The particles are of high quality and are used in our blades.

Our factory

Our factory uses original high grade diamond particles, which are selected from the waste segment of the diamond industry. The particles are of high quality and are used in our blades. 105 or 120 mesh (microns) size of the particles is used in our blades.

Our factory uses original high grade diamond particles, which are selected from the waste segment of the diamond industry. The particles are of high quality and are used in our blades. - High quality, durable, long life.

Our factory

Our factory uses original high grade diamond particles, which are selected from the waste segment of the diamond industry. The particles are of high quality and are used in our blades. 90 or 105 mesh (microns) size of the particles is used in our blades.

Our factory uses original high grade diamond particles, which are selected from the waste segment of the diamond industry. The particles are of high quality and are used in our blades. - High quality, durable, long life.

Our factory use original high grade diamond



pk

Other factory mix second diamond selected from waste segment

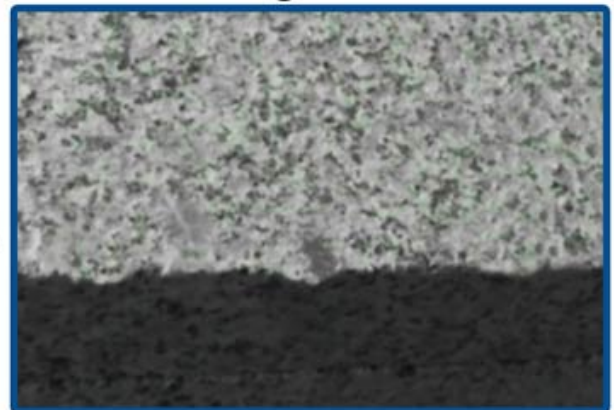


Our blade cutting effect



pk

Other supplier blade cutting effect



1. 900-3500mm 2. 3. 4. 5. 6. 7. 8. 9. 10. 11. 12. 13. 14. 15. 16. 17. 18. 19. 20. 21. 22. 23. 24. 25. 26. 27. 28. 29. 30. 31. 32. 33. 34. 35. 36. 37. 38. 39. 40. 41. 42. 43. 44. 45. 46. 47. 48. 49. 50. 51. 52. 53. 54. 55. 56. 57. 58. 59. 60. 61. 62. 63. 64. 65. 66. 67. 68. 69. 70. 71. 72. 73. 74. 75. 76. 77. 78. 79. 80. 81. 82. 83. 84. 85. 86. 87. 88. 89. 90. 91. 92. 93. 94. 95. 96. 97. 98. 99. 100.



900-3500mm

1. 900mm 2. 3500mm, 3. 4. 5. 6. 7. 8. 9. 10. 11. 12. 13. 14. 15. 16. 17. 18. 19. 20. 21. 22. 23. 24. 25. 26. 27. 28. 29. 30. 31. 32. 33. 34. 35. 36. 37. 38. 39. 40. 41. 42. 43. 44. 45. 46. 47. 48. 49. 50. 51. 52. 53. 54. 55. 56. 57. 58. 59. 60. 61. 62. 63. 64. 65. 66. 67. 68. 69. 70. 71. 72. 73. 74. 75. 76. 77. 78. 79. 80. 81. 82. 83. 84. 85. 86. 87. 88. 89. 90. 91. 92. 93. 94. 95. 96. 97. 98. 99. 100.



1. 900mm 2. 3500mm, 3. 4. 5. 6. 7. 8. 9. 10. 11. 12. 13. 14. 15. 16. 17. 18. 19. 20. 21. 22. 23. 24. 25. 26. 27. 28. 29. 30. 31. 32. 33. 34. 35. 36. 37. 38. 39. 40. 41. 42. 43. 44. 45. 46. 47. 48. 49. 50. 51. 52. 53. 54. 55. 56. 57. 58. 59. 60. 61. 62. 63. 64. 65. 66. 67. 68. 69. 70. 71. 72. 73. 74. 75. 76. 77. 78. 79. 80. 81. 82. 83. 84. 85. 86. 87. 88. 89. 90. 91. 92. 93. 94. 95. 96. 97. 98. 99. 100.

2. 如何選擇合適的感應加熱機和感應圈，以達到最佳的感應加熱效果

如何選擇合適的感應加熱機和感應圈，以達到最佳的感應加熱效果，這取決於工件的形狀、尺寸、材料、厚度、位置、以及工件的加熱深度和溫度要求。在選擇感應加熱機和感應圈時，應考慮以下因素：

如何選擇合適的感應圈：

如何選擇合適的感應圈：

如何選擇合適的感應圈，應考慮以下因素：1. 感應圈的形狀和尺寸應與工件的形狀和尺寸相匹配。2. 感應圈的材質應選擇高導電、高耐用的材料。3. 感應圈的匝數和線徑應根據工件的加熱深度和溫度要求進行選擇。

如何選擇合適的感應圈，應考慮以下因素：4. 感應圈的安裝位置應盡量靠近工件，以減少能量損耗。5. 感應圈的安裝應確保與工件的良好接觸。

如何選擇合適的感應圈，應考慮以下因素：6. 感應圈的設計應考慮到工件的加熱均勻性和效率。7. 感應圈的設計應考慮到工件的變形和損傷問題。8. 感應圈的設計應考慮到工件的加熱深度和溫度要求。



Brazing Machine Welding Rack



Three Phase 380V 30kW High Frequency Induction Welding Machine



Welding segment effect

如何選擇合適的感應圈：



Boreway Machinery Co., Ltd
www.diamondtools.top
www.boreway.net



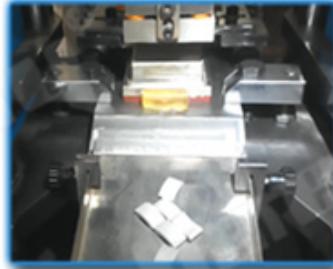
Boreway Machinery Co., Ltd
www.diamondtools.top
www.boreway.net

00000 0000 0000:

0000000000 00 000 000000 000000 00000000 00000000



● Cold Press Mschine



● Fill The Mold



● The Product Polishing



● Hot Press Machinery



● Remove The Mold



● Packing







□□□□□□:

□□□□□□:

1. □□□□□□ □□ □□□□□□ □□□□□□ □□□□ □□□□□□ □□□□□□
2. □□□□ □□□□ / □□□□ □□ □□□ □□□ □□□□, □□□□ □□□□□□ / □□□□□□ □□□□□□ □□
3. □□ □□ □□ 45 kg, □□ □□□□ □□ □□□□□□ □□□□□□□□□□□□□□□□ (□□□□□□□□ □□□□ □□ □□□□ kg)
4. □□ □□□□□□ □□□□□□□□ □□□□ □□□□ □□□□, □□ □□ □□□□□□ □□ □□□□□□ □□□□□□□□ □□□□ □□□□ □□□□





No.605 Huahui 街, Shuitou 362342 Quanzhou, 福建省, 中国



电话: (+86) 595-86990206 /  电话: (+86) 595-86990220



手机 / **WhatsApp** / 电话: (+ 86) 18650679939



邮箱: **boreway@boreway.com**



联系人 姓名