

Vertical line

Horizontal line

Our factory use original high grade diamond



pk

Other factory mix second diamond selected from waste segment

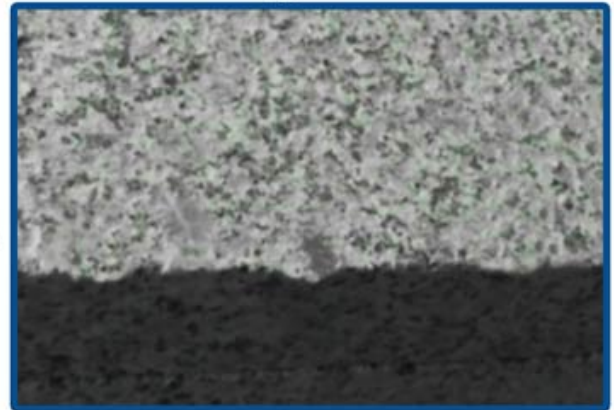


Our blade cutting effect



pk

Other supplier blade cutting effect

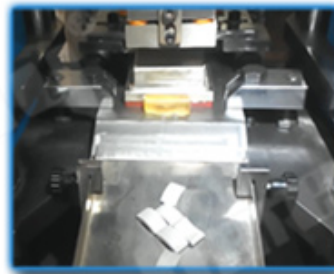


Comparison of diamond quality and cutting performance:

1. High-grade diamond particles are larger and more uniform in size, resulting in a smoother and more efficient cutting process. Low-grade diamond particles are smaller and more irregular, leading to a rougher and less efficient cutting process.
2. High-grade diamond particles are more resistant to wear and tear, maintaining their sharp edges for a longer period. Low-grade diamond particles are more prone to wear and tear, leading to a shorter lifespan and more frequent replacement.
3. High-grade diamond particles are more expensive, but their superior performance and longer lifespan make them a more cost-effective choice in the long run. Low-grade diamond particles are cheaper, but their inferior performance and shorter lifespan make them a less cost-effective choice.
4. High-grade diamond particles are more difficult to find and mine, while low-grade diamond particles are more abundant and easier to mine.



● Cold Press Mschine



● Fill The Mold



● The Product Polishing



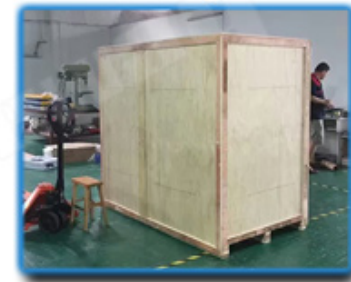
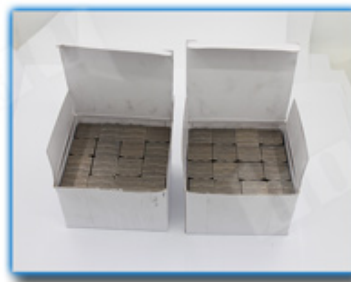
● Hot Press Machinery



● Remove The Mold



● Packing



□□□:

6 □□□ □□□□□□□□ □□□□ □□□□□ □□□□□ □□□□□

1. □□□□□□□□ 65 □□□□□□ □□□□□ □□□□ □□□□□□□□ □□ □□ □□, □□□□□ □□□□□ □□□□□□□□□□□ □□□□□□, □□□□ □□□□□, □□□□□ □□ □□□□□ □□□□□□□ □□□□□ □□ □□□□ □□□□□ □□;
2. □□□ □□□ □□□□ □□□□□□□□ □□□□ □□□□ □□ □□□□ □□ □□□ □□ □□ □□ □□ □□ □□ □□ □□ □□□□□□-□□□□□□ □□□□□ □□ □□□ □□□□□□ □□;
3. □□□□ □□□□ □□ □□□ □□ □□ □□□□□□□□ □□ □□□□ □□□□ □□□ □□□□□ □□ □□□□ □□□□ □□□□ □□, □□□□ □□ □□□ □□, □□ □□□□ □□□□ □□□□ □□, □□ □□□□□ □□□□ □□ □□□ □□;
4. □□□□□□□□□□ □□□□ □□□□, □□□□□□□□□□□□□□□ □□□□□ □□□ □□ □□□□□□□□ □□ □□□ □□□, □□ □□□□□□□□ □□□□□□□□ □□ □□ □□□□ □□□□ □□□□ □□□□
5. □□□□□□□□ □□□□ □□□□ □□ □□□□ □□□□ □□ □□□□□ □□, □□□□□ □□□□ □□□□ □□□□ □□□□ □□, □□□□□□ □□ □□□□ □□□□□ □□□□□, □□ □□□□□ □□□□□ □□ □□□□□ □□ □□□□□□□ □□□□ □□□□□ □□□□□ □□□□□□□□

□□□ □□ □□ □□□

□□□□□□□ = □□□□□□□□ □□□□□□□□ = □□□□□□□□□□□□□ □□□□□ = □□□□□ □□ □□□□□ = □□□□□

Support Sample Processing Customization

Style and Specifications



Contact Salesman

Due to the large number of product specifications and styles, in order to avoid conflicts, please contact the salesman before placing the order.

1

Provide Samples

The manufacturer supports the sample processing and customization, and the buyer provides the sample first to communicate the production requirements.



2



Mail Samples

According to the buyer's demand for proofing, the manufacturer needs the buyer to pay the proofing fee first, and the sample fee will be returned after the order is concluded.

3

Generate Order

The buyer receives the sample. If satisfied, place an order for batch production. After confirming the receipt, contact the salesman to return the proofing cost.



4

□□□□□□□□□□:

6 □□□ □□□□□□□□ □□□□□ □□□□□ □□□□□ □□□□□ □□□□□ □□□□□□□□□□, □□□□□, □□□□□ □□□□□□, □□□□□ □□□□□□□□□□□□□□ □□□□□ □□□□□ □□□□□ □□□□□ □□□ □□ □□ □□□□□□□□ □□□

□□□ □□□□□□□□, □□□□□ □□ □□□ □□□□□!



Porcelain tile



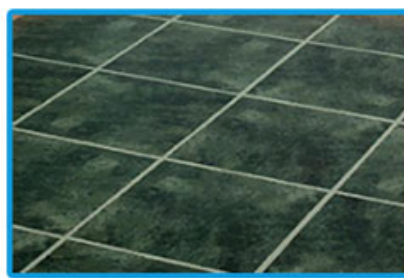
Ceramic



Engineered stone



Non Slip Tile



Floor Tile



Ceramic Tile



Concrete



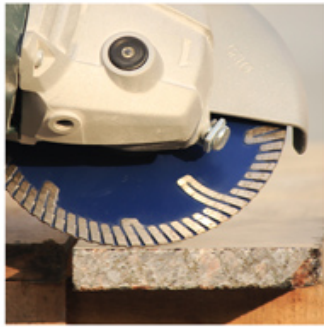
Granite



Marble

□□□□ □□□:

6 □□□ □□□□□□□□ □□□□ □□□□□ □□□□ □□□□ □□ □□□□ □□□ □□ □□□□□, □□□□□□□ □□□□, □□□□□ □□□□, □□□ □□□□



□□□□□□ □□□□□□:



Boreway Machinery Co.,Ltd
www.diamondtools.top
www.boreway.net

5 □□□□□□□□ □□□□□□



Boreway Machinery Co.,Ltd
www.diamondtools.top
www.boreway.net

□□□□□□ □□□□□□□□□□□□□□□□□□□□□□□□□□□□

□□□□□ □□□□ □□□:





□□□□□□:

□□□□□□:

1. □□□□□ □□ □□□□□□ □□□□□□ □□□ □□□□□□ □□□□□□
2. □□□□□ □□□ / □□□□□ □□□ □□□ □□□ □□□, □□□□□ □□□□□□ / □□□□□□ □□□□□□□□ □□
3. □□ □□ □□ 45 kg, □□ □□□ □□ □□□□□□ □□□□□□□□□□ □□□□□□ (□□□□□□□ □□□□□ □□ □□□□ kg)
4. □□ □□□□□□ □□□□□□□ □□□ □□□□□ □□□, □□ □□ □□□□□ □□ □□□□□□ □□□ □□□□□□ □□□□□ □□□



📦🚚🚢🚛🚆🚚📦:

1. 📦 📦📦 📦📦📦: 📦 📦📦📦📦 📦📦 📦 📦 📦📦📦 📦 📦📦 📦 📦📦 📦
2. 📦 📦📦 📦 📦📦📦: 📦 📦📦 📦📦📦 📦 📦📦 📦📦 📦📦📦📦 📦📦
3. OEM 📦📦📦📦📦: 📦 📦📦 📦📦📦 📦 📦📦📦 📦 📦📦📦 📦📦📦📦 📦 📦📦 📦📦
4. 📦📦📦 📦📦📦📦: 📦 📦 📦📦 📦📦📦📦 📦📦📦📦 📦📦📦📦 📦📦 📦📦📦 📦📦📦 📦📦📦📦📦 📦📦
5. 📦📦📦 📦📦📦: 📦 📦📦 📦📦📦📦 📦 📦📦 📦📦📦 📦 📦📦📦📦📦📦 📦 📦📦📦📦 📦 📦📦 📦📦📦 📦 📦📦 📦📦📦 📦

📦📦📦📦📦 📦📦📦📦:

1. 📦📦 📦 📦📦 📦📦📦📦 📦 📦📦📦 📦📦📦 📦📦📦 📦📦, 📦 📦 📦📦 📦📦📦📦📦 📦📦 📦📦📦 📦📦? 📦 📦 📦📦 📦 📦📦📦 📦 📦📦 📦📦📦📦 📦 📦📦 📦📦, 📦 📦📦 📦📦📦📦📦 📦 📦📦 📦 📦📦📦📦 📦📦📦, 📦📦📦📦 📦 📦 📦📦 📦📦📦 📦📦 📦📦📦📦📦 📦 📦📦 📦📦📦 📦📦📦📦 📦 📦📦📦 📦📦📦📦 📦📦📦📦 📦📦📦 📦📦📦📦 📦📦📦 📦 8 📦 📦📦📦 📦📦📦📦 📦 📦📦 📦📦📦📦 📦📦📦📦 📦📦📦📦
2. 📦 📦📦📦 📦📦📦 📦 📦📦 📦📦📦📦 📦📦📦📦 📦 📦📦📦 📦📦? 📦 📦: 📦📦📦📦 📦📦📦📦 📦📦📦 📦📦📦 📦📦📦 📦📦📦📦 📦 📦📦📦📦 📦 📦📦📦 📦📦 📦, 📦 📦📦📦 📦📦 📦📦📦📦 📦📦📦📦📦 📦📦📦📦📦 📦 📦📦📦 📦📦📦📦 📦📦📦 📦📦📦 📦📦📦📦 📦📦📦📦, 📦 📦📦📦 📦📦📦📦 📦📦📦📦 📦 📦📦📦 📦📦📦📦 📦📦📦📦 📦 📦📦📦 📦📦📦📦 📦📦📦📦 📦 📦📦📦📦 📦📦📦📦 📦 📦📦📦📦 📦 📦📦📦 📦📦📦📦

本公司提供各種機械設備，歡迎各界人士垂詢。

3. 如何選擇合適的機械設備？


選擇機械設備時，應考慮設備的質量、性能、價格及售後服務等因素。建議選擇信譽良好、技術先進的廠家，並根據實際需求選擇合適的型號。同時，應注意設備的維護和保養，以確保其長期穩定運行。



歡迎各界人士垂詢： boreway@boreway.com

本公司提供各種機械設備，歡迎各界人士垂詢。地址：福建省南安市華輝路605號，郵政編碼362342。

歡迎各界人士垂詢： boreway@boreway.com

Fujian Nanan *boreway* Machinery Co.,Ltd.

 No.605 Huahui 路, Shuitou 鎮 362342 Quanzhou, 福建省南安市, 中國

 電話：(+86) 595-86990206 /  電話：(+86) 595-86990220

 手機 / **WhatsApp** / 電話：(+ 86) 18650679939

 郵箱： boreway@boreway.com

 歡迎各界人士垂詢