

Boreway 9inch 230mm Sharp Cut Turbo Mesh Type Popular Blade for Granite Manufacturer



1. High quality diamond

2. High quality diamond

3. High quality diamond

4. High quality diamond 9. High quality diamond

**Our factory** use original high grade diamond



pk

**Other factory** mix second diamond selected from waste segment

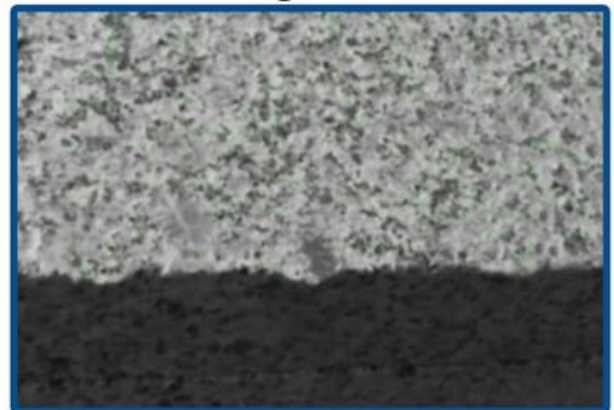


**Our blade** cutting effect



pk

**Other supplier** blade cutting effect





□□□

□□□□□□ 9□□□□□□□□□□□□□□

□□	□□	□□	□□	□□	4	105	20	1.4	10
4.5	115	22.23	1.4	10					
5	125	22.23	1.4	10					
9	230	22.23	2.0	10					

□□□□□□□□□□□□□□□□□□

□□=□□□□=□□□□□□□=□□□□□= OEM

□□□□□□□□

1. □□□□□□□□□□□□□□□□□□

□□□□□□□□□□□□□□□□

□□□□□□□□□□□□□□□□□□

2. □□□□□□□□□□□□

3. □□□□□□□□□□□□□□□□□□□□□□□□□□□□□□□□□□

4. □□□□□□□□□

# Support Sample Processing Customization

## Style and Specifications



### Contact Salesman

Due to the large number of product specifications and styles, in order to avoid conflicts, please contact the salesman before placing the order.

1

### Provide Samples

The manufacturer supports the sample processing and customization, and the buyer provides the sample first to communicate the production requirements.



2



### Mail Samples

According to the buyer's demand for proofing, the manufacturer needs the buyer to pay the proofing fee first, and the sample fee will be returned after the order is concluded.

3

### Generate Order

The buyer receives the sample. If satisfied, place an order for batch production. After confirming the receipt, contact the salesman to return the proofing cost.



4



9□□□□□□□□□□□□□□□□ □□□□□□□□□□□□□□□□



Wall Cutting



Concrete With Rebar Cutting



Road Cutting



Hard Stone Cutting



Hard Granite Cutting



Ceramic Porcelain Cutting



Marble Cutting

□□□□□□□□



Porcelain tile



Ceramic



Engineered stone

□□□□

□□□□



### 9. 磨石台面的边缘处理

□□□□



5. 磨石台面的边缘处理

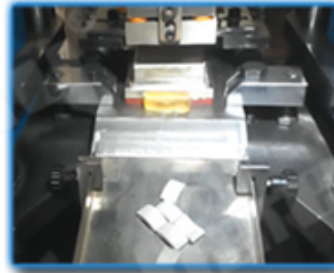


□□□□□□

□□□□



● Cold Press Mschine



● Fill The Mold



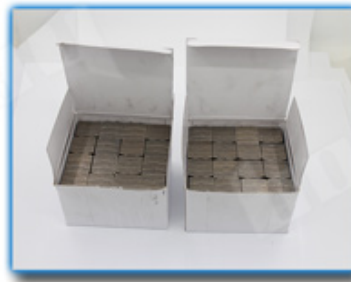
● The Product Polishing



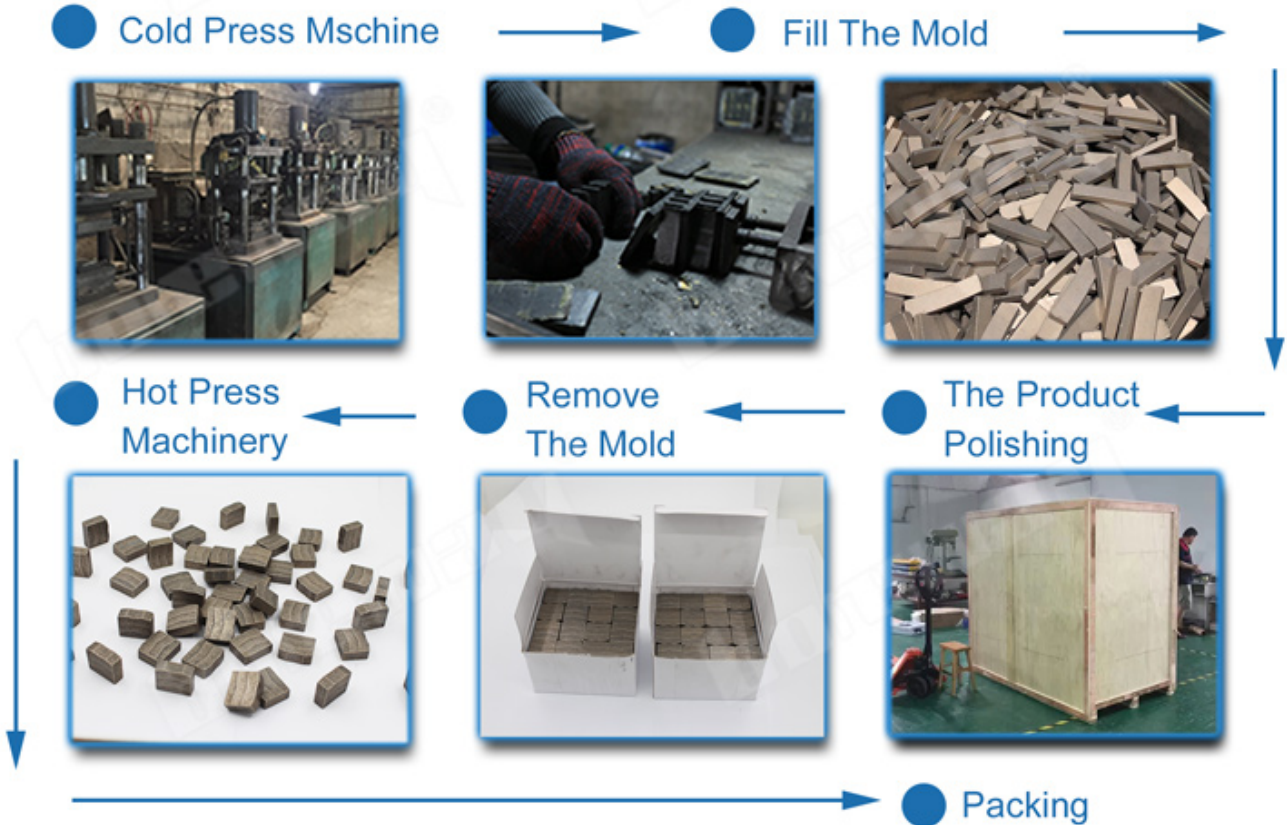
● Remove The Mold



● Hot Press Machinery



● Packing







□□□□□□

PS□

1.□□□□□

2.□□□/□□□□□□□□□□□□□□/□□

3.□□45kg□□□□□□□□□□□

4.□□□□□□□□□□□□□□






XX

XXXXXX

# Fujian Nanan *boreway*<sup>®</sup> Machinery Co.,Ltd.

 XXXXXXXXXXXXXXXXXXXX605X362342

 XXXX +86X595-86990206 /  XXXX +86X595-86990220

 XXX/ **WhatsApp** /XXXX + 86X 18650679939

 XXXXXX **boreway@boreway.com**

 XXXX