

5

□□□



5

5
 □□5

□□□

□□5

□□	8□□
□□□	2.4□□
□□□	125□□
□□	□□
□□	BW-DSB-D125-112
□□	□□□□□□□□□□
□□□□	5□□□□□□□□□□
□□	□□□□□□□□□□

□□□□□□□□□□□□□□□□□□□□

□□□□□

5



Ø 105x2.2x8x20mm

5 Inch Concave Diamond Cutting Blade

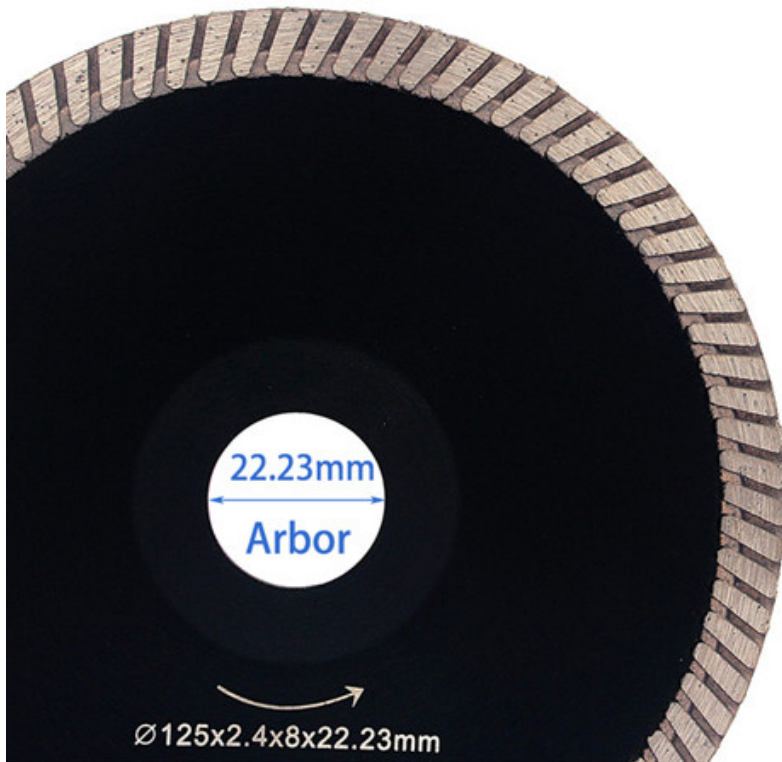


Segment Thickness: 2.4mm

Ø 125x2.4x8x22.23mm



Packaged in carton



Outer Diameter: 125mm

Segment Height: 8mm

Segment Thickness: 2.4mm



Saucer shaped is easy for curved cutting and good for sinkhole application.

□□□□

5. □□□□□□□□ □□□□□□□□□□□□□□



□□□

- 1. □□□□
- 2. □□□□□□□□
- 3. □□□□□□□□□□□□□□

□□□

- 1. □□□□□□□□
- 2. □□□□□□□□□□
- 3. □□□□□□□□□□□□

□□□□



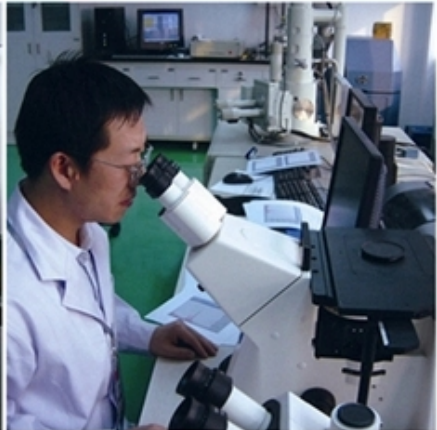
Boreway Machinery Co., Ltd.
www.fordiamondtools.com
www.diamondtools.top

12



Boreway Machinery Co., Ltd.
www.fordiamondtools.com
www.diamondtools.top

300mm



- 1.
- 2.
3. OEM

