

17 17 Klindex

17 Klindex

- 1
- 2
- 3
- 4
- 6



- 1
- 2
- 3. 30PCS 45PCS
- 4
- 5. 5
- 2. 3PCS 4PCS 5PCS 6PCS 9PCS 12PCS
- 6
- 5 125MM 150MM 200MM 250MM 300MM 350MM 400M 450MM

□□□

□□□□ **17**□□□□□□□□□□ **Klindex**□□□□□□□□□□□□□□

□□	□□□□	□□	□□□	□□
17□□	6□	□□	45□	□□□+□□

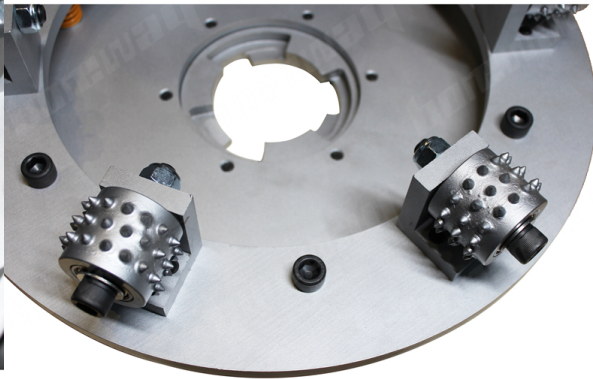
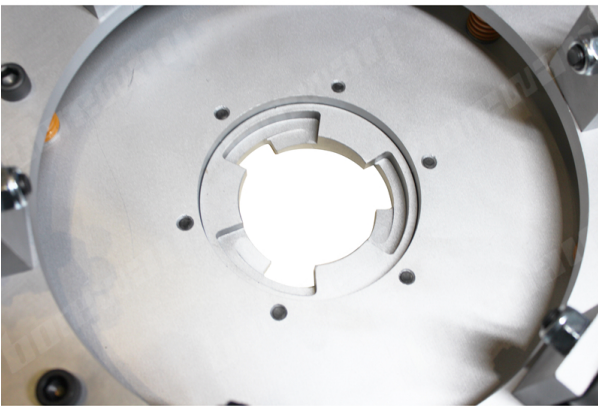
□□□□□□□□□□□□□□□□
□□□□□□□□□□□□□□□□

□□□□□

17□□□□□□□□□□ **Klindex**□□□□□□□□□□□□□□

boreway[®]

boreway[®]



boreway[®]

boreway[®]



□□□□



□□□□

17□□□□□□□□□□**Klindex**□□□□□□□□□□□□ □□□□□□□□□□□□□□□□

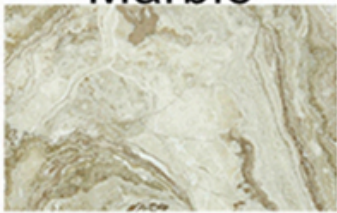
17□□□□□□□□□□**Klindex**□□□□□□□□□□□□ □□□□□□□□□□□□



boneway®

Applicable materials

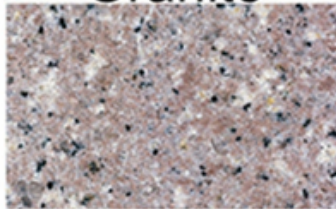
Marble



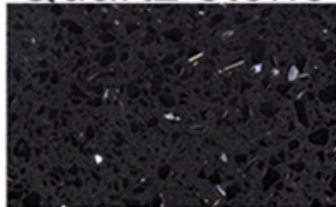
Sandstone



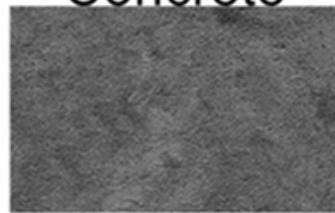
Granite



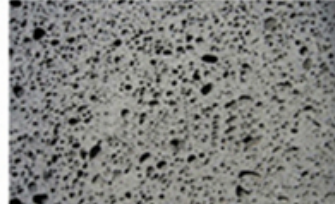
Quartz stone



Concrete



Volcanic rocks



3. 地址

福建省南安市水头镇水头村水头街100号 邮编 362342

地址

Fujian Nanan **boreway** Machinery Co.,Ltd.



福建省南安市水头镇水头街100号 邮编 605 362342



电话 +86 595-86990206 /  电话 +86 595-86990220



WhatsApp / 电话 + 86 18650679939



邮箱 boreway@boreway.com



联系人